



JERRICO ASSOCIATES

SUITE 27
77 MARK DRIVE
SAN RAFAEL, CA 94903

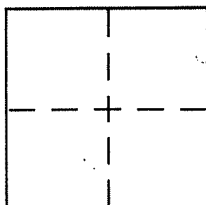
7492

CORNER RECORD

Document Number 1-082-23

City of Fairfax County of Marin, California

Brief Legal Description Lot 6 "Resubdivision of Lot 4,5,6 and 7 Bothin Park"
Blk 2 Licensed Surveys Pg 200



CORNER TYPE

Government Corner Control
Meander Property
Rancho Other
Date of Survey July 2, 2003

COORDINATES (Optional)

N. _____
E. _____
Zone _____ NAD27 NAD83
NAD83 Epoch _____
Elev. _____
Vert. Datum: NGVD29 NAVD88
Meas. Units: Metric Imperial

Corner - Left as found Found and tagged Established Reestablished Rebuilt

Identification and type of corner found: Evidence used to identify or procedure used to establish or reestablish the corner:
Previously found 1/4" rebars in centerline of Bothin Rd.
Together with survey control recovered from prev.
survey.

A description of the physical condition of the monument as found and as set or reset: _____

(A) Found prev'sly set rebar and cap LS 3887.

(B) Set rebar and cap LS 3887

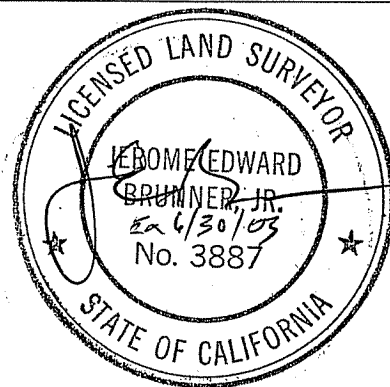
(C) Set nail and tag LS 3887

(D) Set nail and tag in curb.

SURVEYOR'S STATEMENT

This Corner Record was prepared by me or under my direction in conformance with
the Land Surveyor's Act on July 2, 2003

Signed [Signature] P.L.S or R.C.E. No. LS 3887



COUNTY SURVEYOR'S STATEMENT

This Corner Record was received July 11, 2003

and examined and filed JULY 22, 2003

Signed [Signature] P.L.S or R.C.E. No. 30212

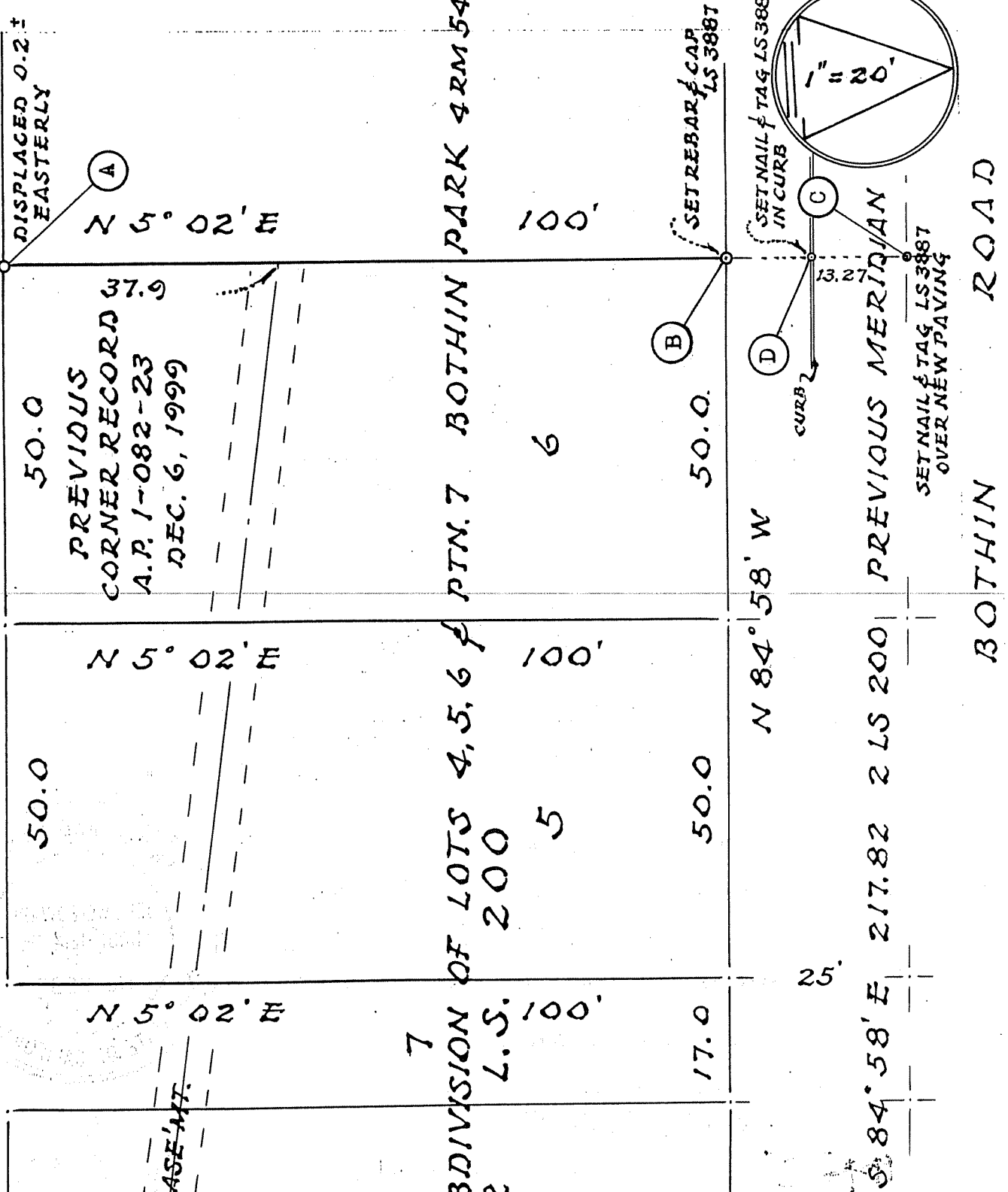
Title DEPUTY

County Surveyor's Comment _____



FD. PREVIOUSLY SET REBAR
CAP LS 3887, SHOWN IN
PREV. COR. RECORD.

N 84° 58' W



50.0
PREVIOUS
CORNER RECORD 37.9
A.P. 1-082-23
DEC. 6, 1999

N 5° 02' E

N 5° 02' E

N 5° 02' E

RESUBDIVISION OF LOTS 4, 5, 6 & PTN. 7 BOTHIN PARK 4RM 54

7
L.S. 100'

100'

100'

100'

4 SURVEY
WESTERLY LINE
A.P. 1-082-23
FAIRFAX, CA.

JULY 2003

JERRICO ASSOCIATES 77 MARK DR, SAN RAFAEL, CA.

SEE S-7376

S-7492