



JERRICO ASSOCIATES
 SUITE 27
 77 MARK DRIVE
 SAN RAFAEL, CA 94903

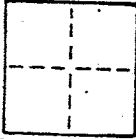
A.R # 1-063-37

6821

CORNER RECORD

1/3

COUNTY OF Marin T. _____ R. _____ MERIDIAN _____ CALIFORNIA
 CORNER TYPE: GOV'T. CORNER MEANDER RANCHO CONTROL OTHER
 CORNER IDENTIFICATION — DATE OF VISIT _____ 19____



CORNER — LEFT AS FOUND FOUND AND TAGGED REESTABLISHED OBLITERATED CORNER REBUILT

PHYSICAL DESCRIPTION OF CORNER FOUND; EVIDENCE AND METHOD USED TO IDENTIFY OR REESTABLISH

Found various survey points as marked on sketch.

Meridian based on southerly line of Block 'H', Amended map of Fairfax Manor as fenced along old division line, per 5 R.M. 4

PHYSICAL DESCRIPTION OF MONUMENTS REBUILT OR PERPETUATED

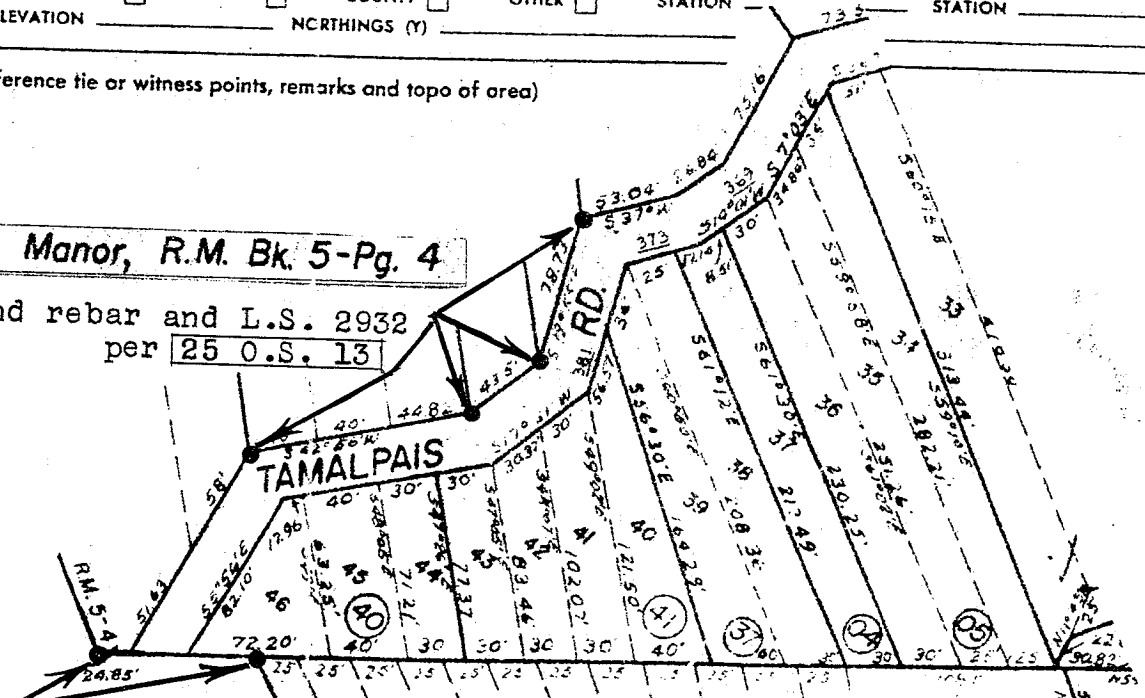
Line between lots 39 and 40, Block 'H'

CALIFORNIA COORDINATE SYSTEM ORDER: FIRST SECOND THIRD
 STATIONS USED: NGS (USC & GS) STATE COUNTY OTHER STATION _____ STATION _____
 ZONE _____ ELEVATION _____ NCRTHINGS (Y) _____

SKETCH: (Include reference tie or witness points, remarks and topo of area)

Map of Fairfax Manor, R.M. Bk. 5-Pg. 4

Found rebar and L.S. 2932
 per 25 O.S. 13



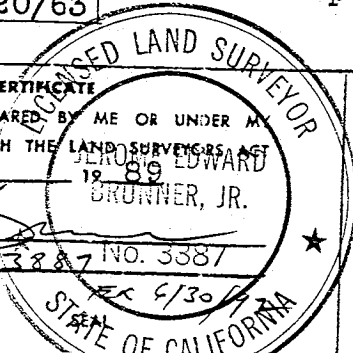
Found pipe and L.S. 4483
 per P.M. 20/63

Meridian based on fence line extension compatible with pipes to the west.

SURVEYOR'S CERTIFICATE

THIS CORNER RECORD WAS PREPARED BY ME OR UNDER MY DIRECTION IN CONFORMANCE WITH THE LAND SURVEYORS ACT ON July 31 1989

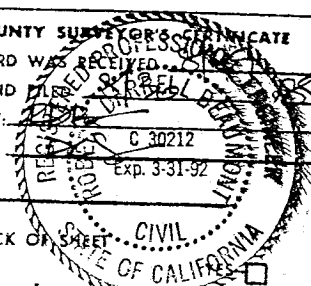
SIGNED: [Signature]
 L.S. or R.C.E. No. LS 3887 NO. 3887



COUNTY SURVEYOR'S CERTIFICATE

THE CORNER RECORD WAS RECEIVED AND EXAMINED AND IS CORRECT AND TRUE BY: [Signature] 1989

TITLE: C 30212
 DOCUMENT No. _____
 STATEMENT ON BACK OF SHEET _____



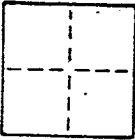
CORNER RECORD

2/3

COUNTY OF Marin T. _____ R. _____ MERIDIAN _____ CALIFORNIA

CORNER TYPE: GOVT. CORNER MEANDER RANCHO CONTROL OTHER

CORNER IDENTIFICATION — DATE OF VISIT _____ 19____



CORNER — LEFT AS FOUND FOUND AND TAGGED REESTABLISHED OBLITERATED CORNER REBUILT

PHYSICAL DESCRIPTION OF CORNER FOUND; EVIDENCE AND METHOD USED TO IDENTIFY OR REESTABLISH

Found various survey points as marked on sketch.

Meridian based on southerly line of Block 'H', Amended map of Fairfax Manor as fenced along old division line, per 5 R.M. 4

PHYSICAL DESCRIPTION OF MONUMENTS REBUILT OR PERPETUATED

Line between lots 39 and 40, Block 'H'

Set rebar and cap L.S. 3887

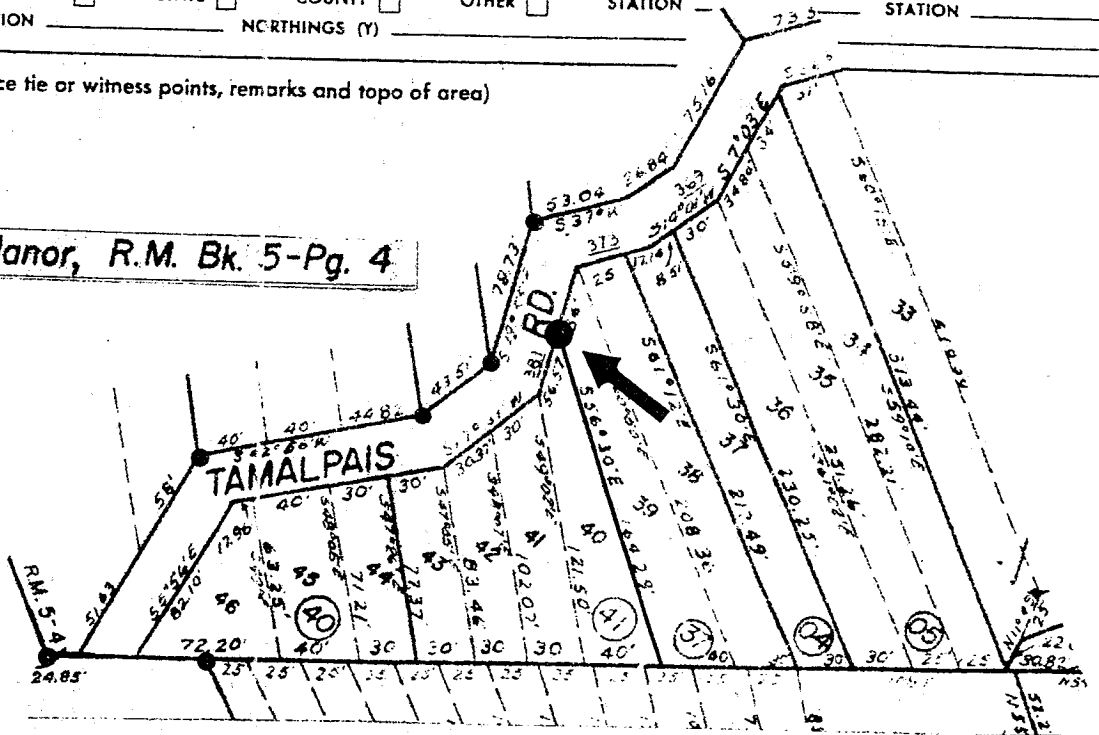
CALIFORNIA COORDINATE SYSTEM ORDER: FIRST SECOND THIRD

STATIONS USED: NGS (USC & GS) STATE COUNTY OTHER STATION _____

ZONE _____ ELEVATION _____ NORTHINGS (Y) _____

SKETCH: (Include reference tie or witness points, remarks and topo of area)

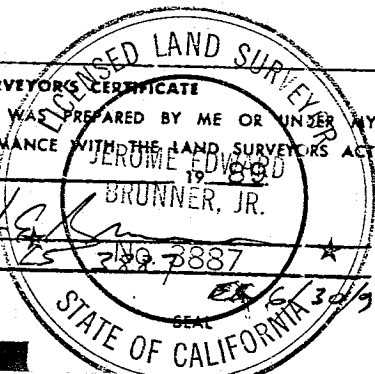
Map of Fairfax Manor, R.M. Bk. 5-Pg. 4



SURVEYOR'S CERTIFICATE

THIS CORNER RECORD WAS PREPARED BY ME OR UNDER MY DIRECTION IN CONFORMANCE WITH THE LAND SURVEYORS ACT ON July 31 1988

SIGNED: [Signature]
L.S. or R.C.E. No. 25 289 3887



COUNTY SURVEYOR'S CERTIFICATE

THIS CORNER RECORD WAS RECEIVED [Signature] 1988

EXAMINED AND FILED [Signature] 1988

Exp. 3-31-92

REGISTERED PROFESSIONAL LAND SURVEYOR
ROBERT J. [Signature]
STATE OF CALIFORNIA

YES NO



JERRICO ASSOCIATES
 SUITE 27
 77 MARK DRIVE
 SAN RAFAEL, CA 94903

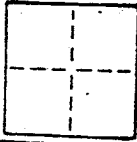
1-063-37

6821

CORNER RECORD

3/3

COUNTY OF Marin T. _____ R. _____ MERIDIAN CALIFORNIA
 CORNER TYPE: GOVT. CORNER MEANDER RANCHO CONTROL OTHER
 CORNER IDENTIFICATION — DATE OF VISIT _____ 19____



CORNER — LEFT AS FOUND FOUND AND TAGGED REESTABLISHED OBLITERATED CORNER REBUILT

PHYSICAL DESCRIPTION OF CORNER FOUND; EVIDENCE AND METHOD USED TO IDENTIFY OR REESTABLISH

Found various survey points as marked on sketch.

Meridian based on southerly line of Block 'H', Amended map of Fairfax Manor as fenced along old division line, per 5 R.M. 4

PHYSICAL DESCRIPTION OF MONUMENTS REBUILT OR PERPETUATED

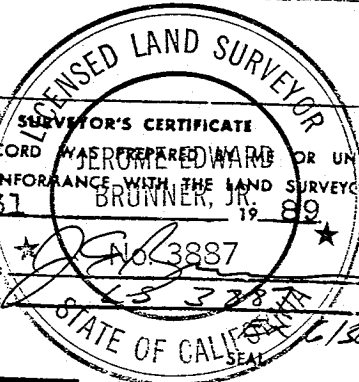
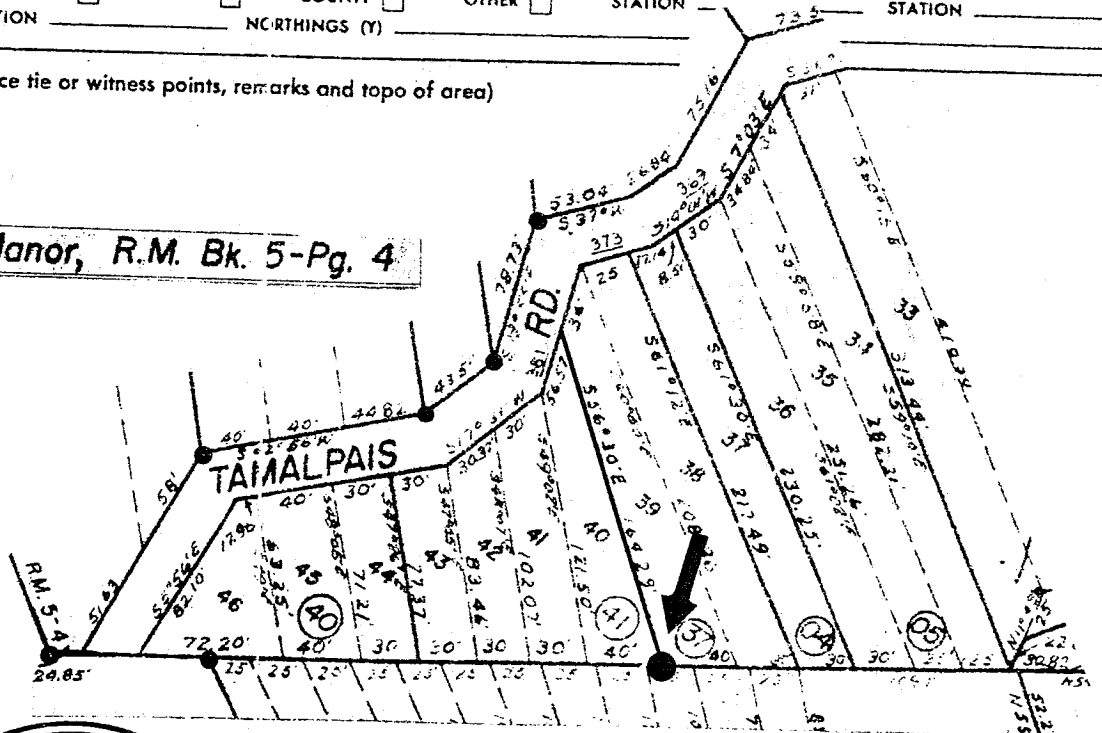
Line between lots 39 and 40, Block 'H'

Set hub and tag L.S. 3887

CALIFORNIA COORDINATE SYSTEM ORDER: FIRST SECOND THIRD
 STATIONS USED: NGS (USC & GS) STATE COUNTY OTHER STATION _____
 ZONE _____ ELEVATION _____ NORTHINGS (Y) _____

SKETCH: (Include reference tie or witness points, remarks and topo of area)

Map of Fairfax Manor, R.M. Bk. 5-Pg. 4



THIS CORNER RECORD WAS PREPARED BY _____ OR UNDER MY DIRECTION IN CONFORMANCE WITH THE LAND SURVEYORS ACT ON July 31 1989

SIGNED: _____
 L.S. or R.C.E. No. 3887

COUNTY SURVEYOR'S CERTIFICATE

THE CORNER RECORD WAS RECEIVED _____ 19____
 AND EXAMINED AND FILED _____ 19____

BY: _____
 TITLE: _____

DOCUMENT No. _____

STATEMENT ON BACK OF SHEET

YES NO