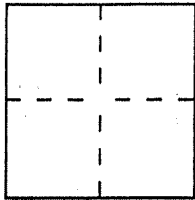


CORNER RECORD

Document Number 001-032-60

City of Fairfax County of Marin, California

Brief Legal Description Marin Assessor's Parcel 001-032-60, 2002 M 180



CORNER TYPE

Government Corner Control
Meander Property
Rancho Other
Date of Survey _____

COORDINATES (Optional)

N. _____
E. _____
Zone _____ Datum _____
Elev. _____

Corner — Left as found Found and tagged Established Reestablished Rebuilt

Identification and type of corner found: Evidence used to identify or procedure used to establish or reestablish the corner:

Found Boundary Points per 2002 Maps, Page 180

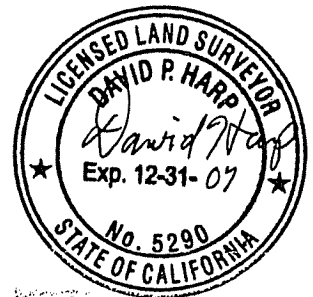
A description of the physical condition of the monument as found and as set or reset:

Set Line Points as shown on attached Sketch Map (over)

SURVEYOR'S STATEMENT

This Corner Record was prepared by me or under my direction in conformance with the Land Surveyors' Act on Jan 9th 2007

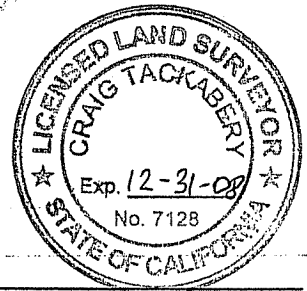
Signed David Hays L.S. or R.C.E. Number LS 5290



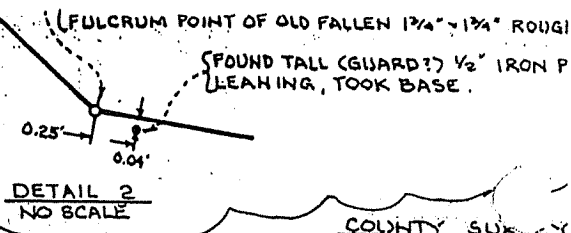
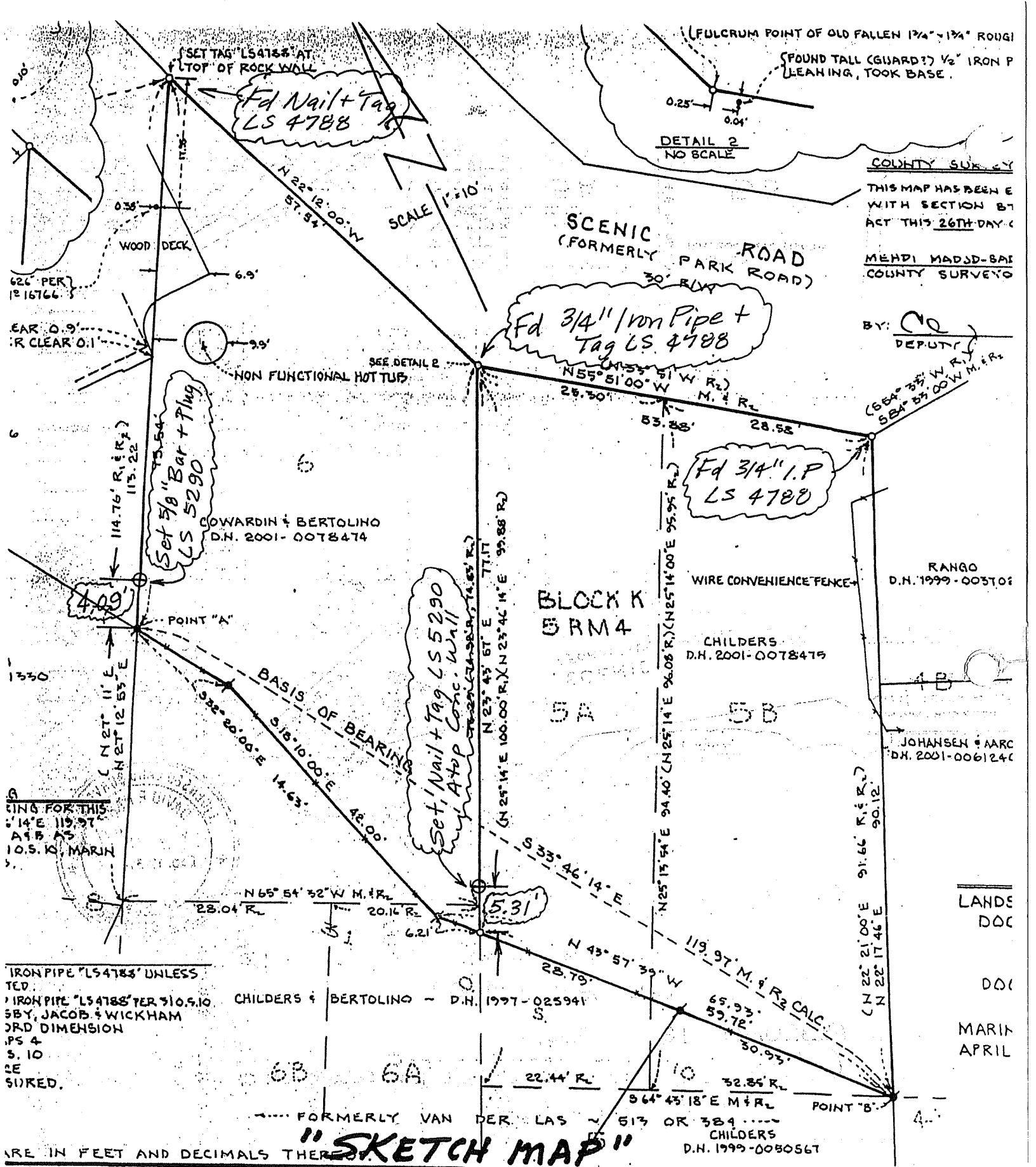
COUNTY SURVEYOR'S STATEMENT

This Corner Record was received JANUARY 11, 2007 and examined and filed FEBRUARY 16, 2007

Signed _____ Title COUNTY SURVEYOR



County Surveyor's Comment _____



COUNTY SURVEY
 THIS MAP HAS BEEN E
 WITH SECTION B7
 ACT THIS 26TH DAY
 MEHDI MADJD-SAI
 COUNTY SURVEYOR

BY: *[Signature]*
 DEPUTY

RANGO
 D.N. 1999-003708

JOHANSEN & AARC
 D.N. 2001-0061240

LANDS
 DOC
 DOC
 MARIN
 APRIL

"SKETCH MAP"

"A Portion of 2002 Maps at Page 180"
 Marin County Records
 (Not to Scale)

IRON PIPE "LS4783" UNLESS
 TED.
 IRON PIPE "LS4783" PER 310.5.10
 SBY, JACOB & WICKHAM
 3RD DIMENSION
 PS 4
 S. 10
 CE
 SIKED.

CHILDERS & BERTOLINO - D.N. 1997-025941

CHILDERS
 D.N. 1999-0080567

OWARDIN & BERTOLINO
 D.N. 2001-0078474

CHILDERS
 D.N. 2001-0078479

INGS FOR THIS
 14'E 119.97'
 A1.8 AS
 10.5.10, MARIN

FORMERLY VAN DER LAS
 513 OR 384
 CHILDERS