

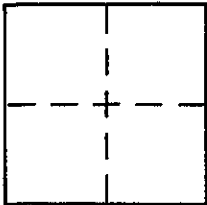
CORNER RECORD

Document Number APN 200-303-04

City of MILL VALLEY

County of MAZIN, California

Brief Legal Description LOT 234 OF 151M10



CORNER TYPE

Government Corner Control
Meander Property
Rancho Other
Date of Survey 20 NOV 2001

COORDINATES (Optional)

N. _____
E. _____
Zone _____ NAD27 NAD83
NAD83 Epoch _____
Elev. _____
Vert. Datum: NGVD29 NAVD88
Meas. Units: Metric Imperial

Corner - Left as found Found and tagged Established Reestablished Rebuilt

Identification and type of corner found: Evidence used to identify or procedure used to establish or reestablish the corner:

SEE PAGE 2
151M10

A description of the physical condition of the monument as found and as set or reset:

SEE PAGE 2

SURVEYOR'S STATEMENT

This Corner Record was prepared by me or under my direction in conformance with the Land Surveyor's Act on DECEMBER 20 2001

Signed [Signature] P.L.S or R.C.E. No. 6784



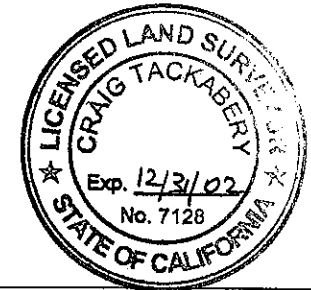
COUNTY SURVEYOR'S STATEMENT

This Corner Record was received DECEMBER 26, 2001

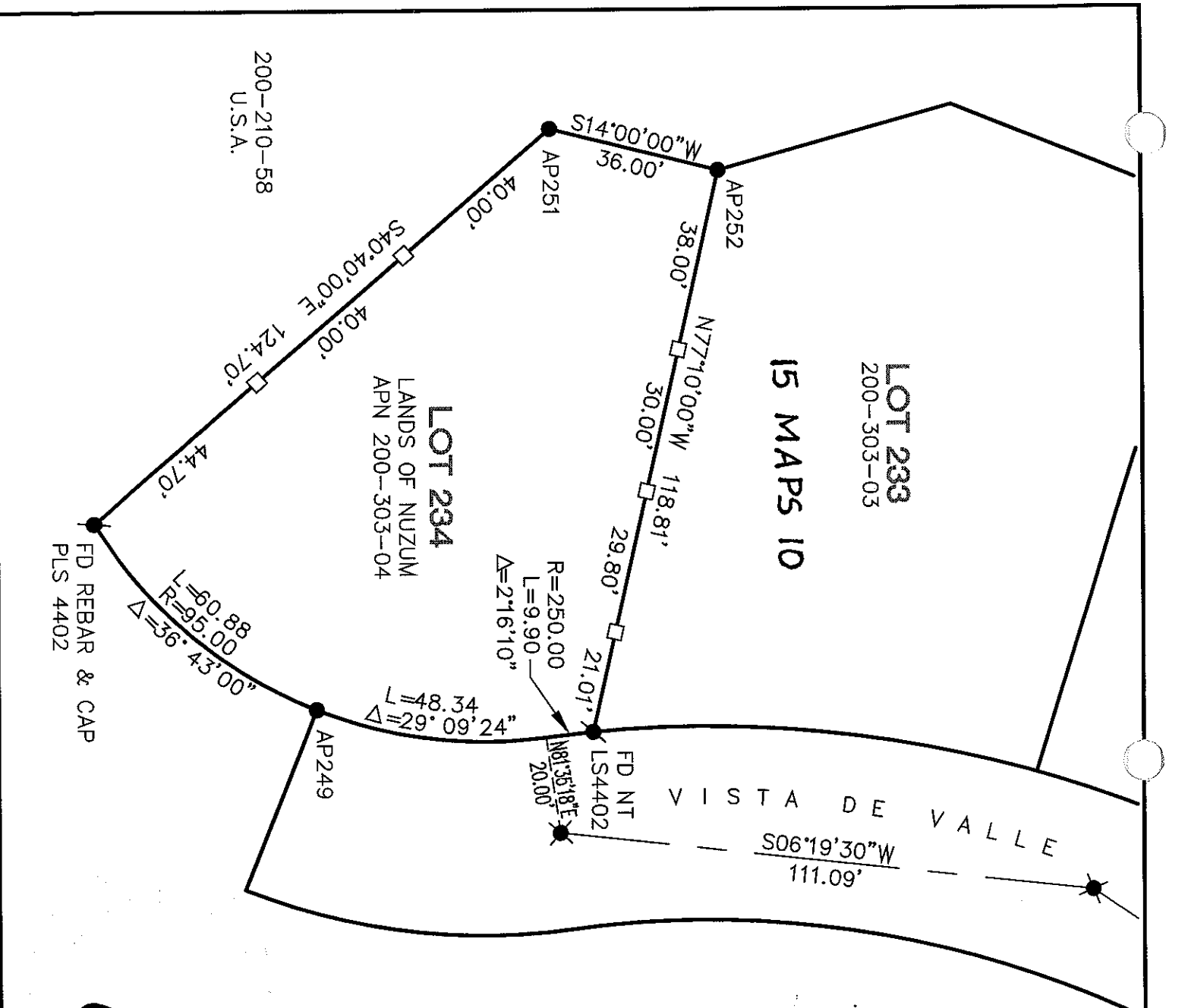
and examined and filed JANUARY 3, 2002

Signed [Signature] P.L.S or R.C.E. No. 7128

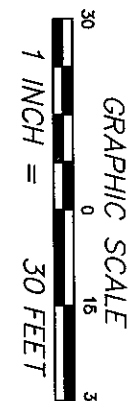
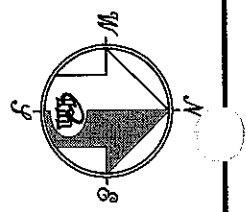
Title DEPUTY



County Surveyor's Comment _____



John J. O'Connell



REFERENCE

"MAP OF MARINVIEW UNIT FOUR... CALIFORNIA" FILED FOR RECORD 3 MARCH 1972 IN VOLUME 15 OF MAPS, AT PAGE 10, OFFICIAL RECORDS OF MARIN COUNTY.

LEGEND

- FOUND STANDARD MONUMENT
- FOUND AS NOTED
- FOUND BUREAU OF LAND MANAGEMENT, UNITED STATES DEPARTMENT OF THE INTERIOR COASTAL SURVEY, BRASS DISK STAMPED T1S R6W & AS SHOWN SET 2x2 HUB & TACK WITH BRASS TAG, PLS 6784
- CORNER RECORD

NOTES

1. RECORD=MEASURED
2. EASEMENTS NOT SHOWN

CORNER RECORD

MERIDIAN SURVEYING ENGINEERING, INC.

1812 UNION STREET
SAN FRANCISCO, CA 94123
(415) 440-4131
info@meridiansurvey.com

100 DRAKES LANDING RD, #164
GREENSBLE, CA 94123
(415) 461-1241