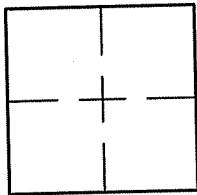


CORNER RECORD

Document Number A.P.200-302-32City of MILL VALLEYCounty of MARIN, CaliforniaChief Legal Description LOT 195 PER 15 R.M. 40

CORNER TYPE COORDINATES (Optional)

Government Corner Control

Meander Property

Rancho Other

Date of Survey 6/19/07

N. _____

E. _____

Zone _____ NAD27 NAD83

 NAD83 Epoch _____

Elev. _____

Vert. Datum: NGVD29 NAVD88

Meas. Units: Metric Imperial

Corner- Left as found Found and tagged Established Reestablished Rebuilt

Identification and type of corner found: Evidence used to identify or procedure used to establish or reestablish the corner:

REESTABLISHED THE PROPERTY LINES FOR LOT 195 PER 15 R.M. 40 FROM FOUND STREET MONUMENTS
IN DURANT WAY AND SHOWN ON 15 R.M. 40 AS SHOWN ON SHEET 2.

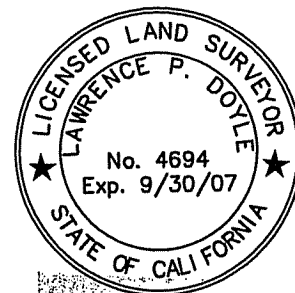
A description of the physical condition of the monument as found and as set or reset: SEE SHEET 2.

SURVEYOR'S STATEMENT

This Corner Record was prepared by me or under my direction in conformance with

the Land Surveyor's Act on JUNE 19 2007

Signed Lawrence P Doyle P.L.S. or R.C.E. No. P.L.S. 4694



COUNTY SURVEYOR'S STATEMENT

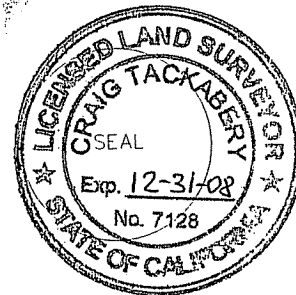
This Corner Record was received JUNE 26, 2007

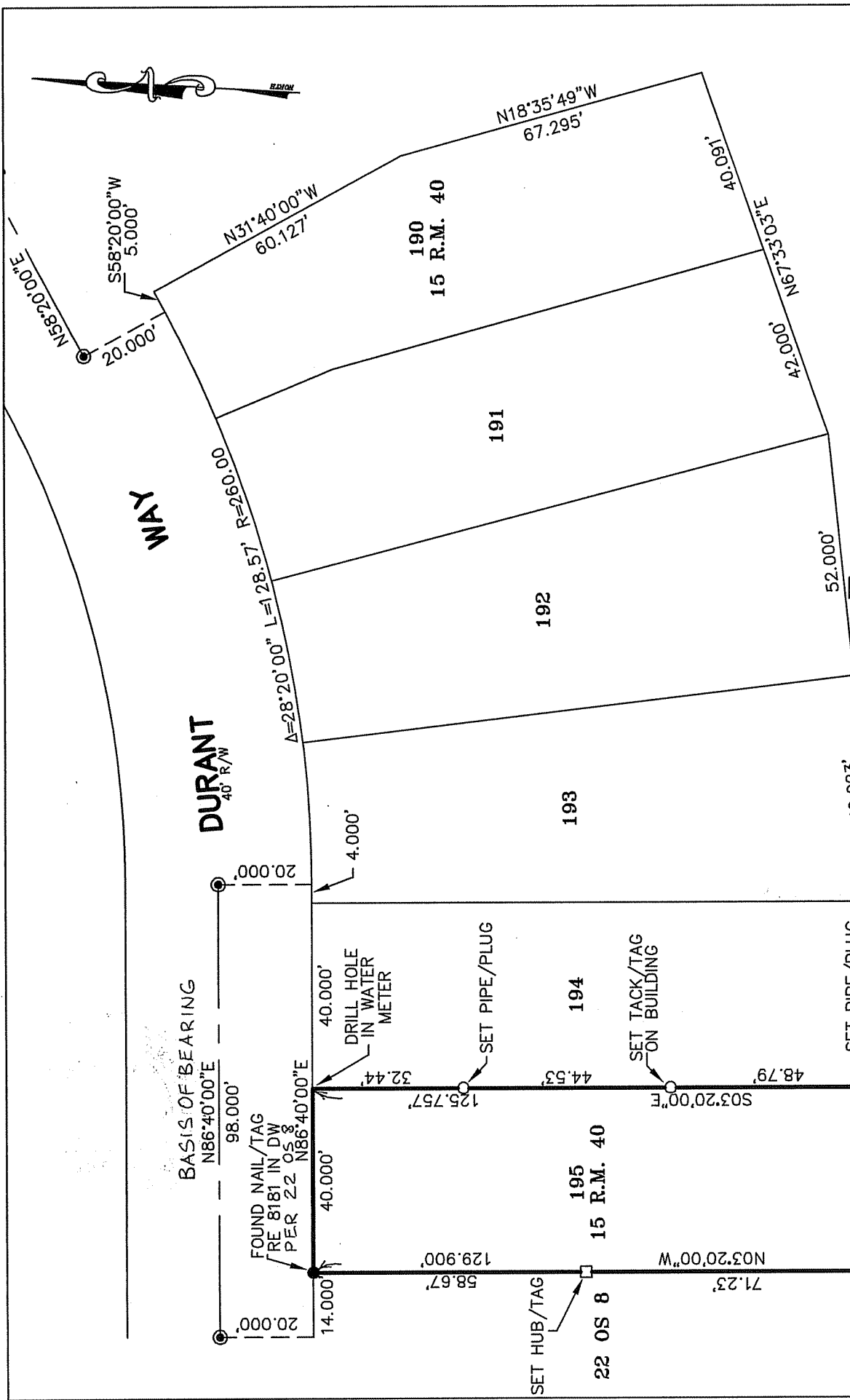
and examined and filed JULY 31, 2007

Signed [Signature] P.L.S. or R.C.E. No. 7128

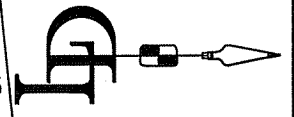
Title COUNTY SURVEYOR

County Surveyor's Comment _____





CORNER RECORD	
LOT 195 PER 15 R.M. 40	
MILL VALLEY	MARIN COUNTY CALIFORNIA
SCALE: 1" = 30'	DRAWN BY: SHEET 2 OF 2
DATE: 6/19/07	LAWRENCE P. DOYLE
LAND SURVEYOR/CIVIL ENGINEER	
100 HELENS LANE MILL VALLEY CA 94941 (415-388-9585)	
DRAWING NO. 1659	



LEGEND

○ STREET MONUMENT

BASIS OF BEARING

THE BASIS OF BEARING IS ACCORDING TO FOUND STREET MONUMENTS PER 15 R.M. 40. N 86° 40' E