

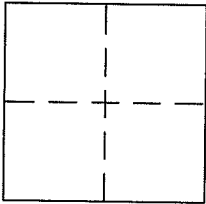
CORNER RECORD

Document Number 200-302-28

City of MILL VALLEY

County of MARIN, California

Brief Legal Description LOT 191 AS SHOWN ON THE MAP ENTITLED "AMENDED MAP OF A PORTION OF MARINVIEW UNIT FOUR" FILED OCTOBER 5, 1972 IN VOL. 15 MAPS PAGE 40, MARIN COUNTY RECORDS



CORNER TYPE

Government Corner Control
 Meander Property
 Rancho Other
 Date of Survey 10/4/2016

COORDINATES (Optional)

N. _____
 E. _____
 Zone _____ NAD27 NAD83
 NAD83 Epoch _____
 Elev. _____
 Vert. Datum: NGVD29 NAVD88
 Meas. Units: Metric Imperial

Corner - Left as found Found and tagged Established Reestablished Rebuilt

Identification and type of corner found: Evidence used to identify or procedure used to establish or reestablish the corner:
SEE PAGE 2

A description of the physical condition of the monument as found and as set or reset:
SEE PAGE 2

SURVEYOR'S STATEMENT

This Corner Record was prepared by me or under my direction in conformance with the Land Surveyor's Act on 2/9 2017

Signed [Signature] P.L.S. or R.C.E. No. 6784



COUNTY SURVEYOR'S STATEMENT

This Corner Record was received OCTOBER 20, 2016
 and examined and filed APRIL 7, 2017

Signed T. W. Park P.L.S. or R.C.E. No. 8176
 Title DEP. COUNTY SURVEYOR



County Surveyor's Comment _____

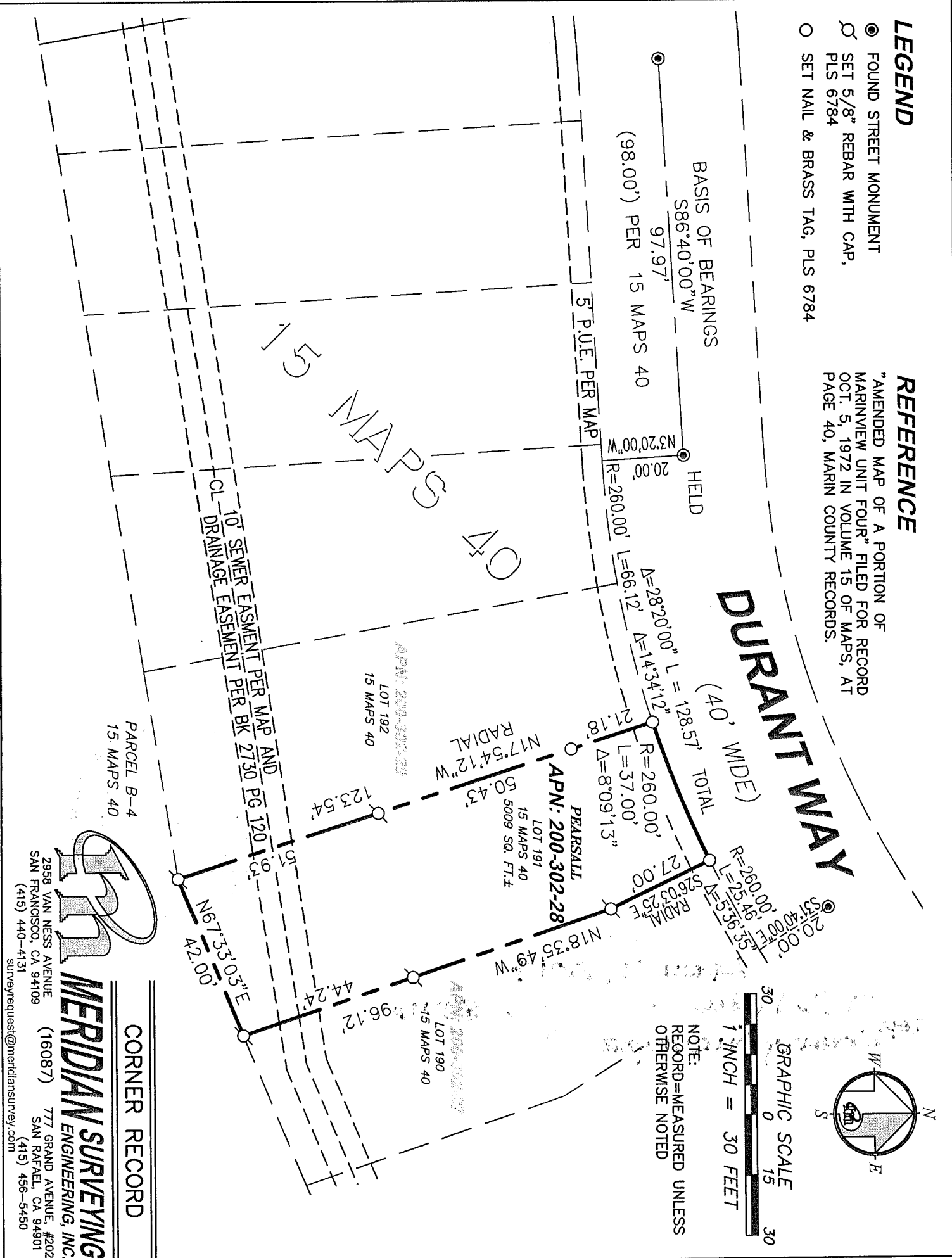
LEGEND

- FOUND STREET MONUMENT
- SET 5/8" REBAR WITH CAP, PLS 6784
- SET NAIL & BRASS TAG, PLS 6784

REFERENCE

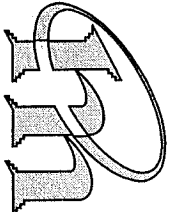
"AMENDED MAP OF A PORTION OF MARINVIEW UNIT FOUR" FILED FOR RECORD OCT. 5, 1972 IN VOLUME 15 OF MAPS, AT PAGE 40, MARIN COUNTY RECORDS.

DURANT WAY
(40' WIDE)



PARCEL B-4
15 MAPS 40

CORNER RECORD



MERIDIAN SURVEYING
ENGINEERING, INC.

2958 VAN NESS AVENUE
SAN FRANCISCO, CA 94109
(415) 440-4131

777 GRAND AVENUE, #202
SAN RAFAEL, CA 94901
(415) 456-5450

surveyrequest@meridiansurvey.com