

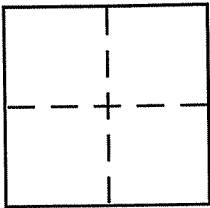
**CORNER RECORD**

Document Number APN 200-302-22

City of TIBURON

County of MARIN, California

Brief Legal Description LOT 185, 15 RM 40 APN 200-302-22



**CORNER TYPE**

Government Corner  Control   
Meander  Property   
Rancho  Other   
Date of Survey 7-25-06

**COORDINATES (Optional)**

N. \_\_\_\_\_  
E. \_\_\_\_\_  
Zone \_\_\_\_\_ NAD27  NAD83   
NAD83 Epoch \_\_\_\_\_  
Elev. \_\_\_\_\_  
Vert. Datum: NGVD29  NAVD88   
Meas. Units: Metric  Imperial

Corner - Left as found  Found and tagged  Established  Reestablished  Rebuilt

Identification and type of corner found: Evidence used to identify or procedure used to establish or reestablish the corner:

EXISTING CORNERS NOT FOUND. RE-ESTABLISHED  
LOT CORNERS FROM RECORD BEARINGS & DISTANCES  
SHOWN ON 15 RM 40.  
BASIS OF BEARINGS: DURANT WAY, FOUND BRASS  
DISK IN WELL MONUMENTS

A description of the physical condition of the monument as found and as set or reset:

SET 1/2" IRON PIPE WITH PLASTIC PLUG  
STAMPED LS 7237 AT FRONT & REAR LOT CORNERS.

**SURVEYOR'S STATEMENT**

This Corner Record was prepared by me or under my direction in conformance with  
the Land Surveyor's Act on JULY 25 2006  
Signed Michael E. Ford P.L.S or R.C.E. No. LS 7237

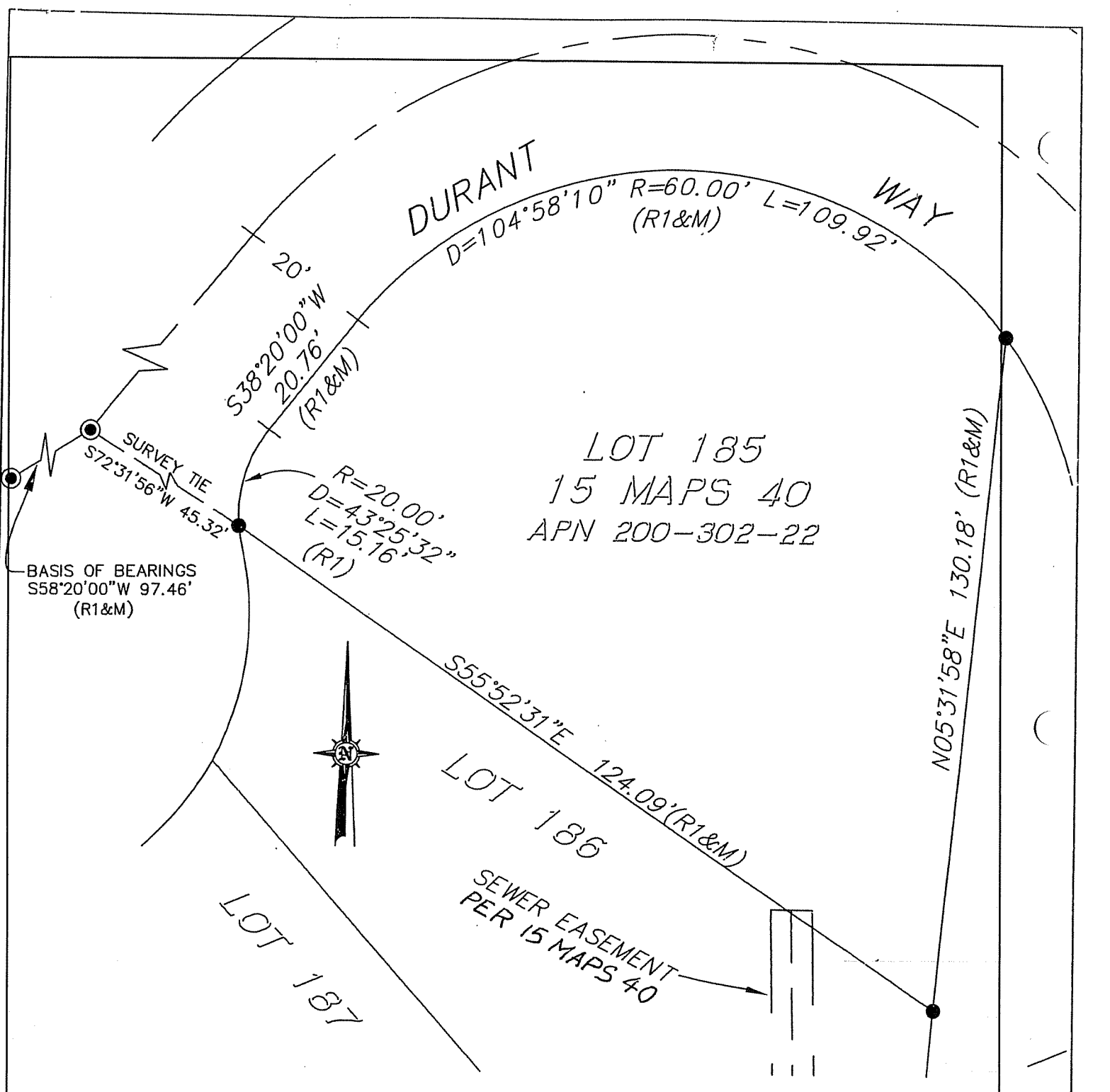


**COUNTY SURVEYOR'S STATEMENT**

This Corner Record was received AUGUST 7, 2006  
and examined and filed SEPTEMBER 28, 2006  
Signed Craig Tackabery P.L.S or R.C.E. No. 7128  
Title COUNTY SURVEYOR

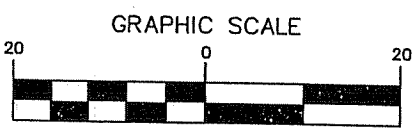


County Surveyor's Comment \_\_\_\_\_



LEGEND

- 1/2" PIPE SET W/TAG, LS7237
- ⊙ BRASS DISK IN CL MONUMENT WELL
- R1 15 MAPS 10
- (R1&M) RECORD & MEASURED



( IN FEET )  
1 inch = 20 ft.

BASIS OF BEARINGS

$S58^{\circ}20'00''W$  BETWEEN FOUND MONUMENTS,  
AS SHOWN IN BOOK 15 RECORD MAPS,  
PAGE 40, MARIN COUNTY RECORDS.

**michael ford inc.**  
**land surveying**

8910 sonoma hwy suite 12b  
po box 1243, kenwood, ca 95  
p 707.833.6468 - f 707.833.5744  
www.michaelfordinc.com