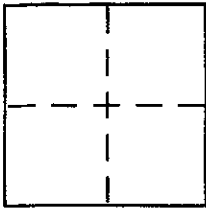


**CORNER RECORD**

Document Number APN# 200-301-21  
County of MARIN, California

City of MILL VALLEY

Brief Legal Description Lot 184, 10 P.M. 100 / 15 R.M. 10



**CORNER TYPE**

Government Corner  Control   
Meander  Property   
Rancho  Other   
Date of Survey October 2003

**COORDINATES (Optional)**

N. \_\_\_\_\_  
E. \_\_\_\_\_  
Zone \_\_\_\_\_ NAD27  NAD83   
NAD83 Epoch \_\_\_\_\_  
Elev. \_\_\_\_\_  
Vert. Datum: NGVD29  NAVD88   
Meas. Units: Metric  Imperial

Corner - Left as found  Found and tagged  Established  Reestablished  Rebuilt

Identification and type of corner found: Evidence used to identify or procedure used to establish or reestablish the corner:

See page 2 of 2

A description of the physical condition of the monument as found and as set or reset:

See page 2 of 2

**SURVEYOR'S STATEMENT**

This Corner Record was prepared by me or under my direction in conformance with the Land Surveyor's Act on JANUARY 30, 2004

Signed [Signature] P.L.S or R.C.E. No. 6784

**COUNTY SURVEYOR'S STATEMENT**

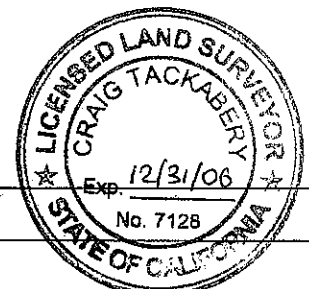
This Corner Record was received FEBRUARY 4, 2004

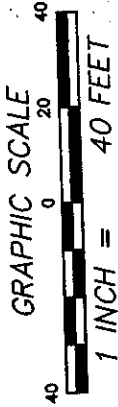
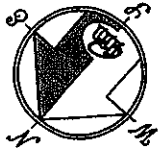
and examined and filed FEBRUARY 10, 2004

Signed [Signature] P.L.S or R.C.E. No. 7128

Title COUNTY SURVEYOR

County Surveyor's Comment \_\_\_\_\_





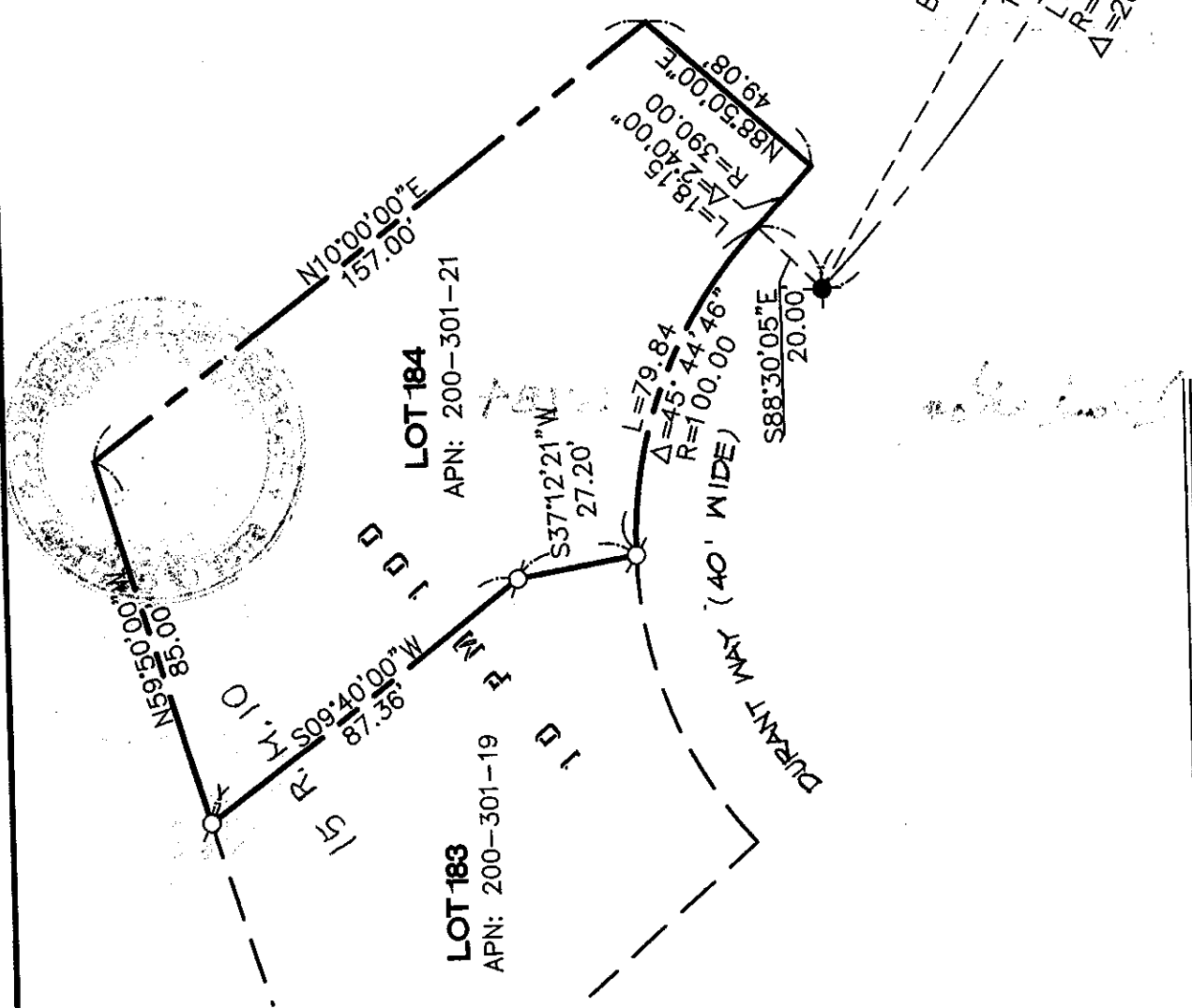
### REFERENCE

PARCEL MAP ENTITLED "BOUNDARY ADJUSTMENT MARINVIEW..." FILED FOR RECORD NOVEMBER 26, 1974 IN VOLUME 10 OF PARCEL MAPS, AT PAGE 100, MARIN COUNTY RECORDS.

### LEGEND

- FOUND STANDARD COUNTY MONUMENTS
- ⊗ SET 5/8" REBAR WITH CAP, PLS 6784

NOTE  
RECORD=MEASURED



**CORNER RECORD**

**MERIDIAN SURVEYING & ENGINEERING, INC.**

1812 UNION ST  
SAN FRANCISCO, CA  
(415) 440-4131 info@meridiansurvey.com

777 GRAND AVENUE, #202  
SAN RAFAEL, CA 94901  
(415) 456-5450