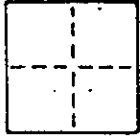


**CORNER RECORD**

COUNTY OF Marin T. \_\_\_\_\_ R. \_\_\_\_\_ MERIDIAN CALIFORNIA  
 CORNER TYPE: GOVT. CORNER  MEANDER  RANCHO  CONTROL  OTHER  Subdivision Map  
 CORNER IDENTIFICATION — DATE OF VISIT May 1992



Most easterly corner of Lot 184 shown on map at Marinview Unit Four in Book 15 of Maps at Page 10  
*A P # 200-301-13. Tamalpais Valley*

CORNER — LEFT AS FOUND  FOUND AND TAGGED  REESTABLISHED OBLITERATED CORNER  REBUILT

PHYSICAL DESCRIPTION OF CORNER FOUND; EVIDENCE AND METHOD USED TO IDENTIFY OR REESTABLISH

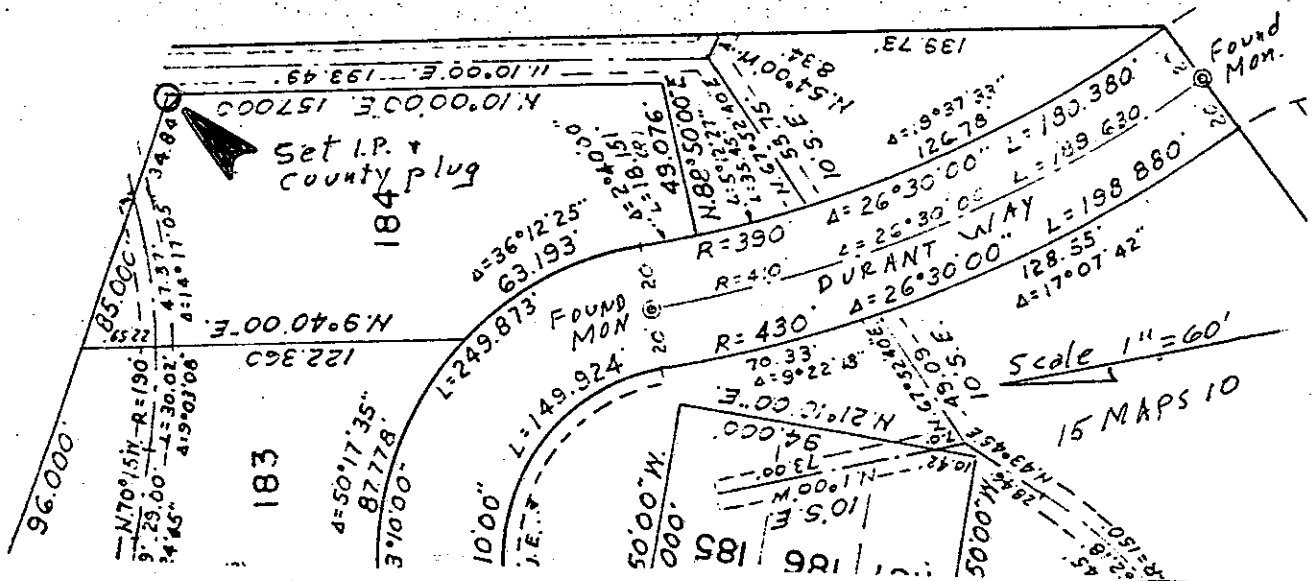
No monument found at subject corner. Point reset per 15 maps 10 from found standard street monuments on Durant Way

PHYSICAL DESCRIPTION OF MONUMENTS, REBUILT OR PERPETUATED

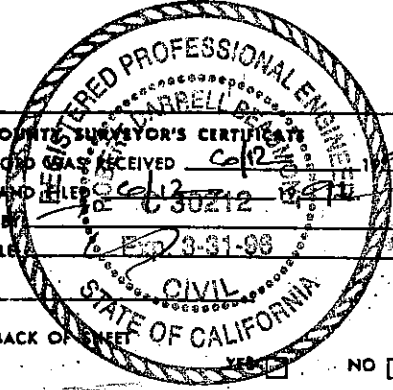
Set 3/4" galvanized steel pipe with yellow plastic plug stamped "Marin County Surveyor"

CALIFORNIA COORDINATE SYSTEM ORDER: FIRST  SECOND  THIRD   
 STATIONS USED: NGS (USC & GS)  STATE  COUNTY  OTHER  STATION \_\_\_\_\_ STATION \_\_\_\_\_  
 ZONE \_\_\_\_\_ ELEVATION \_\_\_\_\_ NORTHINGS (N) \_\_\_\_\_ EASTINGS (X) \_\_\_\_\_

SKETCH: (Include reference tie or witness points, remarks and topo of area)



**SURVEYOR'S CERTIFICATE**  
 THIS CORNER RECORD WAS PREPARED BY ME OR UNDER MY DIRECTION IN CONFORMANCE WITH THE LAND SURVEYORS ACT OF 1992  
 SIGNED: Donald J. Thomas  
 L.S. No. 453288



**COUNTY SURVEYOR'S CERTIFICATE**  
 THE CORNER RECORD WAS RECEIVED AND EXAMINED AND FILED  
 FILE NO. 630212  
 TITLE: Exp 3-31-98  
 DOCUMENT No. \_\_\_\_\_  
 STATEMENT ON BACK OF SHEET \_\_\_\_\_ NO

SEAL