

CORNER RECORD



JERRICO ASSOCIATES

SUITE 27
77 MARK DRIVE
SAN RAFAEL, CA 94903

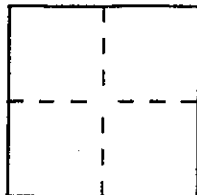
7128

Document Number 200-301-08

City of Mill Valley

County of Marin, California

Brief Legal Description Lot 179 MarinView Unit 4 15 RM 10



CORNER TYPE

Government Corner Control
Meander Property
Rancho Other
Date of Survey March 7, 1995

COORDINATES (Optional)

N. _____
E. _____
Zone _____ Datum _____
Elev. _____

Corner — Left as found Found and tagged Established Reestablished Rebuilt

Identification and type of corner found: Evidence used to identify or procedure used to establish or reestablish the corner:
Standard County Monument on DURANT Way fronting Lot 179.180,181.

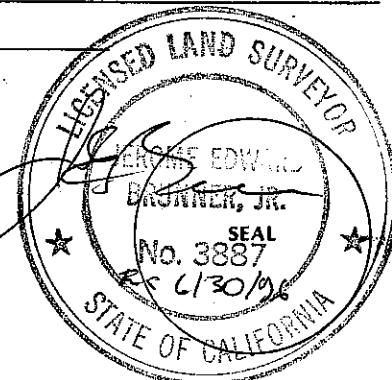
A description of the physical condition of the monument as found and as set or reset: _____

(A) & (B) Set #5 rebar and cap LS 3887

SURVEYOR'S STATEMENT

This Corner Record was prepared by me or under my direction in conformance with the Land Surveyors' Act on March 7 19 95.

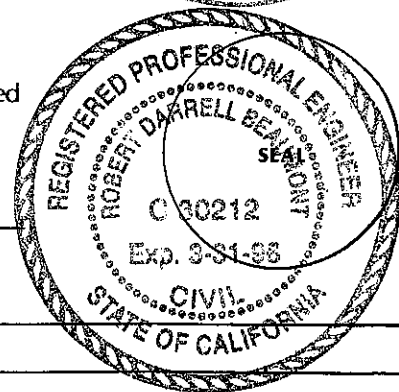
Signed [Signature] L.S. or R.C.E. Number LS 3887
Ex 8130/96



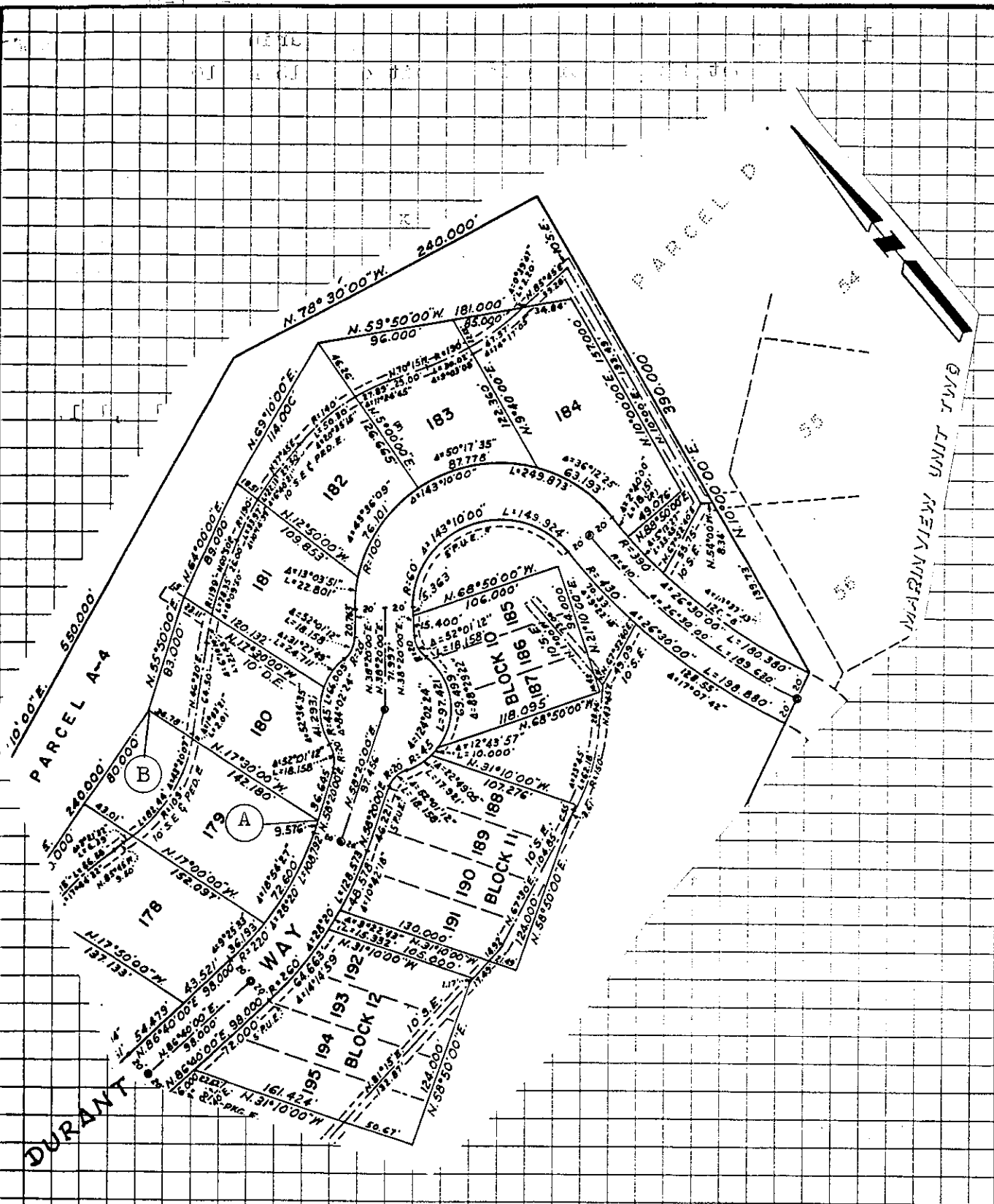
COUNTY SURVEYOR'S STATEMENT

This Corner Record was received 3-14 19 95 and examined and filed 3-14 19 95.

Signed [Signature] Title DES



County Surveyor's Comment _____



MAP OF

MARINVIEW UNIT FOUR
 IN THE COUNTY OF MARIN, CALIFORNIA