

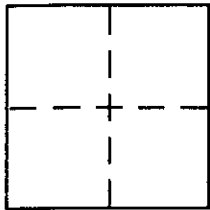
CORNER RECORD

Document Number AP 200-282-02

City of Mill Valley

County of MARIN, California

Brief Legal Description LOT 142, 14 RM 79; APN 200-282-02; 375 COUNTRYVIEW DR



CORNER TYPE

- Government Corner Control
- Meander Property
- Rancho Other
- Date of Survey _____

COORDINATES (Optional)

- N. _____
- E. _____
- Zone _____ NAD27 NAD83
- NAD83 Epoch _____
- Elev. _____
- Vert. Datum: NGVD29 NAVD88
- Meas. Units: Metric Imperial

Corner - Left as found Found and tagged Established Reestablished Rebuilt

Identification and type of corner found: Evidence used to identify or procedure used to establish or reestablish the corner:

See Sketch on Back

A description of the physical condition of the monument as found and as set or reset:

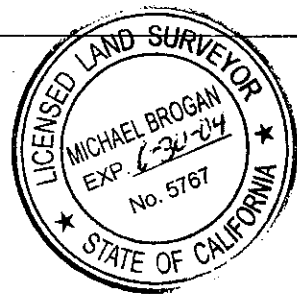
See Sketch on Back

SURVEYOR'S STATEMENT

This Corner Record was prepared by me or under my direction in conformance with

the Land Surveyor's Act on August 6 2002

Signed Michael A. Brogan P.L.S or R.C.E. No. LS 5767



COUNTY SURVEYOR'S STATEMENT

This Corner Record was received AUGUST 8, 2002

and examined and filed AUGUST 12, 2002

Signed [Signature] P.L.S or R.C.E. No. 7128

Title DEPUTY

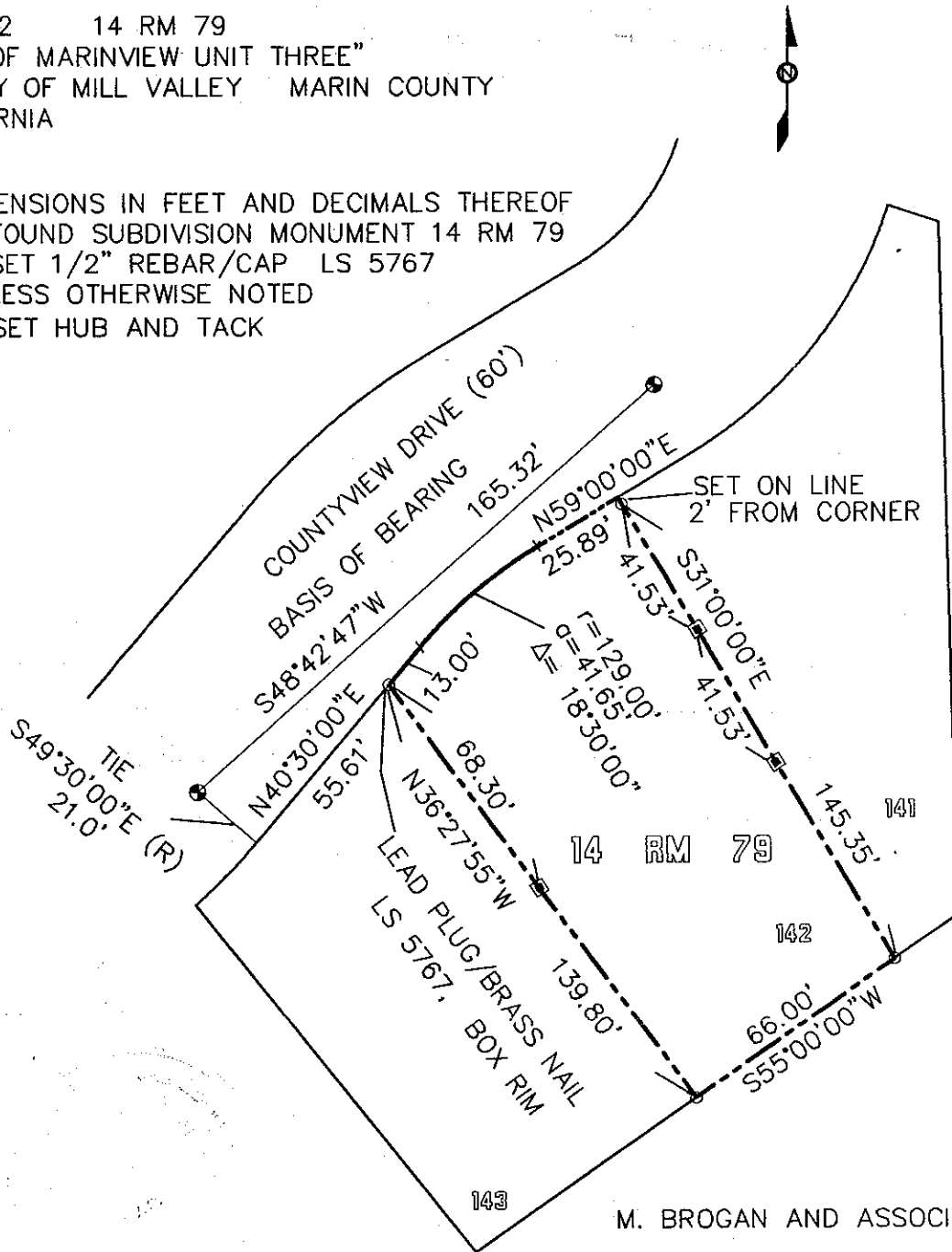


County Surveyor's Comment _____

CORNER RECORD

LOT 142 14 RM 79
 "MAP OF MARINVIEW UNIT THREE"
 VICINITY OF MILL VALLEY MARIN COUNTY
 CALIFORNIA

- DIMENSIONS IN FEET AND DECIMALS THEREOF
- = FOUND SUBDIVISION MONUMENT 14 RM 79
 - = SET 1/2" REBAR/CAP LS 5767
 - UNLESS OTHERWISE NOTED
 - ◊ = SET HUB AND TACK



M. BROGAN AND ASSOCIATES, INC.

319 MILLER AVENUE SUITE 4
 MILL VALLEY CA 94941
 JOB NO. 5549 AUGUST 2002
 SCALE: 1" = 40'

APN 200-282-02