

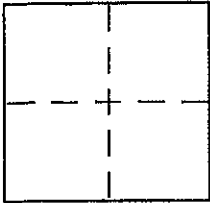
CORNER RECORD

Document Number 200-281-16

City of Mill Valley

County of Marin, California

Brief Legal Description LOT 130, 14 RM 79



CORNER TYPE

Government Corner Control
Meander Property
Rancho Other
Date of Survey 5-25-00

COORDINATES (Optional)

N. _____
E. _____
Zone _____ NAD27 NAD83
NAD83 Epoch _____
Elev. _____
Vert. Datum: NGVD29 NAVD88
Meas. Units: Metric Imperial

Corner -- Left as found Found and tagged Established Reestablished Rebuilt

Identification and type of corner found: Evidence used to identify or procedure used to establish or reestablish the corner:

SEE PLAT, PAGE 2 OF 2.

A description of the physical condition of the monument as found and as set or reset:

SEE PLAT, PAGE 2 OF 2.

SURVEYOR'S STATEMENT

This Corner Record was prepared by me or under my direction in conformance with

the Land Surveyor's Act on JUNE 15, 2000

Signed [Signature] P.L.S. or ~~REDACTED~~ No. 6649



COUNTY SURVEYOR'S STATEMENT

This Corner Record was received JUNE 29, 2000

and examined and filed JULY 6, 2000

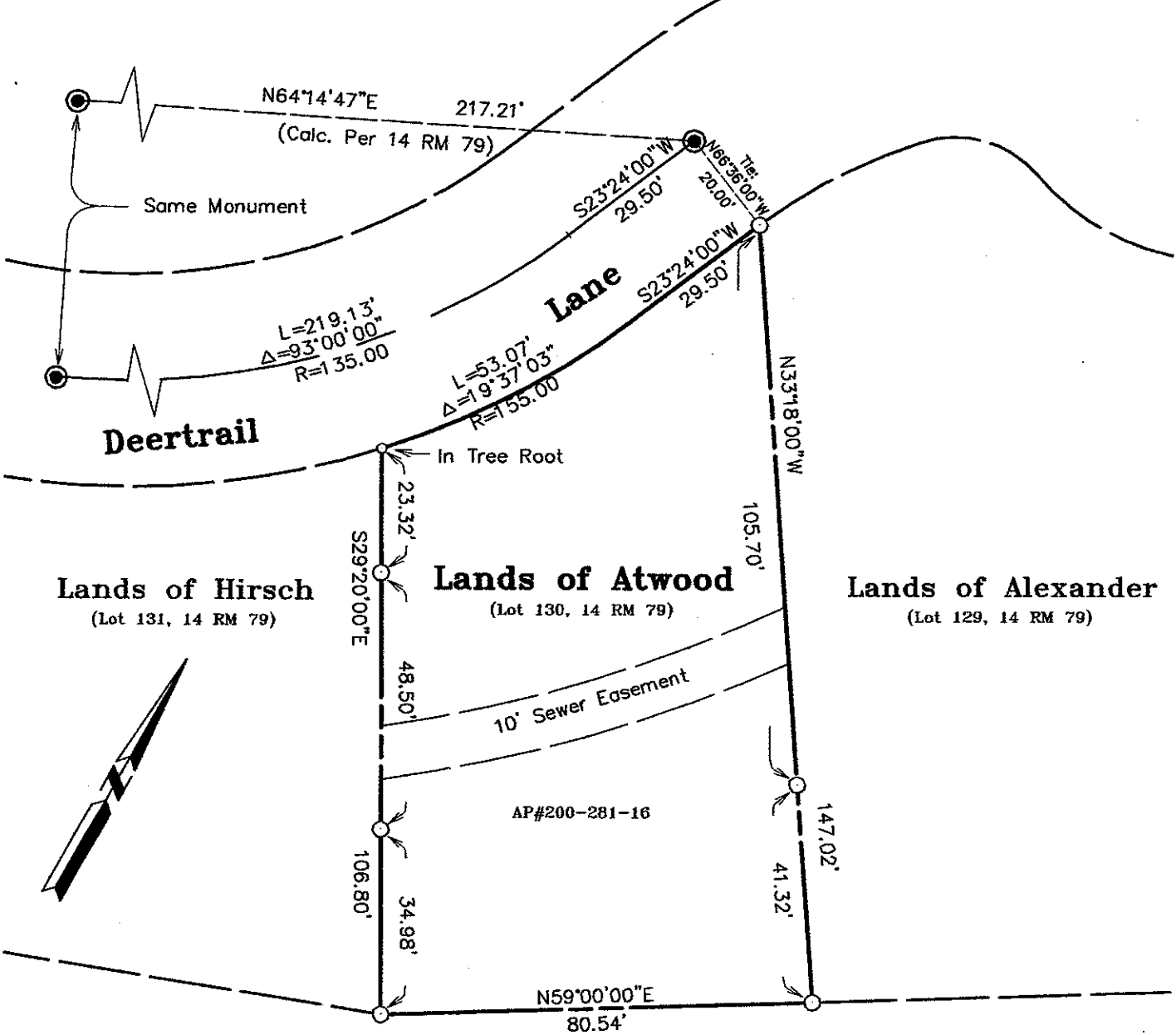
Signed [Signature] P.L.S. or R.C.E. No. 26450

Title DEPUTY

County Surveyor's Comment _____



All distances shown are in feet and decimals thereof



Countyview

Drive

LEGEND

- Found Standard Street Monument
- Set Nail & Tag, (Stamped As Noted)
- Set 3/4" Iron Pipe & Plastic Plug, Stamped LS 6649

Lands of Atwood

(Lot 130, 14 RM 79)

Mill Valley Marin County California
Scale: 1" = 30' June 2000

L.A. Stevens & Associates, Inc.

Professional Land Surveyors * (415) 382-8321
1132 Bel Marin Keys Blvd. * Novato, CA 94947

Job # 00-409

Page 2 Of 2



Lawrence A. Stevens, PLS 6649
my license expires 12/31/03