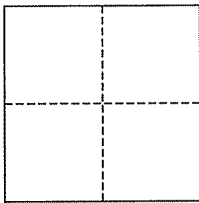


CORNER RECORD

City of Mill Valley

Document Number AP# 200-263-15
County of Marin, California

Brief Legal Description Lot 93, 14 RM 66



CORNER TYPE

Government Corner Control
Meander Property
Rancho Other
Date of Survey April 16, 2008

COORDINATES (Optional)

N. _____
E. _____
Zone _____ NAD27 NAD83
NAD83 Epoch _____
Elev. _____
Vert. Datum: NGVD29 NAVD88
Meas. Units: Metric Imperial

Corner- Left as found Found and tagged Established Reestablished Rebuilt

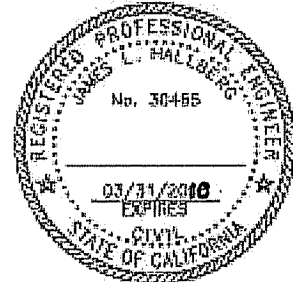
Identification and type of corner found: Evidence used to identify or procedure used to establish or reestablish the corner:
Standard Street Monuments on Carrera Drive, per 14 RM 66.

A description of the physical condition of the monument as found and as set or reset: Set Rebar&Cap and Iron Pipe&Plug on property line as noted and shown upon this Map.

SURVEYOR'S STATEMENT

This corner Record was prepared by me or under my direction in conformance with the Land Surveyor's Act on June 5, 2008

Signed [Signature] P.L.S. or R.C.E. No. 30465



COUNTY SURVEYOR'S STATEMENT

This Corner Record was received JUNE 6, 2008 and examined and filed JUNE 11, 2008

Signed [Signature] P.L.S. or R.C.E. No. 7128

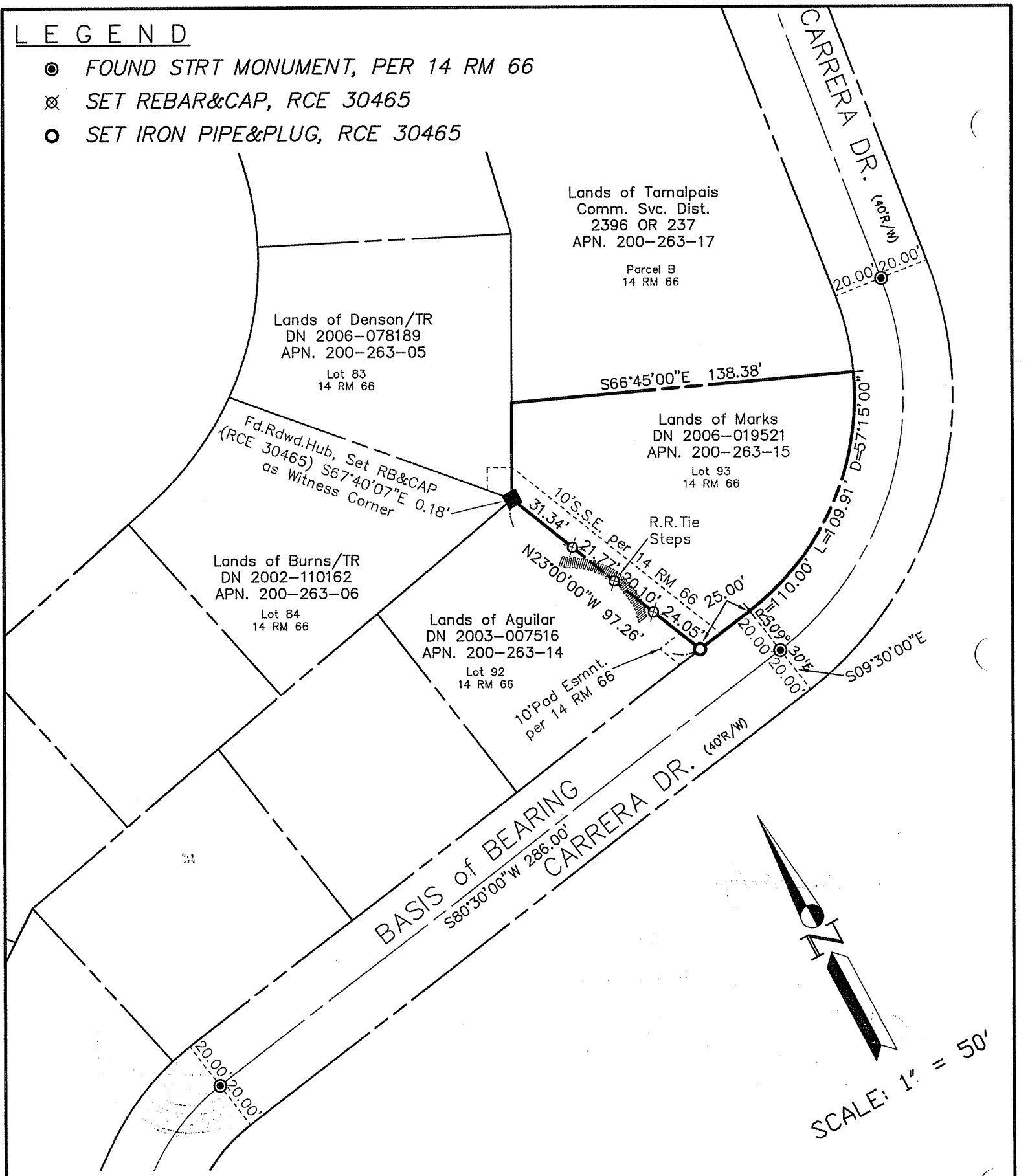
Title COUNTY SURVEYOR



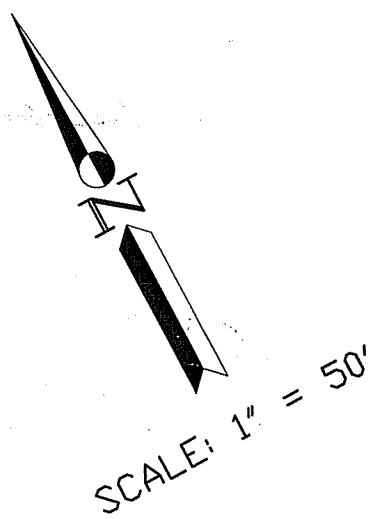
County Surveyor's Comment _____

LEGEND

- FOUND STRT MONUMENT, PER 14 RM 66
- ⊗ SET REBAR&CAP, RCE 30465
- SET IRON PIPE&PLUG, RCE 30465



Note: All distances are in feet and decimals thereof.



SHEET	1	OF	1
SCALE:	1" = 50'	DESIGN:	P.R.
DATE:	Jun. 2008	DRAWN:	P.R.
FILE:	2006-051	CHECKED:	J.L.H

J.L. ENGINEERING
CIVIL ENGINEERS-LAND SURVEYORS
 1539 4th ST., SAN RAFAEL, CA. 94901 (415) 457-6647

Corner Record
 Lands of Marks - 379 Carrera Dr.
 APN 200-263-15, Mill Valley, Marin County, CA