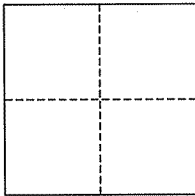


CORNER RECORD

City of Mill Valley

Document Number AP# 200-263-15
County of Marin, California

Brief Legal Description Lot 93, 14 RM 66



CORNER TYPE

Government Corner Control
Meander Property
Rancho Other
Date of Survey April 16, 2007

COORDINATES (Optional)

N. _____
E. _____
Zone _____ NAD27 NAD83
NAD83 Epoch _____
Elev. _____
Vert. Datum: NGVD29 NAVD88
Meas. Units: Metric Imperial

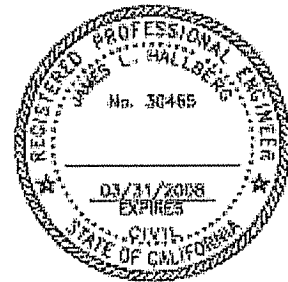
Corner- Left as found Found and tagged Established Reestablished Rebuilt

Identification and type of corner found: Evidence used to identify or procedure used to establish or reestablish the corner:
Standard Street Monuments on Carrera Drive, per 14 RM 66.

A description of the physical condition of the monument as found and as set or reset: Set 2 Hub & Tacks on property line as noted and shown upon this Map.

SURVEYOR'S STATEMENT

This corner Record was prepared by me or under my direction in conformance with
the Land Surveyor's Act on May 29, 2007
Signed _____ P.L.S. or R.C.E. No. 30465



COUNTY SURVEYOR'S STATEMENT

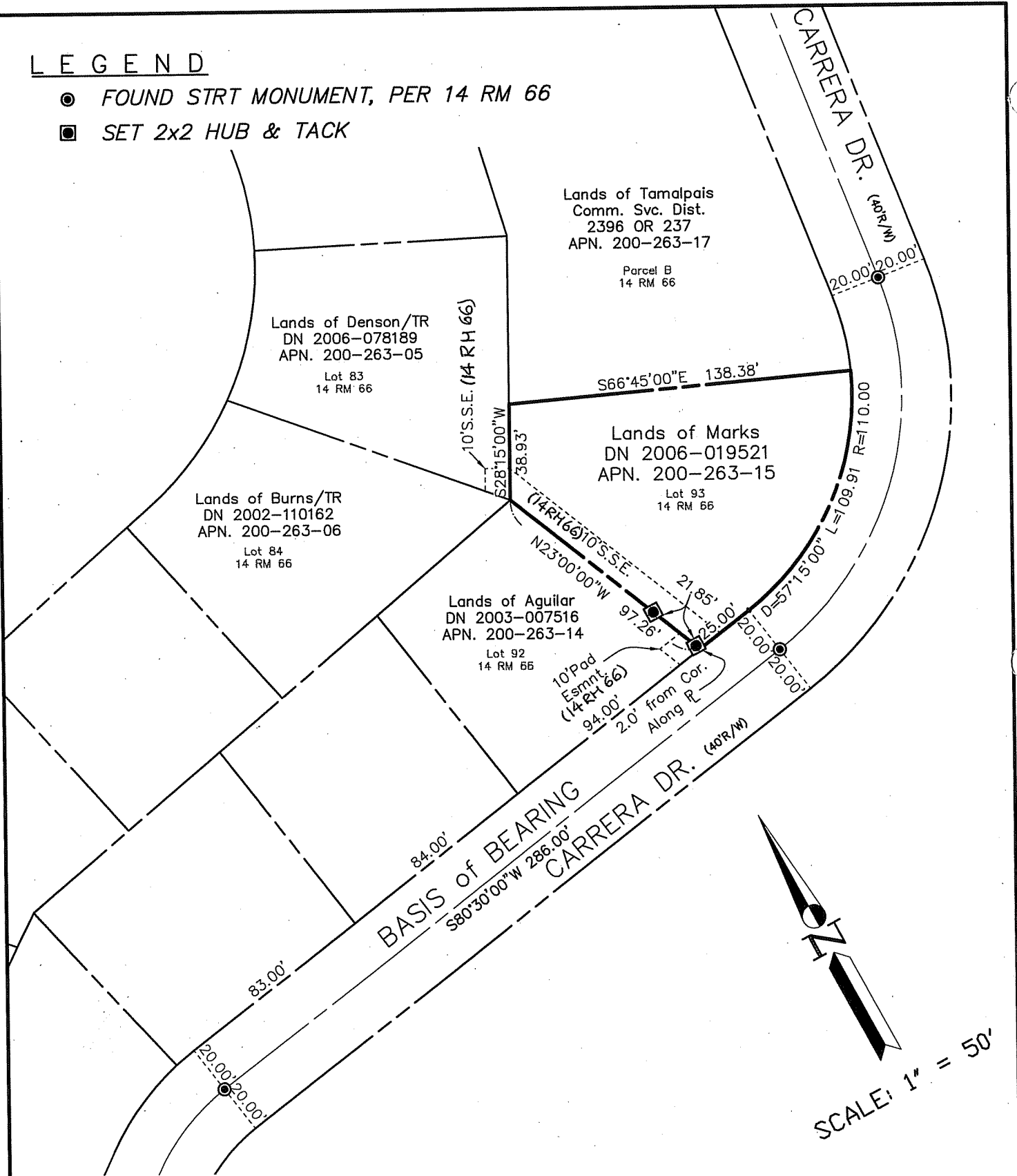
This Corner Record was received JUNE 6, 2007
and examined and filed JULY 12, 2007
Signed [Signature] P.L.S. or R.C.E. No. 7128
Title COUNTY SURVEYOR



County Surveyor's Comment _____

LEGEND

- FOUND STRT MONUMENT, PER 14 RM 66
- SET 2x2 HUB & TACK



Note: All distances are in feet and decimals thereof.

SHEET	1	OF	1
SCALE:	1" = 50'	DESIGN:	P.R.
DATE:	May, 2007	DRAWN:	P.R.
FILE:	2006-051	CHECKED:	J.L.H.
G:\Land Projects\2006-051\dwg\CorRec.dwg			

J.L. ENGINEERING
CIVIL ENGINEERS-LAND SURVEYORS
 1539 4th ST., SAN RAFAEL, CA. 94901 (415) 457-6647

Corner Record
 Lands of Marks - 379 Carrera Dr.
 APN 200-263-15, Mill Valley, Marin County, CA