

CORNER RECORD

Assessor's Parcel No. 200-263-04

County of Marin California

Brief Legal Description: Lot 82, 14 RM 66 Marin County Records

CORNER TYPE

COORDINATES  
(Optional)

Lot in Existing Subdivision

None

Corners - None found. Re-established front corners based on street monuments shown on 14 Maps 66. Set three front property corner monuments as shown on this Corner Record.

Description of Monuments reset: Monuments set are 3/4 inch iron pipes and tags LS 4397.

SURVEYOR'S STATEMENT

This Corner Record was prepared by me or under my direction in conformance with the Land Surveyor's Act on July 21, 2014.

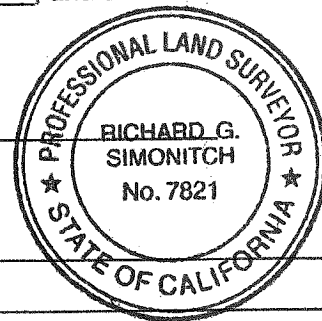
Signed Dale White LS 4397 9-25-14



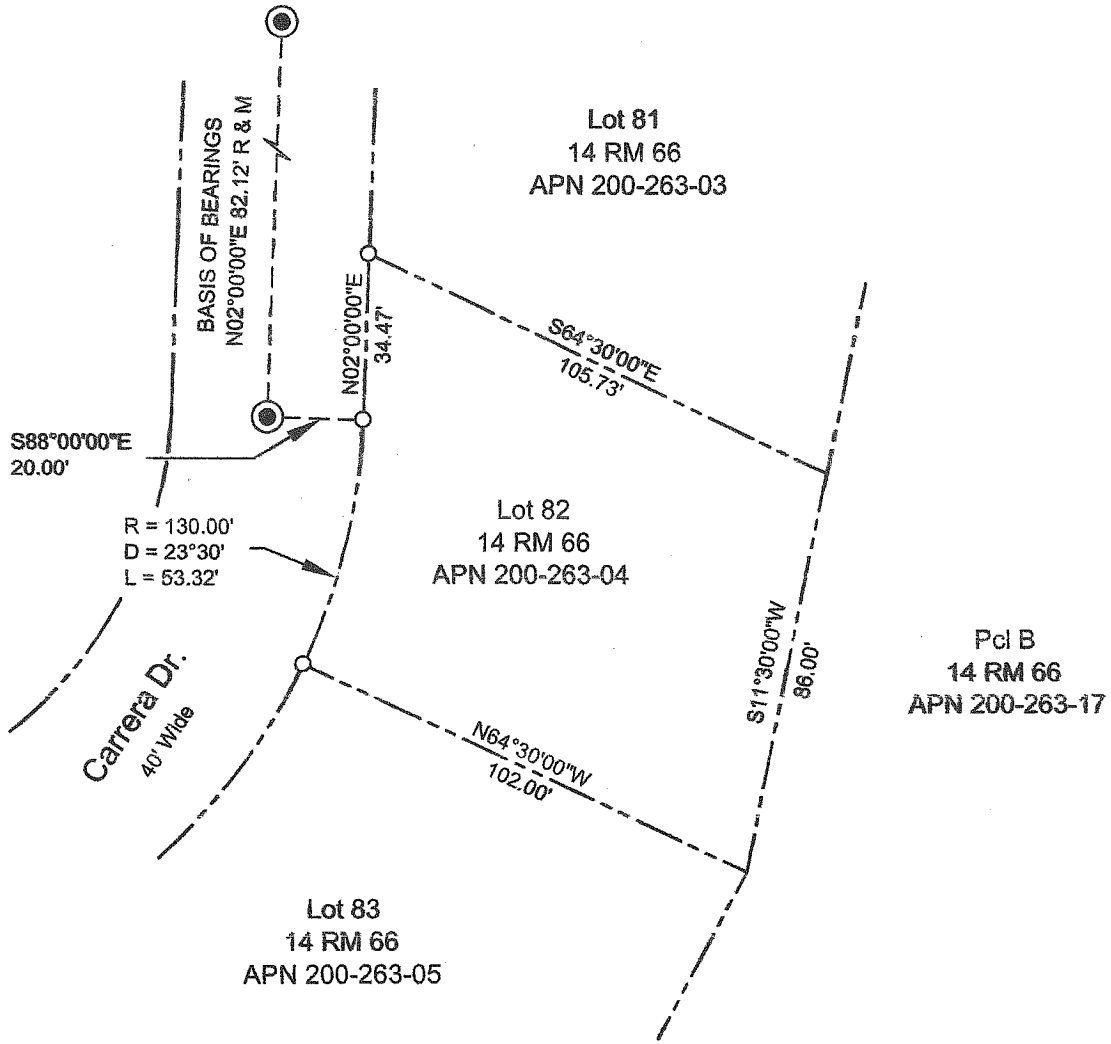
COUNTY SURVEYOR'S STATEMENT

This Corner Record was received 7/27/14, 2014, and examined and filed OCTOBER 15, 2014.

Signed Richard G. Simonitch Title DEPUTY



County Surveyor's Comments \_\_\_\_\_  
\_\_\_\_\_  
\_\_\_\_\_



**Legend**

- Property Line
- ⊙ Fd. Street Monument  
Per 14 RM 66
- Set 3/4" Iron Pipe  
And Tag LS 4397



Scale: 1" = 40'

345 Carrera Drive  
Mill Valley, CA  
APN 200-263-04

**Corner Record**

Property Survey  
Lot 82, 14 RM 66  
Marin County Records