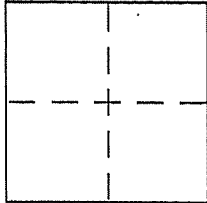


CORNER RECORD

VICINITY City of TAM VALLEY

Document Number APN 200-251-20
County of MARIN, California

Brief Legal Description LOT 34 PER 14 R.M. 51



CORNER TYPE

Government Corner Control
Meander Property
Rancho Other
Date of Survey 4-18-06

COORDINATES (Optional)

N. _____
E. _____
Zone _____ NAD27 NAD83
NAD83 Epoch _____
Elev. _____
Vert. Datum: NGVD29 NAVD88
Meas. Units: Metric Imperial

Corner - Left as found Found and tagged Established Reestablished Rebuilt

Identification and type of corner found: Evidence used to identify or procedure used to establish or reestablish the corner:

=SEE OVER=

A description of the physical condition of the monument as found and as set or reset:

=SEE OVER=

SURVEYOR'S STATEMENT

This Corner Record was prepared by me or under my direction in conformance with the Land Surveyor's Act on APRIL 23, 2006

Signed David Contreras P.L.S or R.C.E. No. PLS 5065



COUNTY SURVEYOR'S STATEMENT

This Corner Record was received MAY 15, 2006

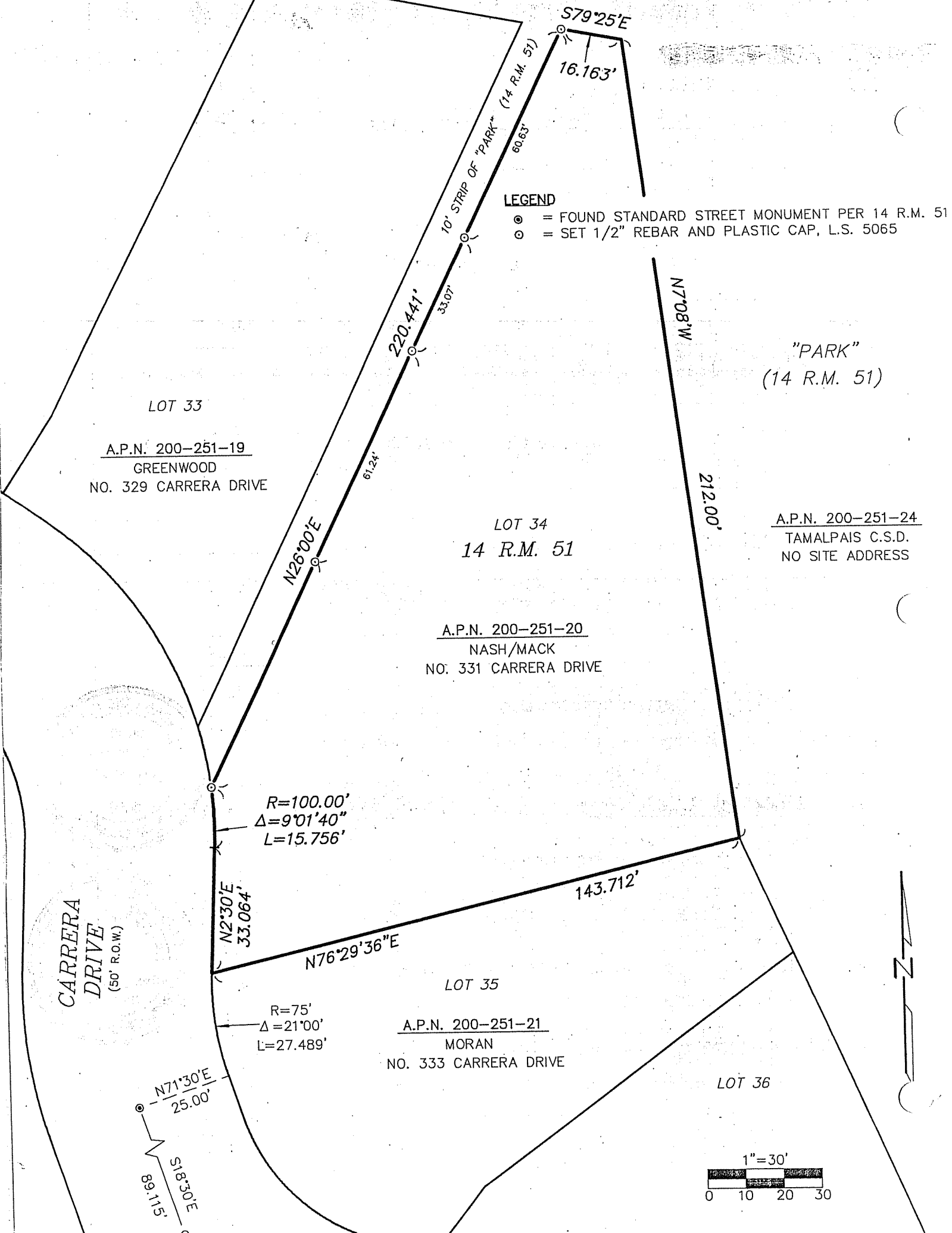
and examined and filed MAY 31, 2006

Signed _____ P.L.S or R.C.E. No. 7128

Title COUNTY SURVEYOR



County Surveyor's Comment _____



LOT 33
 A.P.N. 200-251-19
 GREENWOOD
 NO. 329 CARRERA DRIVE

LOT 34
 14 R.M. 51

A.P.N. 200-251-20
 NASH/MACK
 NO. 331 CARRERA DRIVE

LOT 35
 A.P.N. 200-251-21
 MORAN
 NO. 333 CARRERA DRIVE

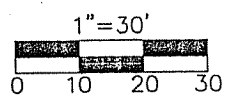
"PARK"
 (14 R.M. 51)

A.P.N. 200-251-24
 TAMALPAIS C.S.D.
 NO SITE ADDRESS

LEGEND

- ⊙ = FOUND STANDARD STREET MONUMENT PER 14 R.M. 51
- = SET 1/2" REBAR AND PLASTIC CAP, L.S. 5065

CARRERA DRIVE
 (50' R.O.W.)



10' STRIP OF "PARK" (14 R.M. 51)
 60.63'
 16.163'
 S79°25'E
 220.441'
 33.07'
 N26°00'E
 61.24'
 212.00'
 N7°08'W
 R=100.00'
 Δ=9°01'40"
 L=15.756'
 N2°30'E
 33.064'
 143.712'
 N76°29'36"E
 R=75'
 Δ=21°00'
 L=27.489'
 N71°30'E
 25.00'
 89.115'
 S18°30'E