

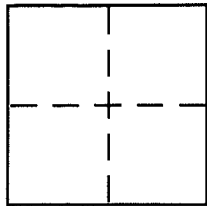
CORNER RECORD

Document Number 200-251-17,18

City of Mill Valley

County of Marin, California

Brief Legal Description Lot 31 and 32, Marinview Unit One, RM 14-51



CORNER TYPE

Government Corner Control
Meander Property
Rancho Other
Date of Survey 9/21/04

COORDINATES (Optional)

N. _____
E. _____
Zone _____ NAD27 NAD83
NAD83 Epoch _____
Elev. _____
Vert. Datum: NGVD29 NAVD88
Meas. Units: Metric Imperial

Corner - Left as found Found and tagged Established Reestablished Rebuilt

Identification and type of corner found: Evidence used to identify or procedure used to establish or reestablish the corner:

Found four (4) standard City Monuments along Carrera Drive, measurements between agree with record data

A description of the physical condition of the monument as found and as set or reset: Set Lot Corners of Lots 31 and 32 per record dimensions.

SURVEYOR'S STATEMENT

This Corner Record was prepared by me or under my direction in conformance with

the Land Surveyor's Act on September 22, 2004

Signed Darrin E Jackson P.L.S or R.C.E. No. PLS 7251



COUNTY SURVEYOR'S STATEMENT

This Corner Record was received OCTOBER 24, 2004

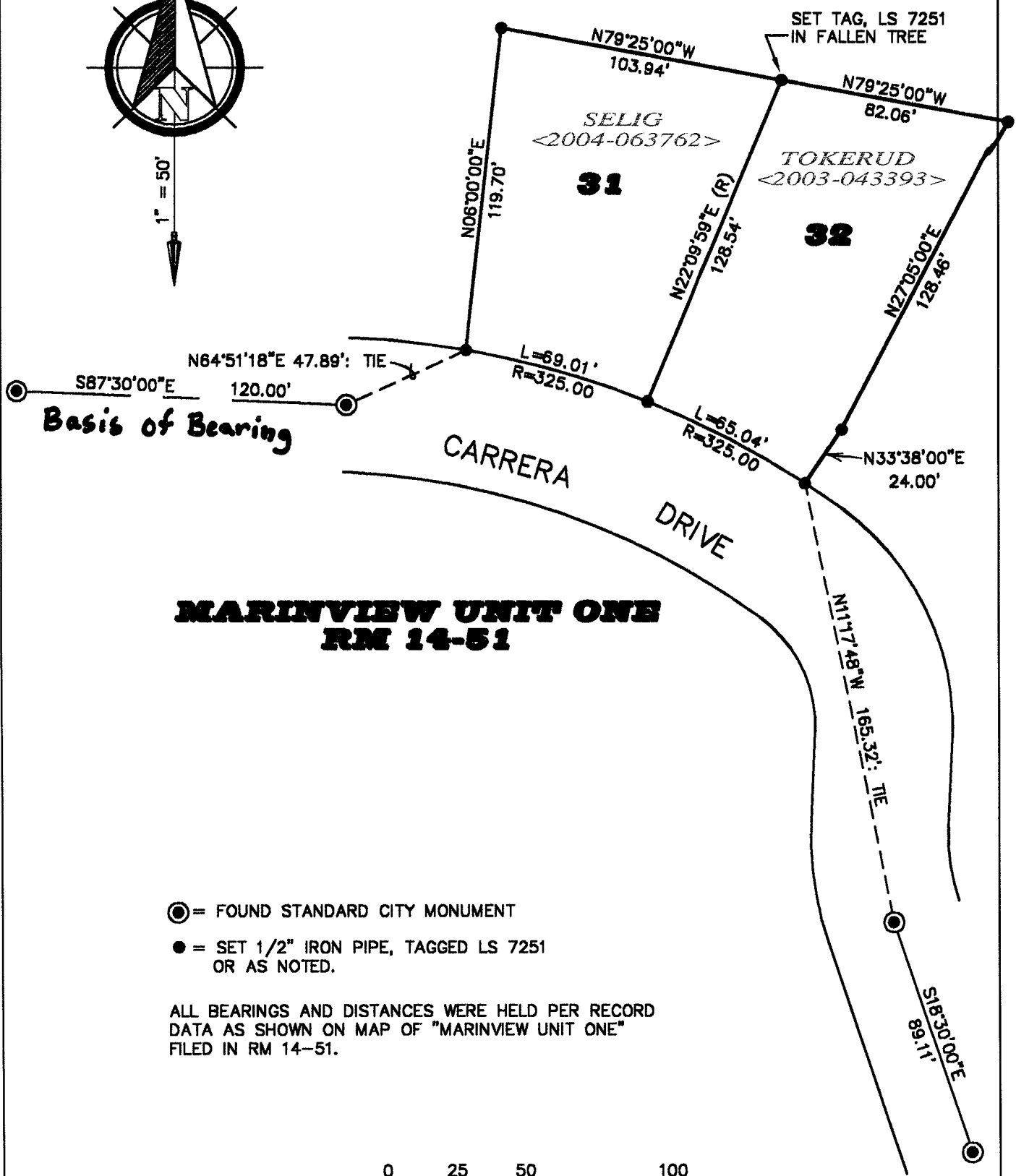
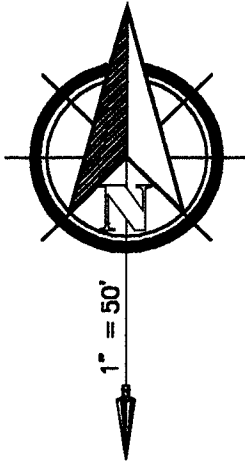
and examined and filed DECEMBER 6, 2004

Signed [Signature] P.L.S or R.C.E. No. 7128

Title COUNTY SURVEYOR



County Surveyor's Comment _____



**MARINVIEW UNIT ONE
RM 14-51**

- ⊙ = FOUND STANDARD CITY MONUMENT
- = SET 1/2" IRON PIPE, TAGGED LS 7251 OR AS NOTED.

ALL BEARINGS AND DISTANCES WERE HELD PER RECORD DATA AS SHOWN ON MAP OF "MARINVIEW UNIT ONE" FILED IN RM 14-51.

