

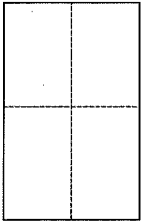
CORNER RECORD

Document Number APN 200-234-02

City of Mill Valley

County of Marin, California

Brief Legal Description Lot 2, Marinview Unit One, 14 R.M. 51



CORNER TYPE

Government Corner Control

Meandered Property

Rancho Other

Date of Survey 10/29/13

COORDINATES (Optional)

N. _____

E. _____

Zone _____ NAD27 NAD83

NAD83 Epoch _____

Elev. _____

Vert. Datum: NGVD29 NAVD88

Meas. Units: Metric Imperial

Corner - Left as found Found and tagged Established Reestablished Rebuilt

Identification and type of corner found: Evidence used to identify or procedure used to establish or reestablish the corner:

Standard street monuments per 14 R.M. 51 were found in record position and used to reestablish the location of Lot 2 of said map.

A description of the physical condition of the monument as found and as set or reset: (1) Rivet & Brass tag L.S.7237, (4) 1/2" iron pipes L.S.7237

SURVEYOR'S STATEMENT

This Corner Record was prepared by me or under my direction in conformance with the Land Surveyor's Act on Nov. 6, 2013

Signed Michael E. Ford P.L.S. or R.C.E. No. 7237



COUNTY SURVEYOR'S STATEMENT

This Corner Record was received NOVEMBER 12, 2013

and examined and filed JANUARY 22, 2014

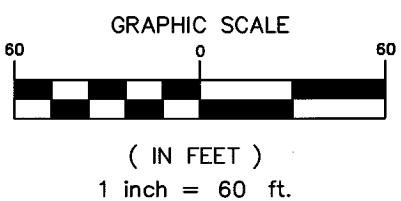
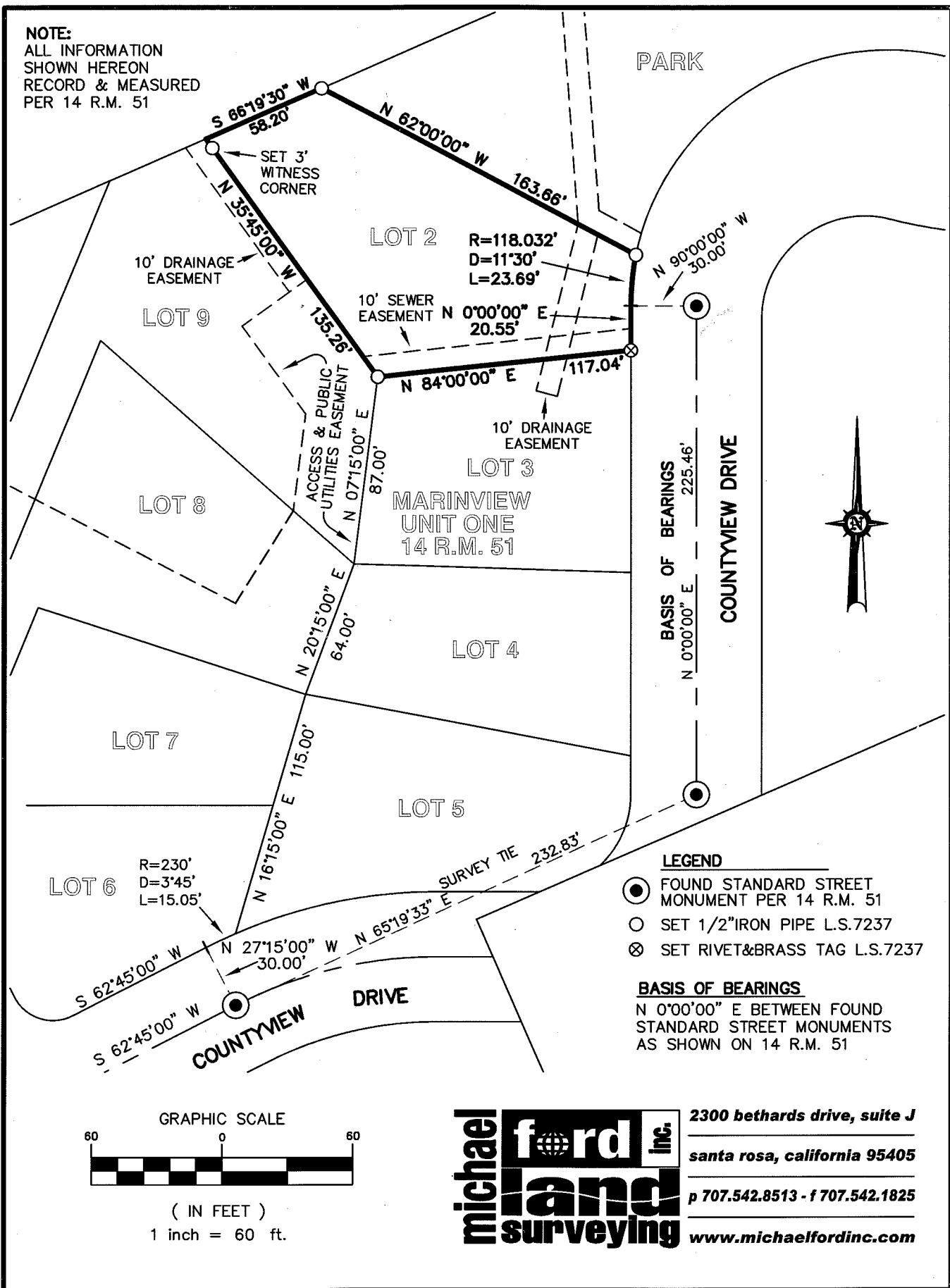
Signed Richard G. Simonitch P.L.S. or R.C.E. No. 7821

Title DEPUTY CO. SURV.



County Surveyor's Comment

NOTE:
 ALL INFORMATION
 SHOWN HEREON
 RECORD & MEASURED
 PER 14 R.M. 51



michael ford inc.
land surveying

2300 bethards drive, suite J
 santa rosa, california 95405
 p 707.542.8513 - f 707.542.1825
 www.michaelfordinc.com