

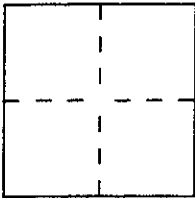
CORNER RECORD

Document Number 200-231-05

City of MILL VALLEY

County of MARIN, California

Brief Legal Description LOT 5 12 RM 77



CORNER TYPE

Government Corner Control
 Meander Property
 Rancho Other
 Date of Survey 6/24/98

COORDINATES (Optional)

N. _____
 E. _____
 Zone _____ Datum _____
 Elev. _____

Corner — Left as found Found and tagged Established Reestablished Rebuilt

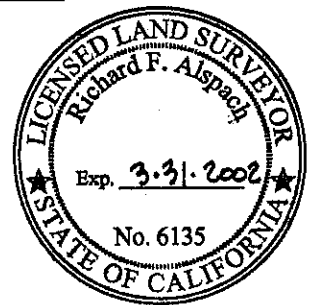
Identification and type of corner found: Evidence used to identify or procedure used to establish or reestablish the corner:
FOUND ORIGINAL STANDARD STREET MONUMENTS, BRASS PIN IN CONCRETE, AND SET WESTERLY FRONT CORNER, ANGLE POINT, AND WESTERLY LINE POINTS USING RECORD DIMENSIONS AND BEARINGS FROM FOUND ORIGINAL MONUMENTS PER 12 RM 77

A description of the physical condition of the monument as found and as set or reset:
SET 1/2" REBAR W/ PLASTIC CAP STAMPED "LS 6135" (CORNER, ANGLE PT. & LINE PT.)
SET TACK & BRASS TACK STAMPED "LS 6135" (LINE PT. ON FENCE)

SURVEYOR'S STATEMENT

This Corner Record was prepared by me or under my direction in conformance with the Land Surveyors' Act on JULY 12 1998.

Signed Richard F. Alspach L.S. or R.C.E. Number 6135



COUNTY SURVEYOR'S STATEMENT

This Corner Record was received JULY 24 1998 and examined and filed AUGUST 3 1998.

Signed John M. Woolley Title DEPUTY



County Surveyor's Comment _____

CC-PLOT output, date: 06-29-1998, time: 10:36:19 AM, FILE: BUSA290.CCC

PLOT SCALE: 1 inch = 20 feet
NORTH IS ROTATED 14.28 DEGREES CLOCKWISE.

N 84° 47' 30" E 87.270
BASIS OF BEARINGS

{ FOUND STANDARD STREET MONUMENTS
PIN IN CONCRETE

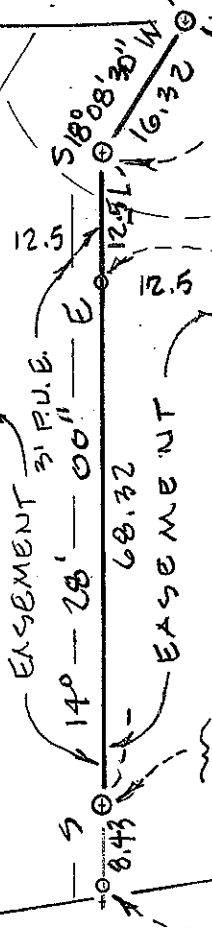


E N T E R P R I S E
C O M M E R C I A L C O U R S E (WIDTH VARIES)

116: 5520 11' 14" E 72.54
CALCULATED RECORD TIE

APN 200-231-06

LOT 6



{ SET 1/2" REBAR & CAP "LS6135"
@ PROPERTY LINE CORNERS
20' RADIUS ANCHOR EASEMENT

SET NAIL & TAG "LS6135" ON FENCE
PROPERTY SIDELINE

LOT 5

APN 200-231-05

{ SET 1/2" REBAR & CAP "LS6135"
ON PROPERTY SIDELINE

SET NAIL & TAG "LS6135" ON FENCE
PROPERTY SIDELINE

POINTS OFF PAPER: NONE