

CORNER RECORD

Document Number APN 200-231-04
County of Marin, California

Brief Legal Description: Lot 4 "Map of Tennessee Valley Homes Unit 1" recorded in Book 12 of Record Maps at Page 77, Marin County Records.

CORNER TYPE

COORDINATES

(Optional)

Government Corner
Meander
Rancho
Date of Survey : June 12, 2008

Control
Property
Other

N. _____
E. _____
Zone _____ Datum _____
Elev. _____

Corner --Left as found Found and tagged Established Reestablished Rebuilt

Identification and type of corner found: Evidence used to identify or procedure used to establish or reestablish the corner.

This survey is based upon found monuments shown on that map entitled, "Map of Tennessee Valley Homes Unit 1" recorded in Book 12 of Record Maps at Page 77, Marin County Records.

A Description of the physical condition of the monument as found and as set or reset.

See Sheet two.

SURVEYOR'S STATEMENT

This Corner Record was prepared by me or under my direction in conformance with the Professional Land Surveyor's Act on June 30, 2008

Signed *Linda Anne Carruthers* P.L.S. 7053



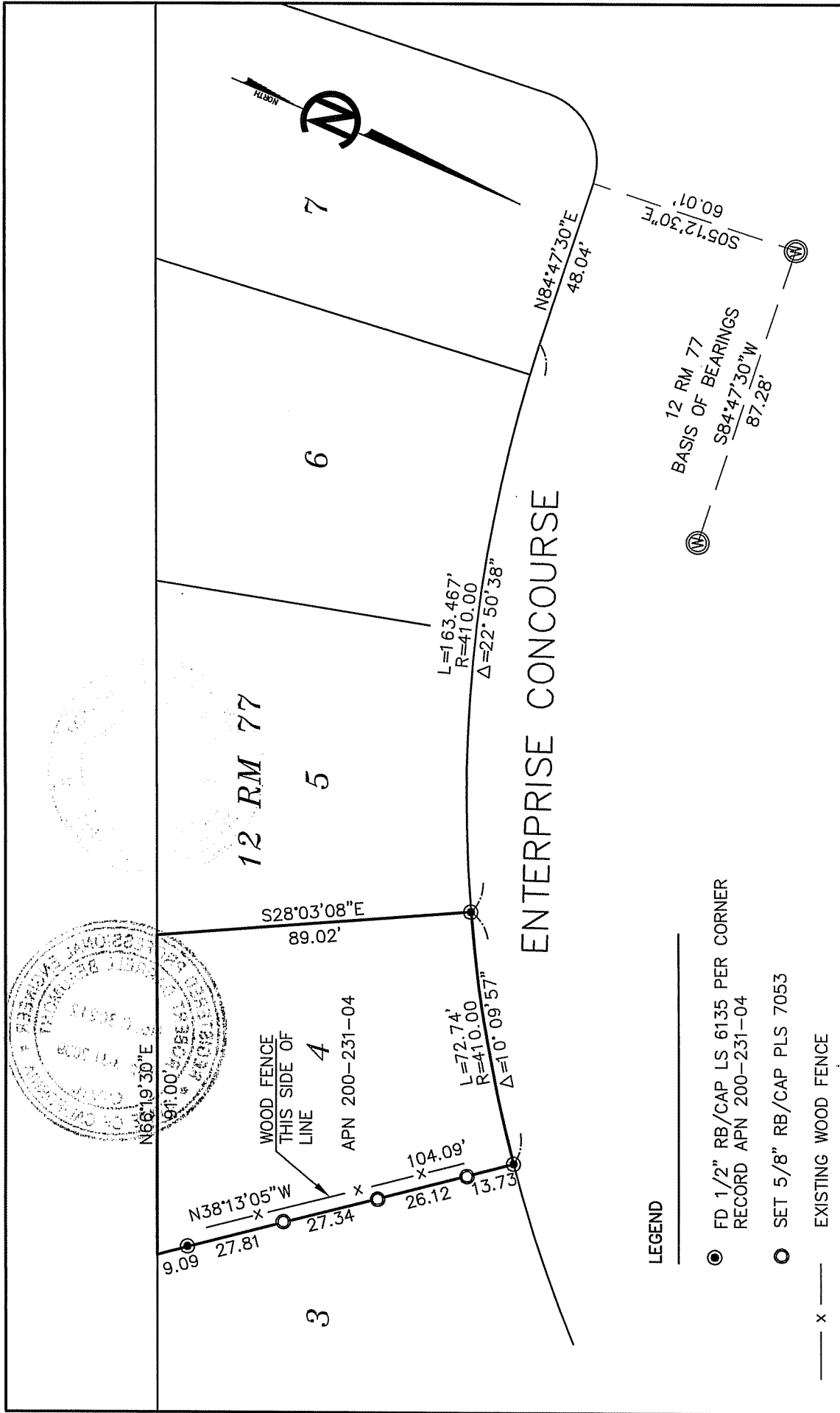
COUNTY SURVEYOR'S STATEMENT

This Corner Record was received JULY 7, 2008 and examined and filed JULY 31, 2008.

Signed *[Signature]* Title Deputy County Surveyor



County Surveyor's Comments _____



BOUNDARY SURVEY
 307 ENTERPRISE CONCOURSE
 MILL VALLEY, CALIFORNIA

LINDA A. CARRUTHERS & ASSOCIATES
 2015 BRIDGEWAY, STE. 301D
 SAUSALITO, CA 94965

SCALE 1"=40'
 JOB NO. 08-663
 DATE JUNE 2008
 APN 200-231-0