

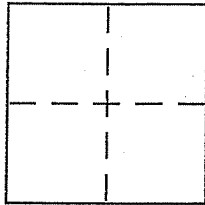
CORNER RECORD

Document Number APN 200-231-02 T007

City of MILL VALLEY

County of MARIN, California

Brief Legal Description SOUTHERLY LINE 12 RM 77 M.C.R.



CORNER TYPE

Government Corner Control
Meander Property
Rancho Other
Date of Survey JULY 21, 2011

COORDINATES (Optional)

N. _____
E. _____
Zone _____ NAD27 NAD83
NAD83 Epoch _____
Elev. _____
Vert. Datum: NGVD29 NAVD88
Meas. Units: Metric Imperial

Corner - Left as found Found and tagged Established Reestablished Rebuilt

Identification and type of corner found: Evidence used to identify or procedure used to establish or reestablish the corner:

FOUND ORIGINAL STANDARD STREET MONUMENTS WITH BRASS PIN IN CONCRETE PER 12 RM 77

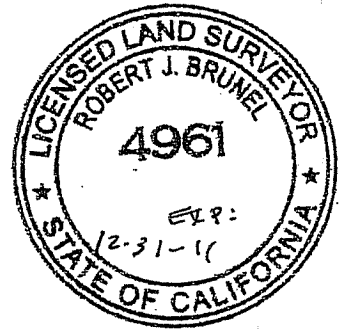
A description of the physical condition of the monument as found and as set or reset:

SET 5/8" REBAR WITH PLASTIC CAP, LS 4961

SURVEYOR'S STATEMENT

This Corner Record was prepared by me or under my direction in conformance with the Land Surveyor's Act on JULY 22 2011

Signed Robert J. Brunel P.L.S or R.C.E. No. 4961



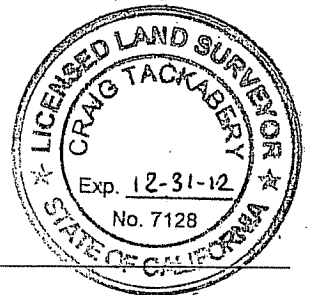
COUNTY SURVEYOR'S STATEMENT

This Corner Record was received AUGUST 10, 2011

and examined and filed SEPTEMBER 6, 2011

Signed [Signature] P.L.S or R.C.E. No. 7128

Title COUNTY SURVEYOR

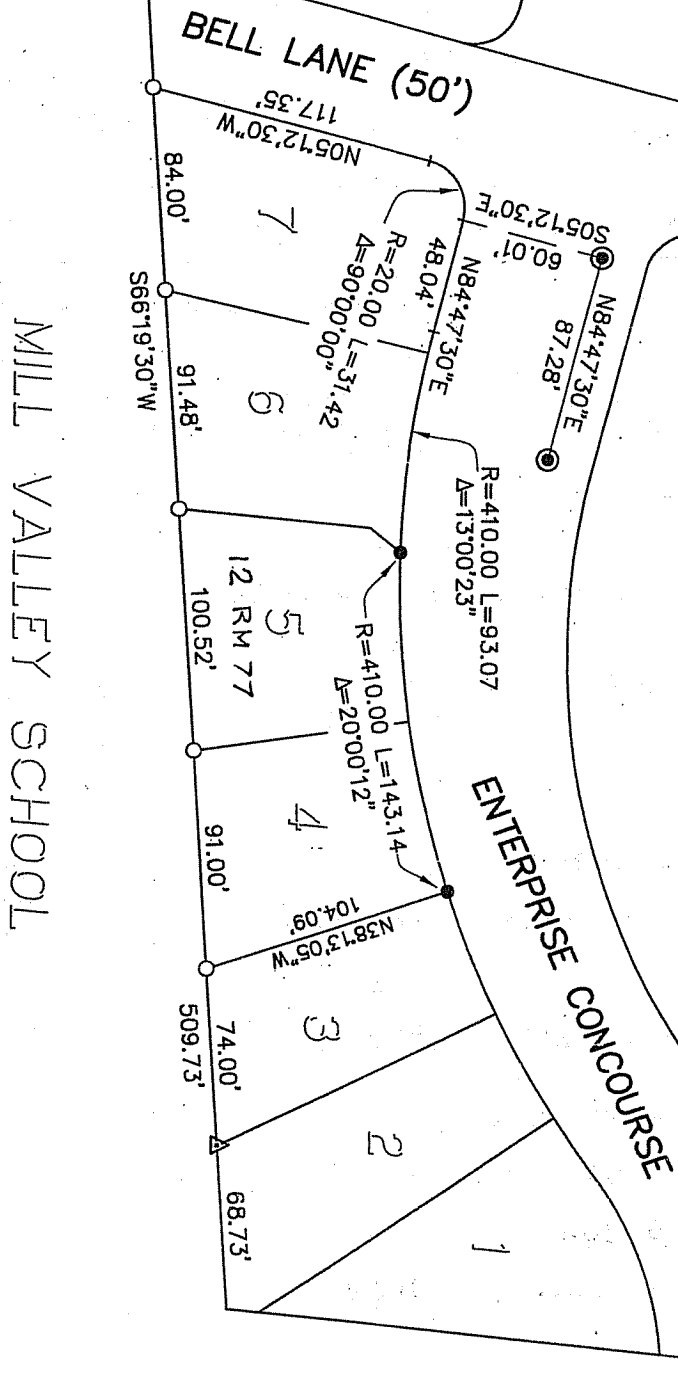


County Surveyor's Comment _____

- LEGEND**
- ⊙ FOUND CONCRETE MONUMENT PER (12 RM 77)
 - FOUND REBAR WITH CAP, LS 6135 PER CR'S ON FILE
 - ▲ FOUND 3/4" IRON PIPE WITH TAG, LS 5296 CR ON FILE
 - SET 5/8" REBAR WITH PLASTIC CAP, LS 4961



CORNER RECORD
 SOUTHERLY LINE OF THE MAP OF
 TENNESSEE VALLEY HOMES UNIT ONE (12 RM 77)
 MILL VALLEY, MARIN COUNTY, CALIFORNIA
 JULY 21, 2011 SCALE: 1" = 80'



MILL VALLEY SCHOOL

MORAN ENGINEERING
 BERKELEY, CALIFORNIA
 TAM VALLEY CR:DWG JOB NO. 10-7846