

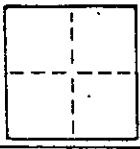
CORNER RECORD

1075

COUNTY OF MARIN T. _____ R. _____ MERIDIAN _____ CALIFORNIA

CORNER TYPE: GOVT. CORNER MEANDER RANCHO CONTROL OTHER

CORNER IDENTIFICATION — DATE OF VISIT 10-25 1989



A.P. # 200-181-02

CORNER — LEFT AS FOUND FOUND AND TAGGED REESTABLISHED OBLITERATED CORNER RESULT

PHYSICAL DESCRIPTION OF CORNER FOUND; EVIDENCE AND METHOD USED TO IDENTIFY OR REESTABLISH

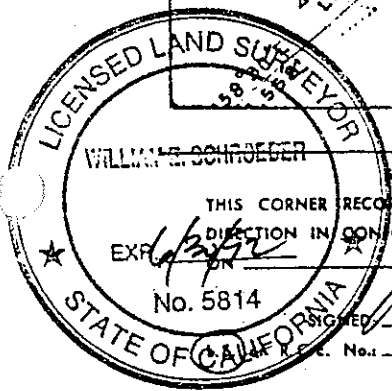
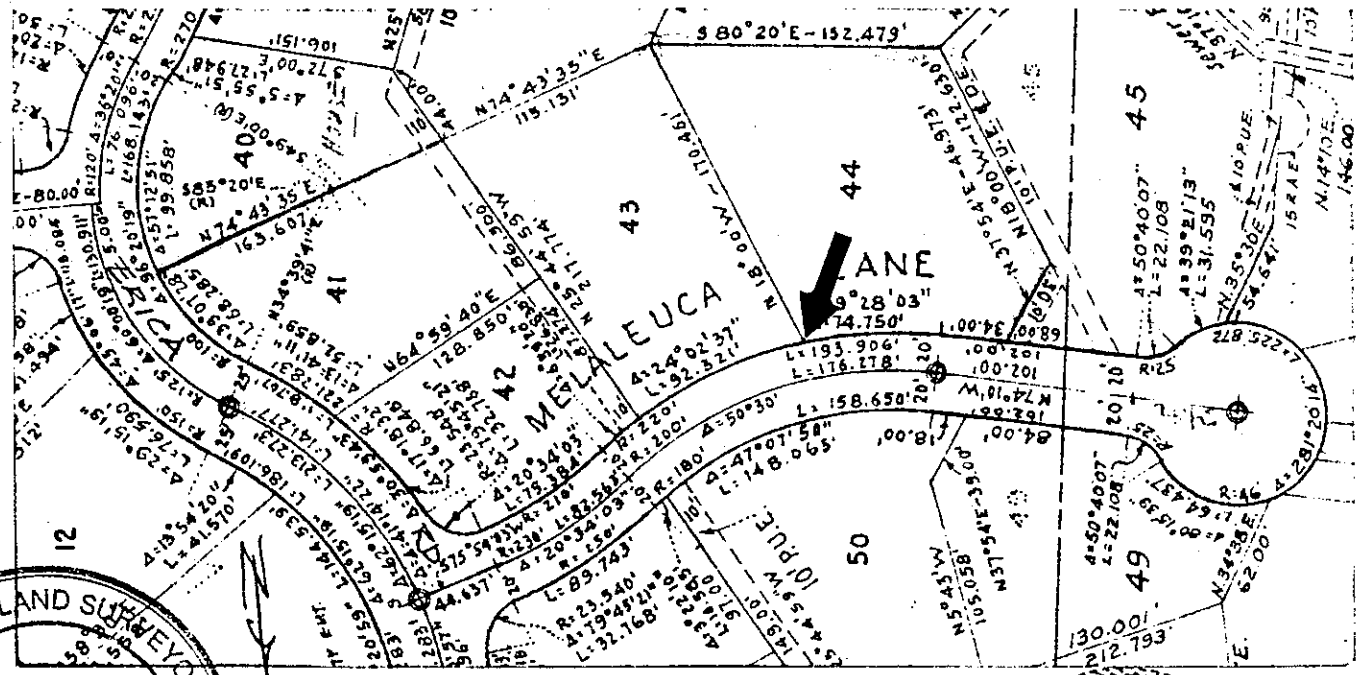
BASED ON FOUND MONUMENTS AS SHOWN ON "MAP OF PARK HILL, UNIT 1", FILED IN BOOK 11 OF MAPS AT PAGE 61, MARIN COUNTY RECORDS

PHYSICAL DESCRIPTION OF MONUMENTS REBUILT OR PERPETUATED

SET 3/4" I.P. WITH PLASTIC CAP, TAG LG 5814

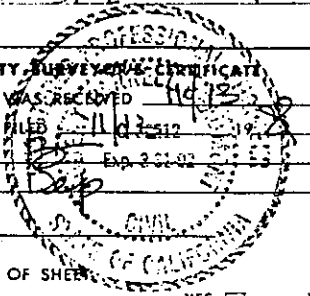
CALIFORNIA COORDINATE SYSTEM ORDER: FIRST SECOND THIRD
STATIONS USED: NGS (USC & GS) STATE COUNTY OTHER STATION _____ STATION _____
ZONE _____ ELEVATION _____ NORTHINGS (Y) _____ EASTINGS (X) _____

SKETCH: (Include reference tie or witness points, remarks and topo of area)



SURVEYOR'S CERTIFICATE
THIS CORNER RECORD WAS PREPARED BY ME OR UNDER MY DIRECTION IN CONFORMANCE WITH THE LAND SURVEYORS ACT
EXP. 10/25/89
No. 5814
Signed: William E. Schneider
No. 5814

COUNTY SURVEYOR'S CERTIFICATE
THE CORNER RECORD WAS RECEIVED AND EXAMINED AND FILED 11/13/89
BY: [Signature] Exp. 2/28/91
TITLE: [Signature]
DOCUMENT No. _____
STATEMENT ON BACK OF SHEET: YES NO

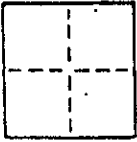


SEAL

CORNER RECORD

2 of 5

COUNTY OF MARIN T. _____ R. _____ MERIDIAN _____ CALIFORNIA
CORNER TYPE: GOVT. CORNER MEANDER RANCHO CONTROL OTHER
CORNER IDENTIFICATION — DATE OF VISIT 10-25 1989



A.P. #200-181-02

CORNER — LEFT AS FOUND FOUND AND TAGGED REESTABLISHED OBLITERATED CORNER REBUILT

PHYSICAL DESCRIPTION OF CORNER FOUND; EVIDENCE AND METHOD USED TO IDENTIFY OR REESTABLISH

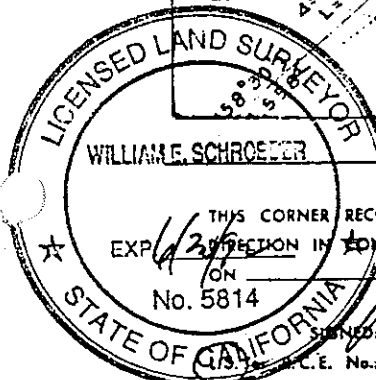
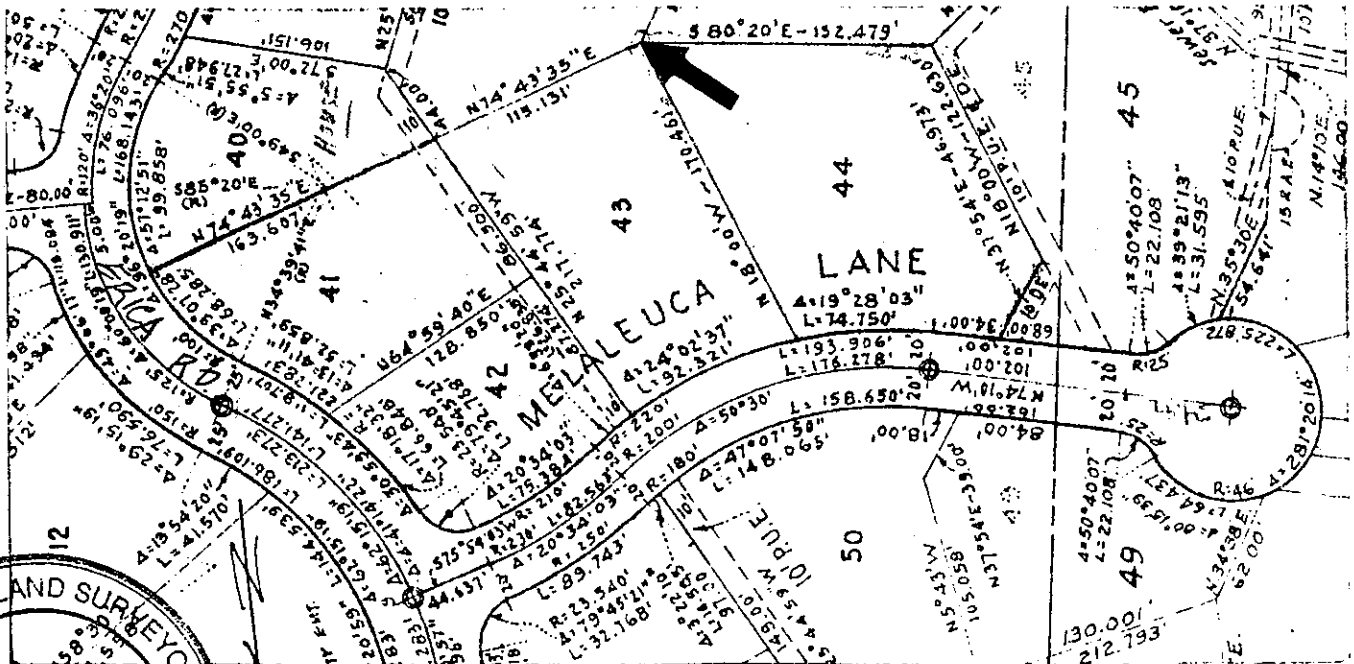
BASED ON FOUND MONUMENTS AS SHOWN ON "MAP OF PARK HILL,
UNIT 1", FILED IN BOOK 11 OF MAPS AT PAGE 61, MARIN COUNTY RECORDS

PHYSICAL DESCRIPTION OF MONUMENTS REBUILT OR PERPETUATED

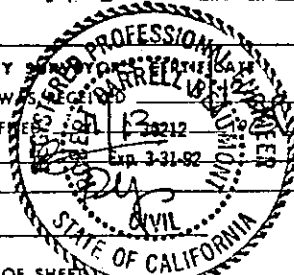
SET 3/4 " I.P. WITH PLASTIC CAP, TAG IS 5814

CALIFORNIA COORDINATE SYSTEM ORDER: FIRST SECOND THIRD
STATIONS USED: NGS (USC & GS) STATE COUNTY OTHER STATION _____ STATION _____
ZONE _____ ELEVATION _____ NORTHINGS (Y) _____ EASTINGS (X) _____

SKETCH: (Include reference tie or witness points, remarks and topo of area)



SURVEYOR'S CERTIFICATE
THIS CORNER RECORD WAS PREPARED BY ME OR UNDER MY
EXPRESSION IN CONFORMANCE WITH THE LAND SURVEYORS ACT
ON 10/25/89
No. 5814
SIGNED: William E. Schroeder
C.E. No. 5814



COUNTY MARIN
THE CORNER RECORD WAS RECEIVED AND EXAMINED AND FILED
BY: Robert J. Parrell Exp. 3-31-92
TITLE: _____
DOCUMENT No. _____
STATEMENT ON BACK OF SHEET YES NO

SEAL

CORNER RECORD

3045

COUNTY OF MARIN T. _____ R. _____ MERIDIAN CALIFORNIA
CORNER TYPE: GOVT. CORNER MEANDER RANCHO CONTROL OTHER
CORNER IDENTIFICATION — DATE OF VISIT 10-25 1989



A.P. #200-181-02

CORNER — LEFT AS FOUND FOUND AND TAGGED REESTABLISHED OBLITERATED CORNER REBUILT

PHYSICAL DESCRIPTION OF CORNER FOUND; EVIDENCE AND METHOD USED TO IDENTIFY OR REESTABLISH

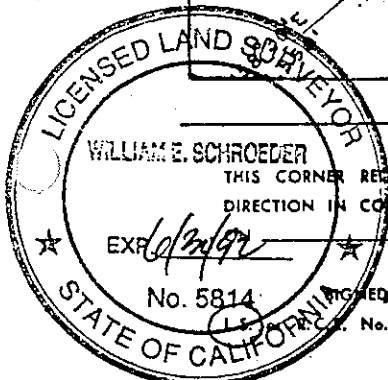
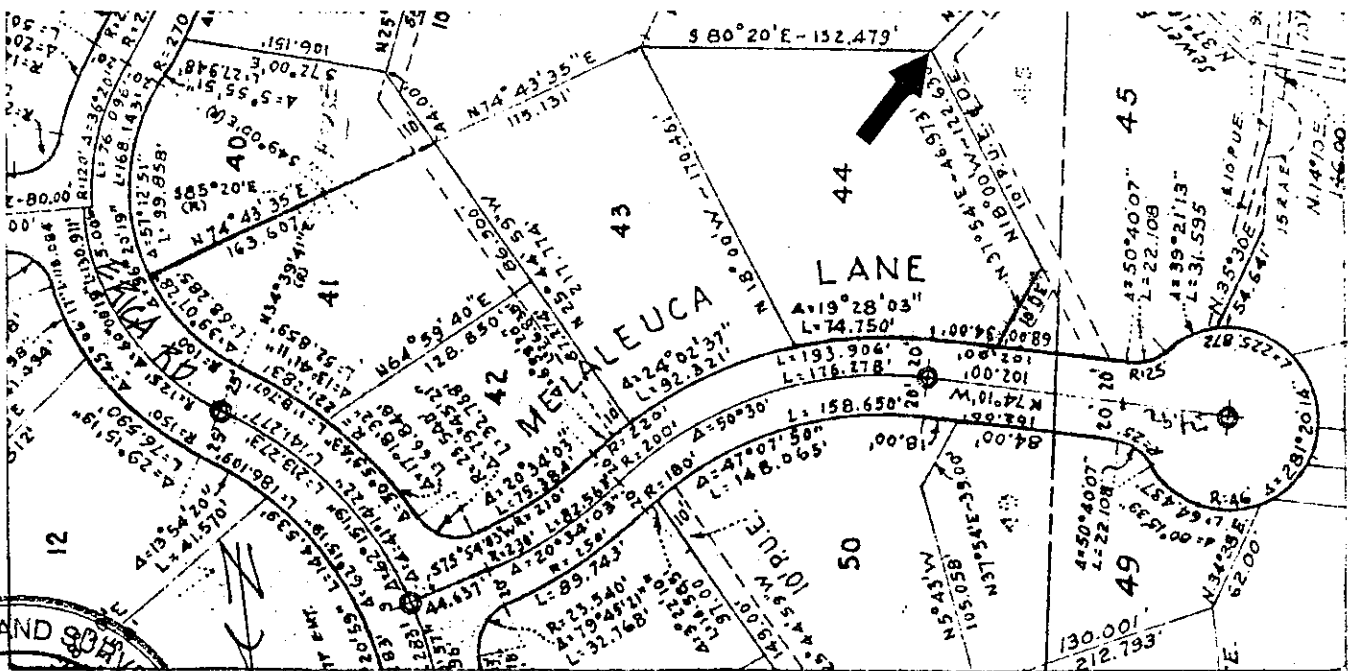
BASED ON FOUND MONUMENTS AS SHOWN ON "MAP OF PARK HILLS,
UNIT 1", FILED IN BOOK 11 OF MAPS AT PAGE 61, MARIN COUNTY RECORDS

PHYSICAL DESCRIPTION OF MONUMENTS REBUILT OR PERPETUATED

SET 3/4 " I.P. WITH PLASTIC CAP, TAG IS 5814

CALIFORNIA COORDINATE SYSTEM ORDER: FIRST SECOND THIRD
STATIONS USED: NGS (USC & GS) STATE COUNTY OTHER STATION _____ STATION _____
ZONE _____ ELEVATION _____ NORTHINGS (Y) _____ EASTINGS (X) _____

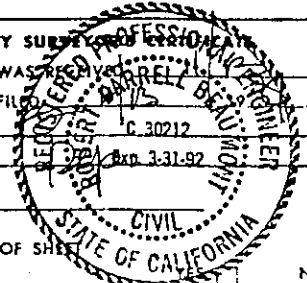
SKETCH: (Include reference tie or witness points, remarks and topo of area)



SURVEYOR'S CERTIFICATE
THIS CORNER RECORD WAS PREPARED BY ME OR UNDER MY
DIRECTION IN CONFORMANCE WITH THE LAND SURVEYORS ACT
1989
William E. Schroeder
No. 5814

SEAL

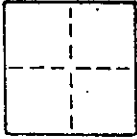
COUNTY SURVEYOR'S OFFICE
THE CORNER RECORD WAS RECHECKED BY _____ 1989
AND EXAMINED AND FILED
BY: _____ C. 30212
TITLE: _____ Exp 3-31-92
DOCUMENT No. _____
STATEMENT ON BACK OF SHEET _____ NO



CORNER RECORD

4 of 5

COUNTY OF MARIN T. _____ R. _____ MERIDIAN _____ CALIFORNIA
CORNER TYPE: GOVT. CORNER MEANDER RANCHO CONTROL OTHER
CORNER IDENTIFICATION - DATE OF VISIT 10-25 1989



A.P. #200-181-02

CORNER - LEFT AS FOUND FOUND AND TAGGED REESTABLISHED OBLITERATED CORNER REBUILT

PHYSICAL DESCRIPTION OF CORNER FOUND; EVIDENCE AND METHOD USED TO IDENTIFY OR REESTABLISH

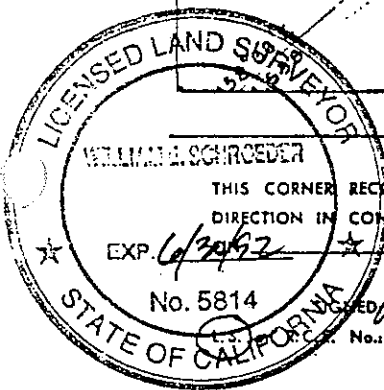
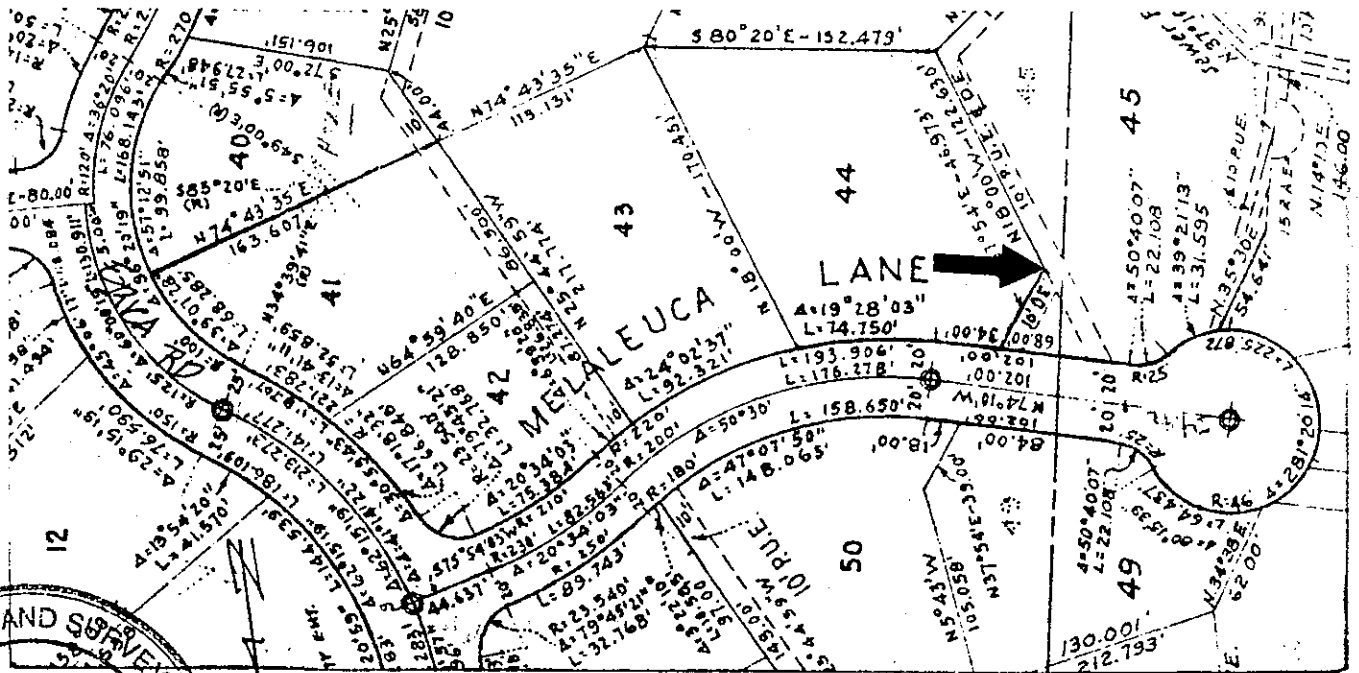
BASED ON FOUND MONUMENTS AS SHOWN ON "MAP OF PARK HILL,
UNIT 1", FILED IN BOOK 11 OF MAPS AT PAGE 61, MARIN COUNTY RECORDS

PHYSICAL DESCRIPTION OF MONUMENTS REBUILT OR PERPETUATED

SET LEAD AND TAG, L.S 5814

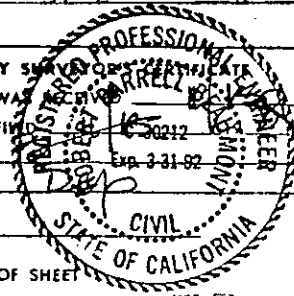
CALIFORNIA COORDINATE SYSTEM ORDER: FIRST SECOND THIRD
STATIONS USED: NGS (USC & GS) STATE COUNTY OTHER STATION _____ STATION _____
ZONE _____ ELEVATION _____ NORTHINGS (Y) _____ EASTINGS (X) _____

SKETCH: (Include reference tie or witness points, remarks and topo of area)



SURVEYOR'S CERTIFICATE
THIS CORNER RECORD WAS PREPARED BY ME OR UNDER MY
DIRECTION IN CONFORMANCE WITH THE LAND SURVEYORS ACT
EXP. 6/30/92
No. 5814
William Schroeder

COUNTY SURVEYOR'S CERTIFICATE
THE CORNER RECORD WAS EXAMINED AND FOUND
AND EXAMINED AND FOUND
BY: 100212
TITLE: 1389
DOCUMENT No. _____
STATEMENT ON BACK OF SHEET YES NO



SEAL

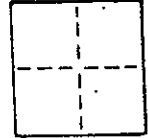
CORNER RECORD

5 OF 5

COUNTY OF MARIN T. _____ R. _____ MERIDIAN _____ CALIFORNIA

CORNER TYPE: GOVT. CORNER MEANDER RANCHO CONTROL OTHER

CORNER IDENTIFICATION - DATE OF VISIT 10-25 1989



A.P. #200-181-02

CORNER - LEFT AS FOUND FOUND AND TAGGED REESTABLISHED OBLITERATED CORNER REBUILT

PHYSICAL DESCRIPTION OF CORNER FOUND; EVIDENCE AND METHOD USED TO IDENTIFY OR REESTABLISH

BASED ON FOUND MONUMENTS AS SHOWN ON "MAP OF PARK HILL UNIT 1", FILED IN BOOK 11 OF MAPS AT PAGE 61, MARIN COUNTY RECORDS

PHYSICAL DESCRIPTION OF MONUMENTS REBUILT OR PERPETUATED

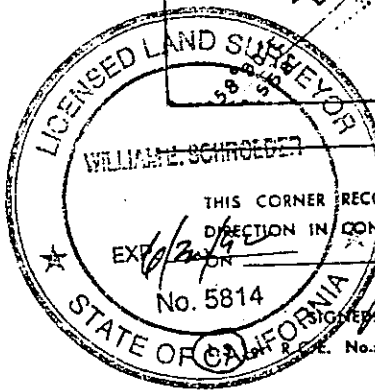
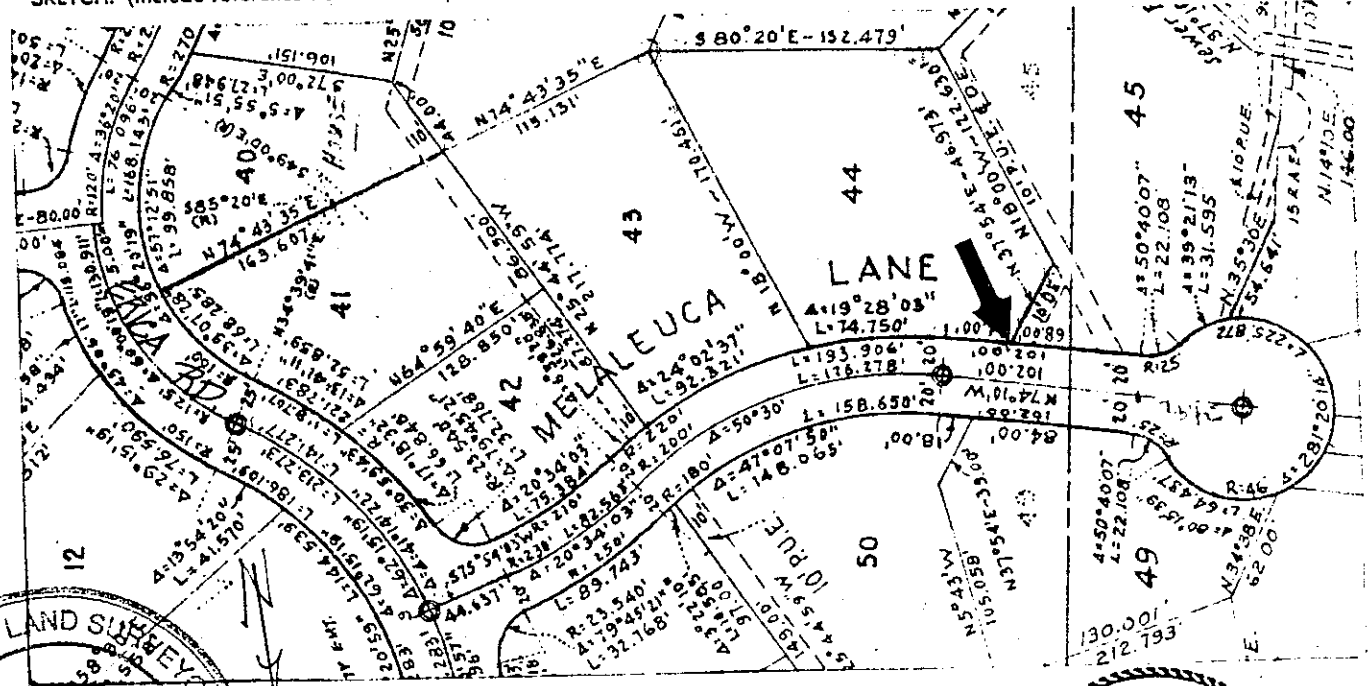
SET 3/4 " I.P. WITH PLASTIC CAP, TAG IS 5814

CALIFORNIA COORDINATE SYSTEM ORDER: FIRST SECOND THIRD

STATIONS USED: NGS (USC & GS) STATE COUNTY OTHER STATION _____

ZONE _____ ELEVATION _____ NORTHINGS (Y) _____ EASTINGS (X) _____

SKETCH: (Include reference tie or witness points, remarks and topo of area)



SURVEYOR'S CERTIFICATE

THIS CORNER RECORD WAS PREPARED BY ME OR UNDER MY DIRECTION IN CONFORMANCE WITH THE LAND SURVEYORS ACT

EXP. 12/31/91

No. 5814

SIGNED: William Schroeder

FILE No.: 5814

SEAL

COUNTY SURVEYOR'S CERTIFICATE

THE CORNER RECORD WAS EXAMINED AND FOUND CORRECT

AND EXAMINED AND FILED

BY: US 12-30-92

TITLE: _____

DOCUMENT No. _____

STATEMENT ON BACK OF SHEET YES NO

