

### CORNER RECORD

COUNTY OF Marin T. 1 N R. 6 W Mt. Diablo MERIDIAN CALIFORNIA

CORNER TYPE: GOVT. CORNER  MEANDER  RANCHO  CONTROL  OTHER

CORNER IDENTIFICATION - DATE OF VISIT Oct. 4, 1987

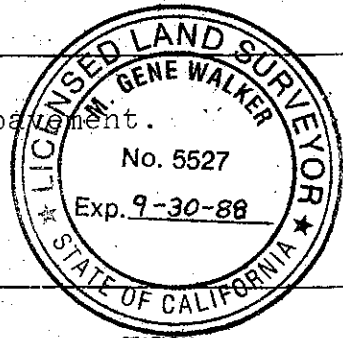


S.E. corner of the flag portion of Lot 38, Park Hill I, 11 Maps 61, at intersection of westerly property line of Erica Road. AP # 200-161-26

CORNER - LEFT AS FOUND  FOUND AND TAGGED  REESTABLISHED OBLITERATED CORNER  REBUILT

PHYSICAL DESCRIPTION OF CORNER FOUND, EVIDENCE AND METHOD USED TO IDENTIFY OR REESTABLISH  
 No evidence of original corner was found. I used the county monuments found in Erica Road to re-establish the corner.  
 See sketch below.

PHYSICAL DESCRIPTION OF MONUMENTS, REBUILT OR PERPETUATED  
 Pavement nail with 1 1/4" metal shiner set in asphalt pavement.



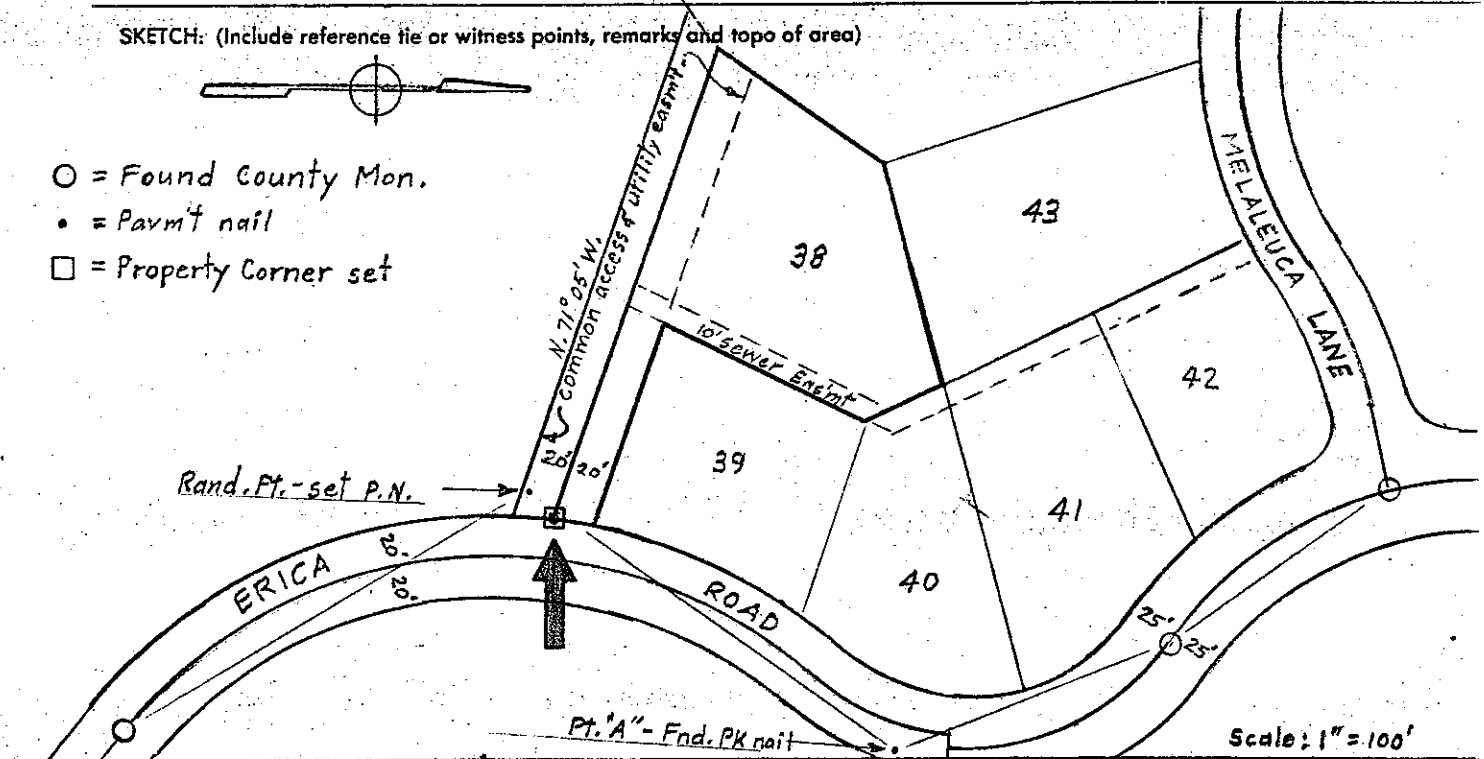
CALIFORNIA COORDINATE SYSTEM ORDER: FIRST  SECOND  THIRD

STATIONS USED: NGS (USC & GS)  STATE  COUNTY  OTHER  STATION \_\_\_\_\_ STATION \_\_\_\_\_

ZONE \_\_\_\_\_ ELEVATION \_\_\_\_\_ NORTHINGS (Y) \_\_\_\_\_ EASTINGS (X) \_\_\_\_\_

SKETCH: (Include reference tie or witness points, remarks and topo of area)

- = Found County Mon.
- = Pavmt nail
- = Property Corner set



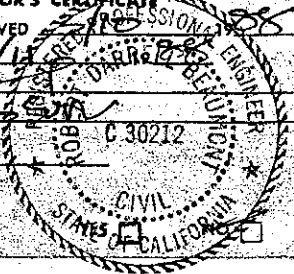
**SURVEYOR'S CERTIFICATE**  
 THIS CORNER RECORD WAS PREPARED BY ME OR UNDER MY DIRECTION IN CONFORMANCE WITH THE LAND SURVEYORS ACT ON December 29, 1987

SIGNED: Milo Gene Walker  
 L.S. or R.C.E. No.: L.S. 5527

**COUNTY SURVEYOR'S CERTIFICATE**  
 THE CORNER RECORD WAS RECEIVED AND EXAMINED AND FILED 3/11/88 BY: ROB BROWN TITLE: DUP

DOCUMENT No. \_\_\_\_\_  
 STATEMENT ON BACK OF SHEET

EX-3185

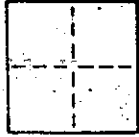


### CORNER RECORD

COUNTY OF Marin T. 1 N R. 6 W Mt. Diablo MERIDIAN CALIFORNIA

CORNER TYPE: GOVT. CORNER  MEANDER  RANCHO  CONTROL  OTHER

CORNER IDENTIFICATION - DATE OF VISIT Oct. 4, 1987



N.E. corner of the flag portion of Lot 38, Park Hill I, 11 Maps 61, at intersection of westerly property line of Erica Road. AP # 200-161-26

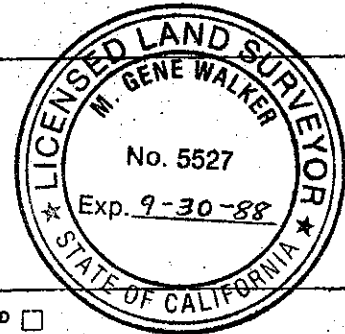
CORNER - LEFT AS FOUND  FOUND AND TAGGED  REESTABLISHED OBLITERATED CORNER  REBUILT

PHYSICAL DESCRIPTION OF CORNER FOUND; EVIDENCE AND METHOD USED TO IDENTIFY OR REESTABLISH

No evidence of original corner was found. I used the county monuments found in Erica Road to re-establish the corner. See the sketch below.

PHYSICAL DESCRIPTION OF MONUMENTS REBUILT OR PERPETUATED

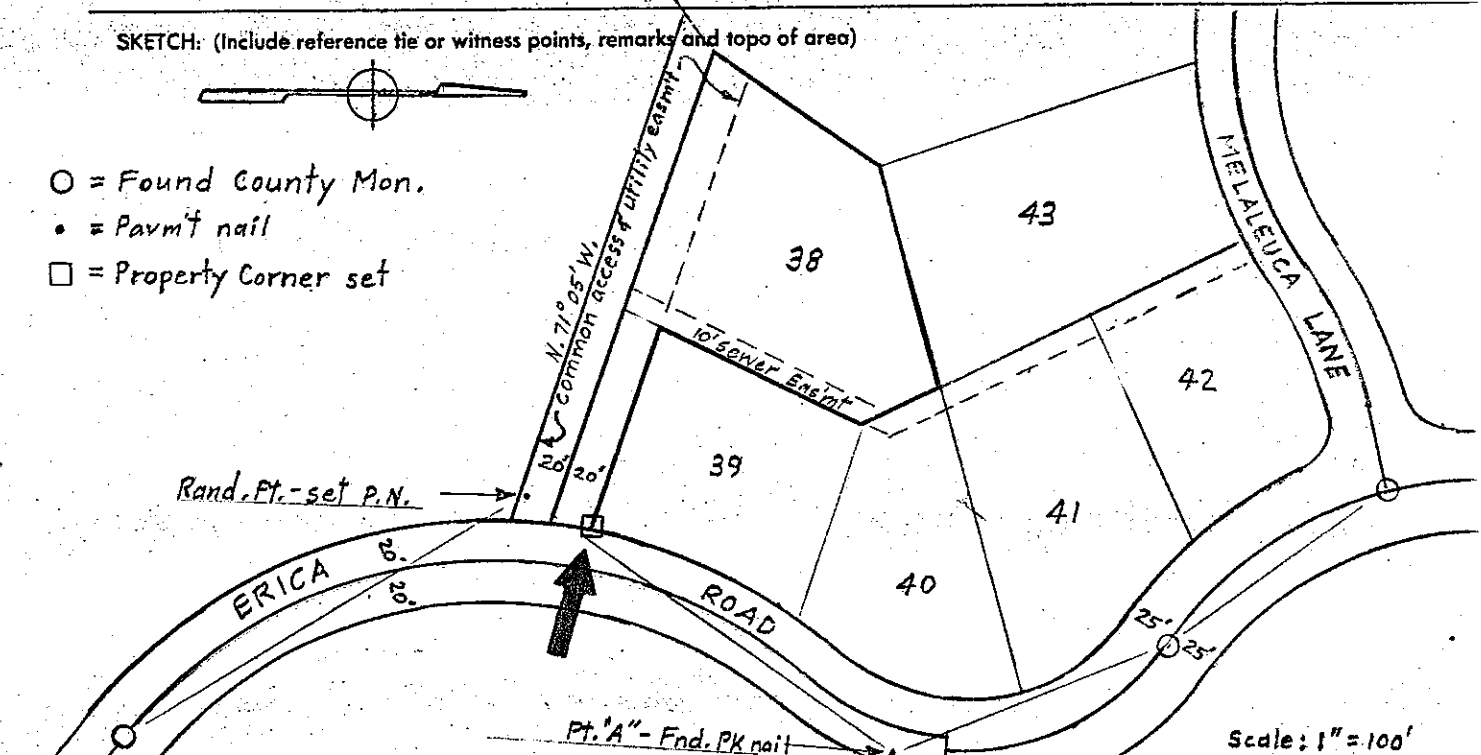
1" iron pipe with L.S. tag #5527.



CALIFORNIA COORDINATE SYSTEM ORDER: FIRST  SECOND  THIRD   
STATIONS USED: NGS (USC & GS)  STATE  COUNTY  OTHER  STATION \_\_\_\_\_ STATION \_\_\_\_\_  
ZONE \_\_\_\_\_ ELEVATION \_\_\_\_\_ NORTHINGS (Y) \_\_\_\_\_ EASTINGS (X) \_\_\_\_\_

SKETCH: (Include reference tie or witness points, remarks and topo of area)

- = Found County Mon.
- = Pavmt nail
- = Property Corner set



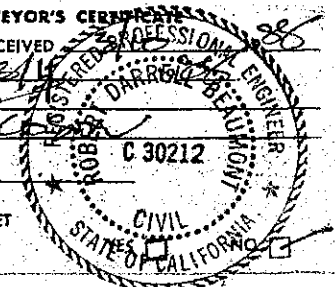
**SURVEYOR'S CERTIFICATE**  
THIS CORNER RECORD WAS PREPARED BY ME OR UNDER MY DIRECTION IN CONFORMANCE WITH THE LAND SURVEYORS ACT ON December 29, 1987

SIGNED: Milo Gene Walker  
L.S. or R.C.E. No.: L.S. 5527

SEAL

**COUNTY SURVEYOR'S CERTIFICATE**  
THE CORNER RECORD WAS RECEIVED AND EXAMINED AND FILED BY: REP  
TITLE: REPRODUCTION

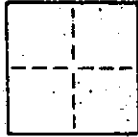
DOCUMENT No. \_\_\_\_\_  
STATEMENT ON BACK OF SHEET



ex 3-31-86

### CORNER RECORD

COUNTY OF Marin T. 1 N R. 6 W Mt. Diablo MERIDIAN CALIFORNIA  
 CORNER TYPE: GOVT. CORNER  MEANDER  RANCHO  CONTROL  OTHER   
 CORNER IDENTIFICATION - DATE OF VISIT Oct. 4, 1987



Intersection of the easterly side of Lot 38 and the northerly side of the 20' common access easement, all in Park Hill I, 11 Maps 61. AP # 200-161-26

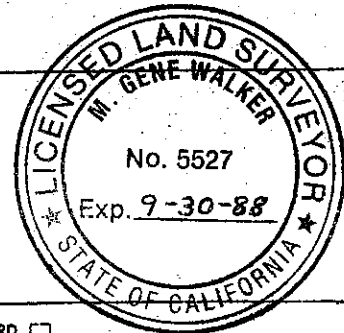
CORNER - LEFT AS FOUND  FOUND AND TAGGED  REESTABLISHED OBLITERATED CORNER  REBUILT

PHYSICAL DESCRIPTION OF CORNER FOUND; EVIDENCE AND METHOD USED TO IDENTIFY OR REESTABLISH

No evidence of original corner was found. I used the county monuments found in Erica Road to re-establish the corner. See the sketch below.

PHYSICAL DESCRIPTION OF MONUMENTS, REBUILT OR PERPETUATED

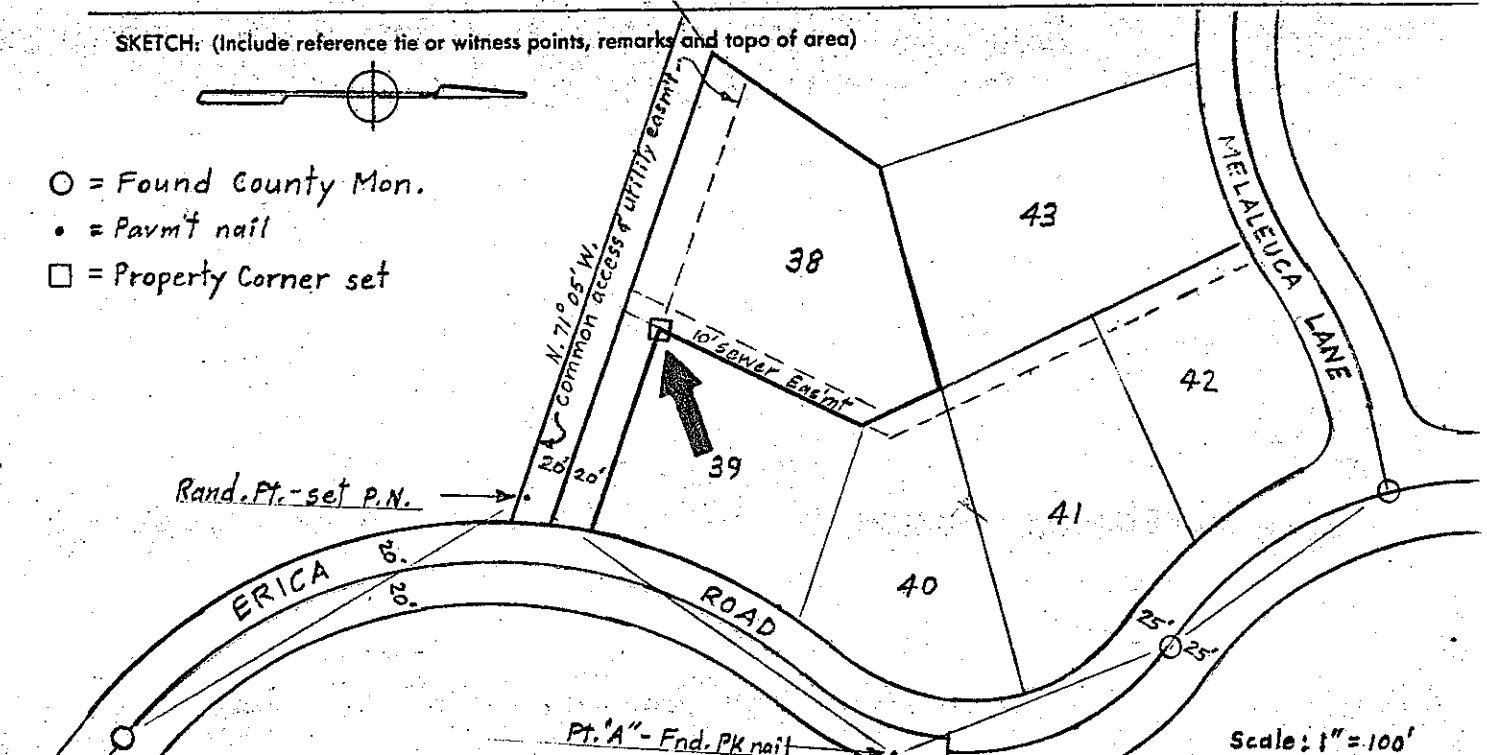
1" iron pipe with L.S. tag #5527.



CALIFORNIA COORDINATE SYSTEM ORDER: FIRST  SECOND  THIRD   
 STATIONS USED: NGS (USC & GS)  STATE  COUNTY  OTHER  STATION \_\_\_\_\_ STATION \_\_\_\_\_  
 ZONE \_\_\_\_\_ ELEVATION \_\_\_\_\_ NORTHINGS (Y) \_\_\_\_\_ EASTINGS (X) \_\_\_\_\_

SKETCH: (Include reference tie or witness points, remarks and topo of area)

- = Found County Mon.
- = Paym't nail
- = Property Corner set

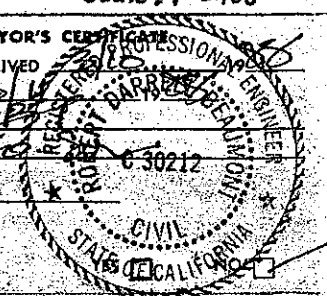


**SURVEYOR'S CERTIFICATE**  
 THIS CORNER RECORD WAS PREPARED BY ME OR UNDER MY DIRECTION IN CONFORMANCE WITH THE LAND SURVEYORS ACT ON December 29, 1987

SIGNED: Milo Gene Walker  
 L.S. or R.C.E. No.: L.S. 5527

SEAL

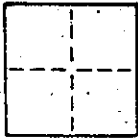
**COUNTY SURVEYOR'S CERTIFICATE**  
 THE CORNER RECORD WAS RECEIVED AND EXAMINED AND FILED BY: R. D. ...  
 TITLE: Dep. Co. ...  
 DOCUMENT No. \_\_\_\_\_  
 STATEMENT ON BACK OF SHEET



*EX-321-88*

### CORNER RECORD

COUNTY OF Marin T. 1 N R. 6 W Mt. Diablo MERIDIAN CALIFORNIA  
 CORNER TYPE: GOVT. CORNER  MEANDER  RANCHO  CONTROL  OTHER   
 CORNER IDENTIFICATION — DATE OF VISIT Oct. 4, 1987



Intersection of the westerly side of Lot 38, Park Hill I, 11 Maps 61, and the northerly side of the 20' common access easement. AP # 200-161-26

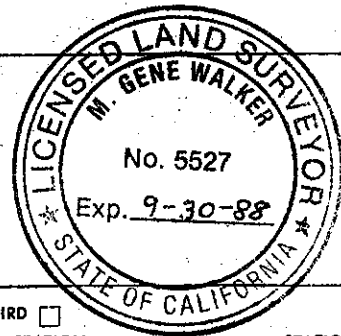
CORNER — LEFT AS FOUND  FOUND AND TAGGED  REESTABLISHED OBLITERATED CORNER  REBUILT

**PHYSICAL DESCRIPTION OF CORNER FOUND; EVIDENCE AND METHOD USED TO IDENTIFY OR REESTABLISH**

No evidence of original corner was found. I used the county monuments found in Erica Road to re-establish the corner. See the sketch below.

**PHYSICAL DESCRIPTION OF MONUMENTS REBUILT OR PERPETUATED**

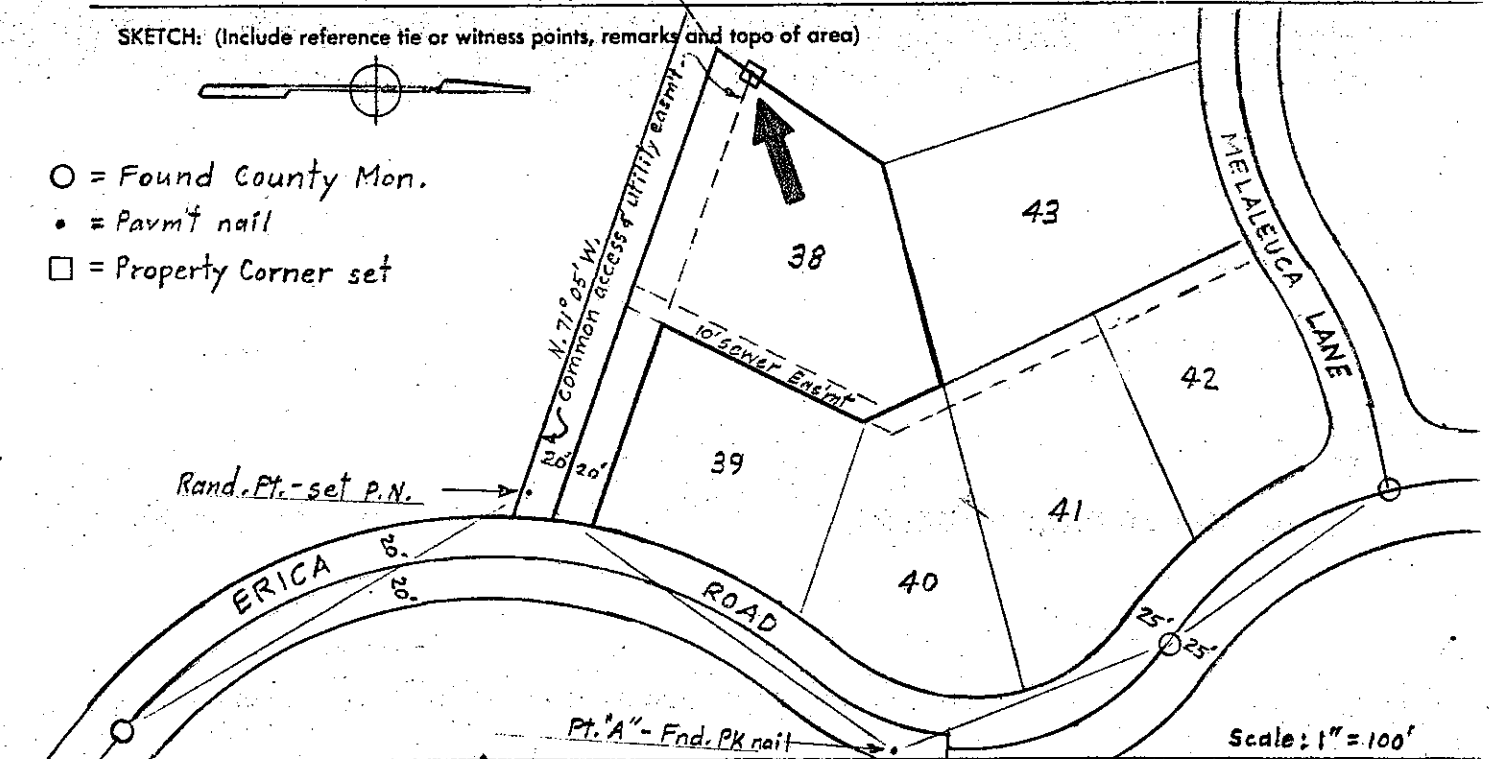
1" iron pipe with L.S. tag #5527.



CALIFORNIA COORDINATE SYSTEM ORDER: FIRST  SECOND  THIRD   
 STATIONS USED: NGS (USC & GS)  STATE  COUNTY  OTHER  STATION \_\_\_\_\_ STATION \_\_\_\_\_  
 ZONE \_\_\_\_\_ ELEVATION \_\_\_\_\_ NORTHINGS (Y) \_\_\_\_\_ EASTINGS (X) \_\_\_\_\_

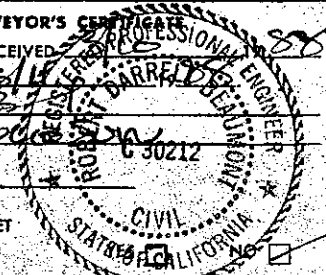
**SKETCH: (Include reference tie or witness points, remarks and topo of area)**

- = Found County Mon.
- = Pav't nail
- = Property Corner set



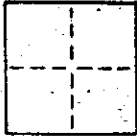
**SURVEYOR'S CERTIFICATE**  
 THIS CORNER RECORD WAS PREPARED BY ME OR UNDER MY DIRECTION IN CONFORMANCE WITH THE LAND SURVEYORS ACT ON December 29, 1987  
 SIGNED: Milo Gene Walker  
 L.S. or R.C.E. No.: L.S. 5527

**COUNTY SURVEYOR'S CERTIFICATE**  
 THE CORNER RECORD WAS RECEIVED AND EXAMINED AND FILED BY: DEPT. OF PUBLIC WORKS  
 TITLE: DEPT. OF PUBLIC WORKS  
 DOCUMENT No. \_\_\_\_\_  
 STATEMENT ON BACK OF SHEET  
 Ex 33188



### CORNER RECORD

COUNTY OF Marin T. 1 N R. 6 W Mt. Diablo MERIDIAN CALIFORNIA  
 CORNER TYPE: GOVT. CORNER  MEANDER  RANCHO  CONTROL  OTHER   
 CORNER IDENTIFICATION — DATE OF VISIT Oct. 4, 1987



S.W. corner of Lot 38, Park Hill I, 11 Maps 61.  
 AP # 200-161-26

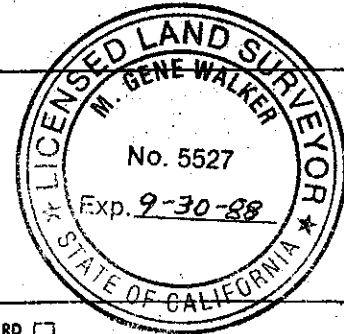
CORNER — LEFT AS FOUND  FOUND AND TAGGED  REESTABLISHED OBLITERATED CORNER  REBUILT

PHYSICAL DESCRIPTION OF CORNER FOUND; EVIDENCE AND METHOD USED TO IDENTIFY OR REESTABLISH

No evidence of original corner was found. I used the county monuments found in Erica Road to re-establish the corner.  
 See sketch below.

PHYSICAL DESCRIPTION OF MONUMENTS, REBUILT OR PERPETUATED

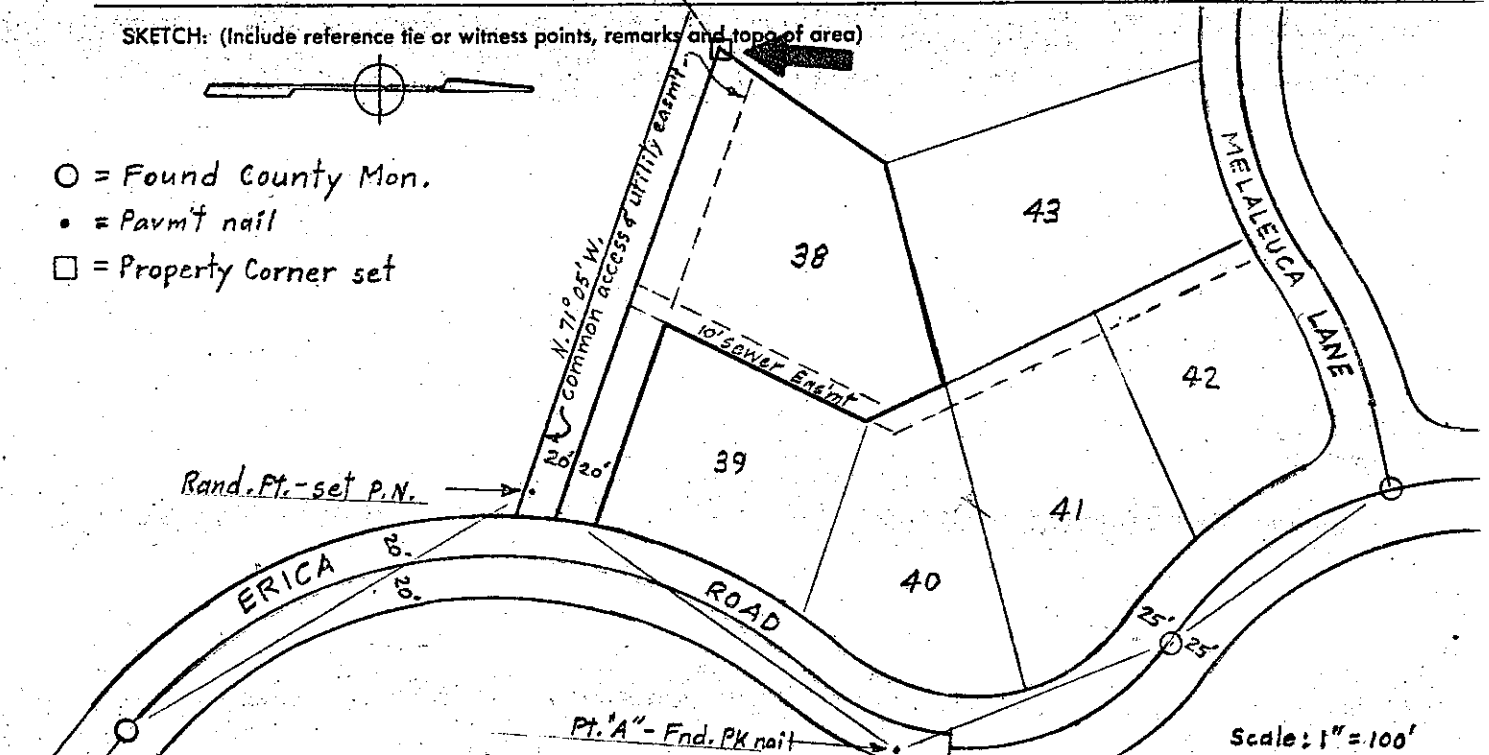
1" iron pipe with L.S. tag #5527.



CALIFORNIA COORDINATE SYSTEM ORDER: FIRST  SECOND  THIRD   
 STATIONS USED: NGS (USC & GS)  STATE  COUNTY  OTHER  STATION \_\_\_\_\_ STATION \_\_\_\_\_  
 ZONE \_\_\_\_\_ ELEVATION \_\_\_\_\_ NORTHINGS (Y) \_\_\_\_\_ EASTINGS (X) \_\_\_\_\_

SKETCH: (Include reference tie or witness points, remarks and topo of area)

- = Found County Mon.
- = Pavmt nail
- = Property Corner set



**SURVEYOR'S CERTIFICATE**  
 THIS CORNER RECORD WAS PREPARED BY ME OR UNDER MY DIRECTION IN CONFORMANCE WITH THE LAND SURVEYORS ACT ON December 29, 1987

SIGNED: Milo Gene Walker  
 L.S. or R.C.E. No.: L.S. 5527

SEAL

**COUNTY SURVEYOR'S CERTIFICATE**  
 THE CORNER RECORD WAS RECEIVED 3/11/88 AND EXAMINED AND FILED 3/11/88

BY: [Signature]  
 TITLE: Dep. C. S.

DOCUMENT No. \_\_\_\_\_  
 STATEMENT ON BACK OF SHEET  
Ex 3-31-88

