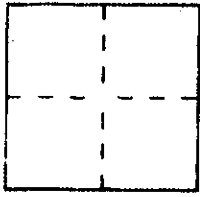


CORNER RECORD

A.P.# 199-290-36
Document Number _____
County of MARIN, California

City of Muir Beach

Brief Legal Description 280 Sunset Way - Parcel 2 9 PM 53



CORNER TYPE

Government Corner Control
Meander Property
Rancho Other
Date of Survey _____

**COORDINATES
(Optional)**

N. _____
E. _____
Zone _____ Datum _____
Elev. _____

Corner — Left as found Found and tagged Established Reestablished Rebuilt

Identification and type of corner found: Evidence used to identify or procedure used to establish or reestablish the corner:

See Sketch on Back

A description of the physical condition of the monument as found and as set or reset:

See Sketch on Back

SURVEYOR'S STATEMENT

This Corner Record was prepared by me or under my direction in conformance with

the Land Surveyors' Act on Aug 3 1999.

Signed Michael G. Brogan L.S. or R.C.E. Number LS 5767

COUNTY SURVEYOR'S STATEMENT

This Corner Record was received AUGUST 12 1999 and examined

and filed AUGUST 16 1999.

Signed John M. Woolley Title DEPUTY



County Surveyor's Comment _____

NOTES:

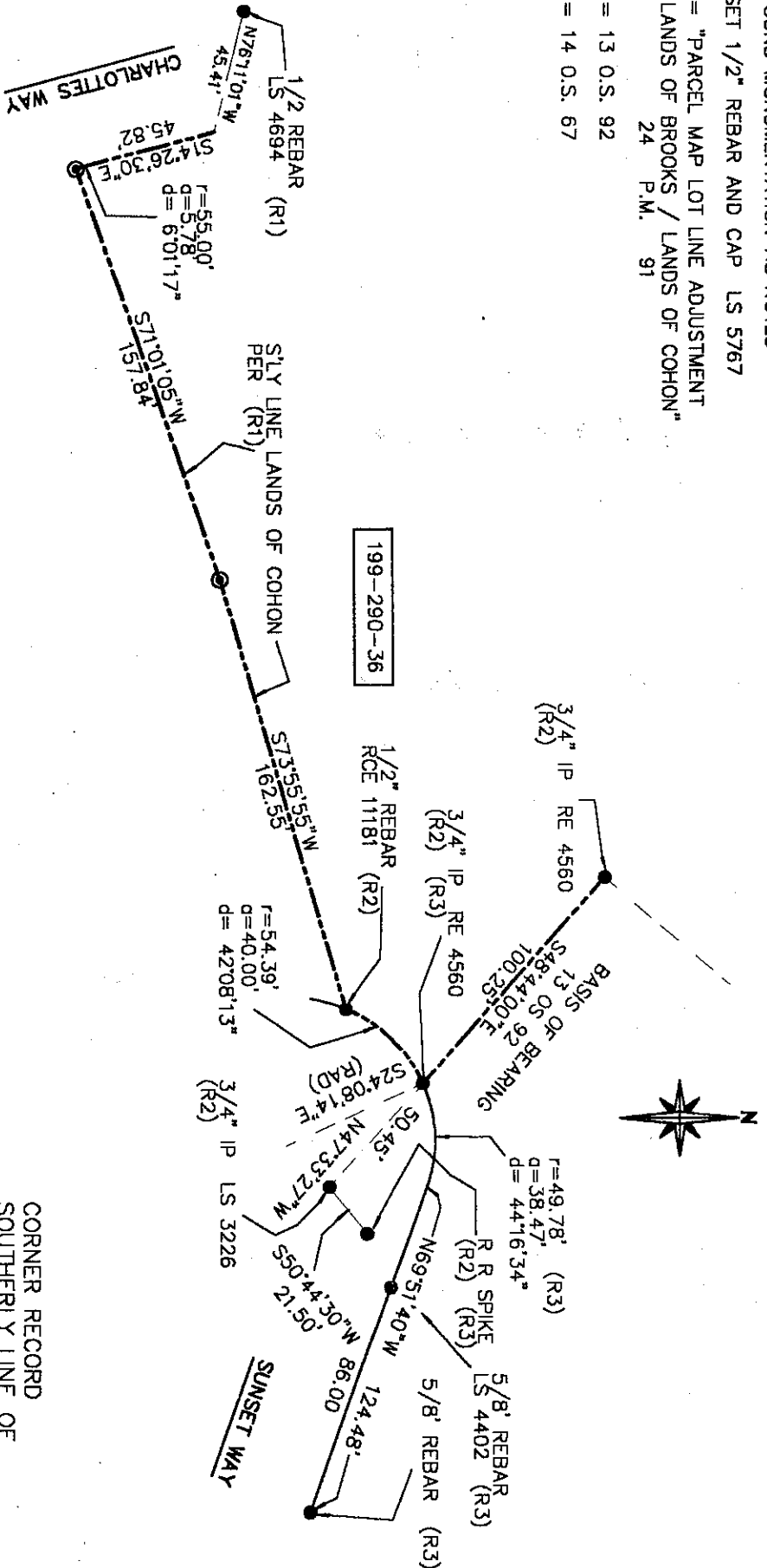
● = FOUND MONUMENTATION AS NOTED

⊙ = SET 1/2" REBAR AND CAP LS 5767

R1 = "PARCEL MAP LOT LINE ADJUSTMENT
LANDS OF BROOKS / LANDS OF COHON"
24 P.M. 91

R2 = 13 O.S. 92

R3 = 14 O.S. 67



M. BROGAN AND ASSOCIATES, INC.
319 MILLER AVENUE
MILL VALLEY CA 94941
JOB NO. 5441 NOT TO SCALE

APN 199-290-36

CORNER RECORD
SOUTHERLY LINE OF
THE LANDS OF COHON
24 P. M. 91

MUIR BEACH MARIN COUNTY
CALIFORNIA

CORNER RECORD

Document Number APN 199-290-36

City of SAUSALITO (MUIR BEACH) County of MARIN, California
Brief Legal Description LANDS OF COHON, BOOK 3520 DEEDS, PAGE 232, MARIN COUNTY RECORDS.

CORNER TYPE

COORDINATES
(Optional)

Government Corner Control
 Meander Property
 Rancho Other
 Date of Survey _____

N. _____
 E. _____
 Zone _____ Datum _____
 Elev. _____

Corner - Left as found Found and tagged Established Reestablished Rebuilt

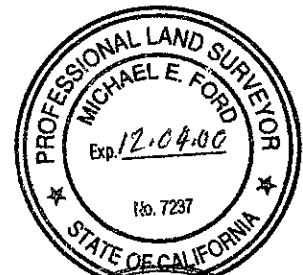
Identification and type of corner found: Evidence used to identify or procedure used to establish or reestablish the corner: REESTABLISHED 2 CORNERS OF PARCEL 2 PER PARCEL MAP FOUND IN VOLUME 9 OF PARCEL MAPS AT PAGE 53 MARIN COUNTY RECORDS. PIPE SET AFTER ESTABLISHING A BASIS OF BEARING USING FOUND CENTERLINE MONUMENTS ON AHAB DRIVE, AS SHOWN ON ABOVE MENTIONED PARCEL MAP.

A description of the physical condition of the monument as found and as set or reset: SET 1/2" IRON PIPE TAGGED L.S. 7237

SURVEYOR'S STATEMENT

This Corner Record was prepared by me or under my direction in conformance with the Land Surveyors' Act on December 7, 2000.

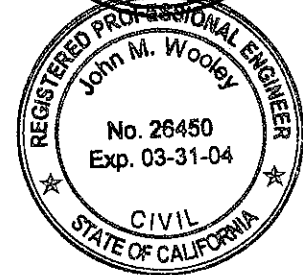
Signed Michael E. Ford (L.S.) or R.C.E. Number 7237



COUNTY SURVEYOR'S STATEMENT

This Corner Record was received 12-28-2000 1900 and examined and filed 1-3-2001 1901.

Signed John M. Wooley Title DEPUTY



County Surveyor's Comment

A H A B D R I V E

N 84°55'03" E 358.55' (R&M)

BEARING BASIS
N70°00'00"W 125.61' (R&M)

SEASCAPE
13 RECORD MAPS 54

S 68°00'00" W

S12°22'00"W
63.00'

S20°17'21"W
142.61'

N 82°12'00" W

206.05' (R&M)

N41°16'00"E
60.19' (R&M)

LANDS of COHON
3520 O.R. 232
PARCEL 2
PARCEL MAPS 53

- FOUND CENTERLINE MONUMENT
- 3/4 IRON PIPE PER (9 PARCEL MAPS 53)
- SET 1/2" IRON PIPE WITH TAG L.S. 7237 (R&M)
- RECORD AND MEASURED (R&M)

ALL BEARINGS AND DISTANCES SHOWN ARE PER RECORD INFORMATION VOLUME 9 OF PARCEL MAPS, AT PAGE 53, MARIN COUNTY RECORDS.



GRAPHIC SCALE

(IN FEET)

1 inch = 60 ft.

HOGAN - FORD
LAND SURVEYING

8910 Sonoma Highway Ph.(707)833-6488
Kenwood, CA 95462 Fax(707)833-5744

JOB #000419

SHEET 2 OF 2