

CORNER RECORD

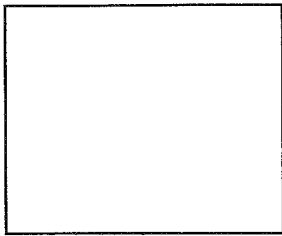
Document Number

City of Muir Beach

County of Marin,

State of California

Brief Legal Description: APN 199-283-09, that parcel subject to "Record Of Survey filed in Book 17 Of Maps, Page 5, Marin County Records



Corner Type

Coordinates (optional)

Government Corner Control

N.

Meander Property

E.

Rancho Other

Zone _____ Datum

Date of Survey July 30, 2014

Elev.

Corner - Left as found Found and tagged Established Reestablished Rebuilt

Identification and type of corner found; Evidence used to identify or procedure used to establish or re-establish the corner: Using Record information from that "Record Of Survey" filed in Book 17 of Surveys, Page 5, Marin County Records, recalculated the lot corners based upon record information and found centerline monumentation as shown on said "Record Of Survey."

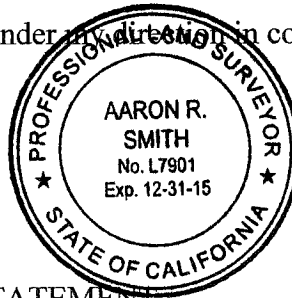
A description of the physical condition of the monument as found and as set or reset:

Centerline monuments as shown on "Record Of Survey were found, together with 3/4" iron pipe monuments, tagged "RCE 15745" at some of the southerly lot corners. Set 3/4" iron pipes with cap "PLS 7901" at southerly lot corners and angles, and also set 1/2" rebar with cap "PLS 7901" at intermediate points along east and west lines. On northerly line of lot (frontage with Ahab Drive) set 1/2" brass disk "PLS7901" at northeasterly corners.

SURVEYOR'S STATEMENT

This Corner Record was prepared by me or under my direct supervision in conformance with the Land Surveyor's Act on August 7, 2014.

Signed: Aaron R. Smith
Aaron R. Smith, PLS 7901,
my license expires 12/31/15



COUNTY SURVEYOR'S STATEMENT

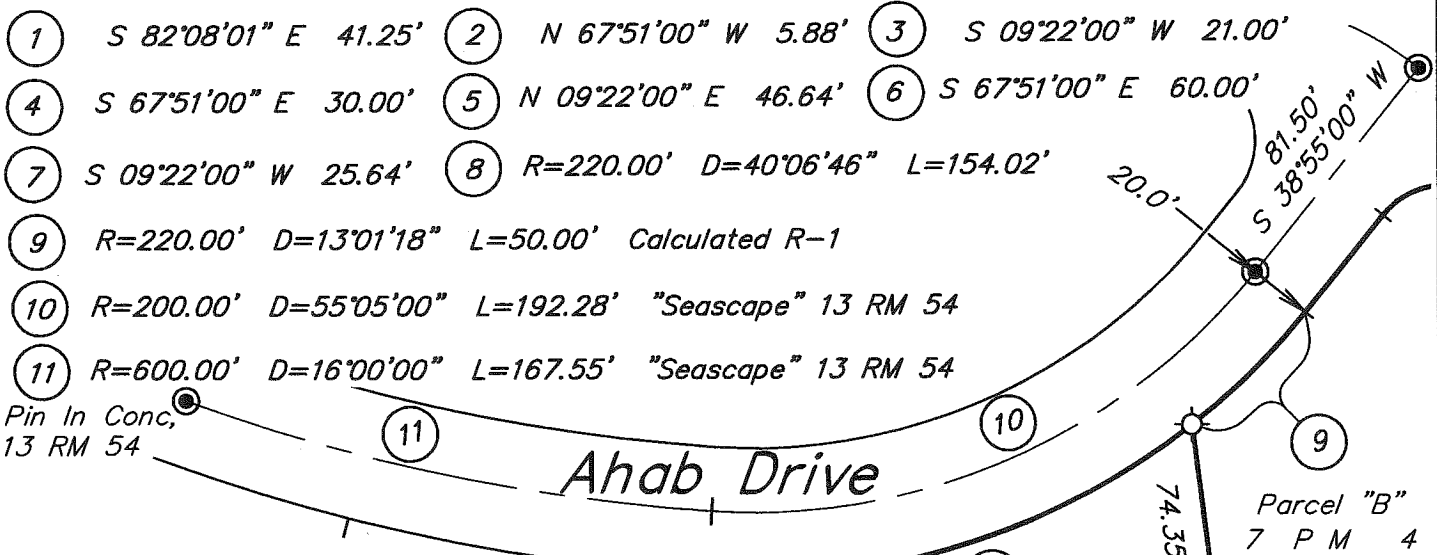
This Corner Record was received August 21, 2014 and examined and filed OCTOBER 15, 2014.

Signed Richard G. Simonitch County Surveyor, Marin County
by Deputy: Craig Tackabery, PLS 7128
my license expires 12/31/14



County Surveyor's Comment:

Corner Record



LEGEND:

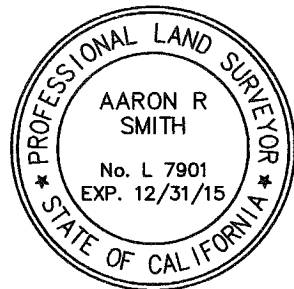
- Found Pin In Concrete, Per R-1
- Found Monument per R-1
- ▲ Set 1/2" Rebar, tagged PLS 7901
- Set 3/4" Iron Pipe, tagged PLS 7901
- ⊙ Set 1/2" Brass Tag, PLS 7901

All bearings and distances shown are Record (R-1) and measured unless otherwise noted.

(M) Measured Only

R-1: "Record Of Survey" Filed February 23, 1981 In Book 17 Of Surveys, Page 5, Marin County Records

D-1: Grant Deed Filed Under Document Number 2013-0048583, Marin County Records



Dated: Sept. 24, 2014

Aaron R. Smith
 Aaron R. Smith, PLS 7901
 my license expires 12/31/15

adobe associates, inc.
 civil engineering | land surveying | wastewater
 1220 N. Dutton, Ave., Santa Rosa, Ca. 95401
 P (707) 541-2300; F (707) 541-2301

File: T:\2014 PROJECTS\14159\dwg\Adobe-Survey\14159-CR-20140731.dwg Time: Sep 23, 2014 - 10:48am