

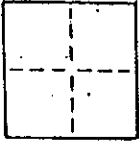
A.P. #199-283-05

CORNER RECORD

COUNTY OF _____ T. _____ R. _____ MERIDIAN _____ CALIFORNIA

CORNER TYPE: GOVT. CORNER MEANDER RANCHO CONTROL OTHER

CORNER IDENTIFICATION — DATE OF VISIT _____ 19____



AP# 199-283-05

CORNER — LEFT AS FOUND FOUND AND TAGGED REESTABLISHED OBLITERATED CORNER REBUILT

PHYSICAL DESCRIPTION OF CORNER FOUND; EVIDENCE AND METHOD USED TO IDENTIFY OR REESTABLISH

⊙ indicates standard County Street Monument found per 13 Maps 54

PHYSICAL DESCRIPTION OF MONUMENTS REBUILT OR PERPETUATED

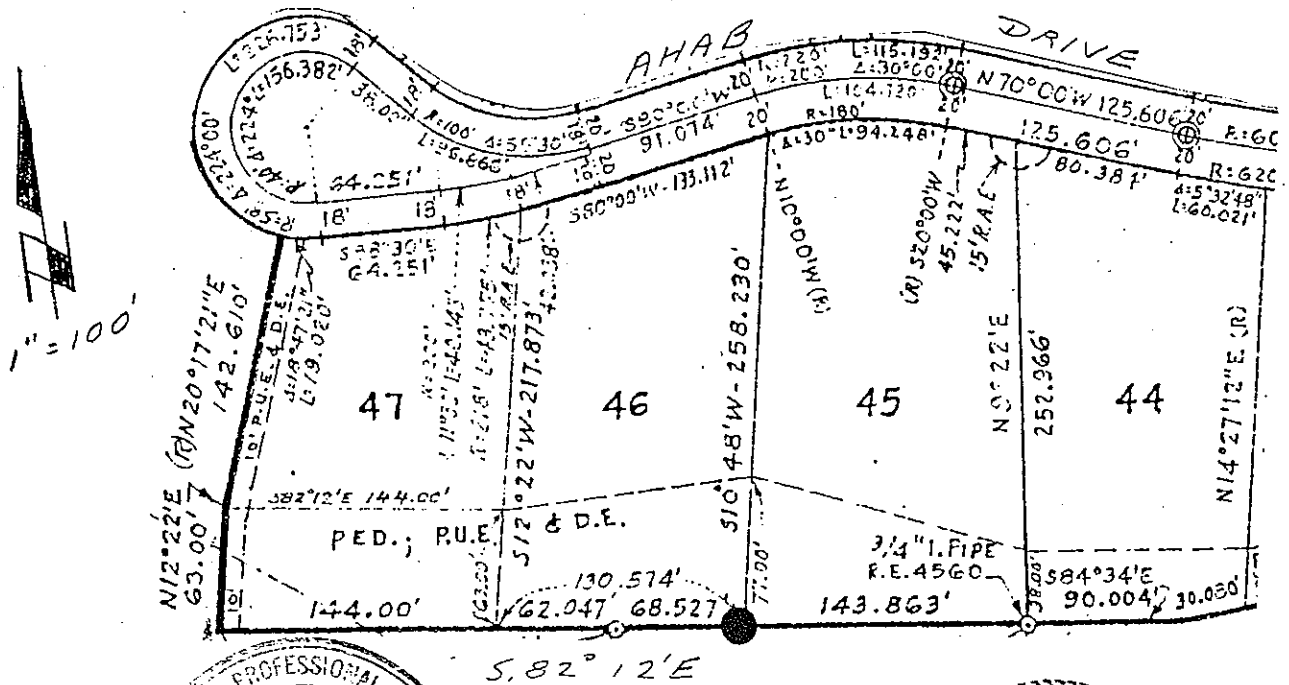
● indicates set 3/4 inch iron pipe, tag RCE 17,486 at corner of Lot 46, Seacape Subdivision (13 Maps 54)

CALIFORNIA COORDINATE SYSTEM ORDER: FIRST SECOND THIRD

STATIONS USED: NGS (USC & GS) STATE COUNTY OTHER STATION _____

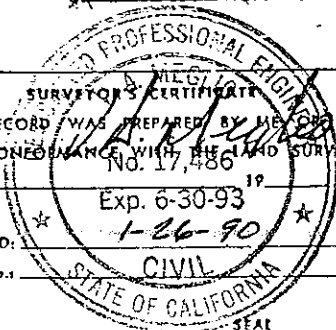
ZONE _____ ELEVATION _____ NORTHINGS (Y) _____ EASTINGS (X) _____

SKETCH: (Include reference line or witness points, remarks and topo of area)



THIS CORNER RECORD WAS PREPARED BY ME OR UNDER MY DIRECTION IN CONFORMANCE WITH THE LAND SURVEYORS ACT ON _____ 19____

SIGNED: _____
L.S. or R.C.E. No. _____



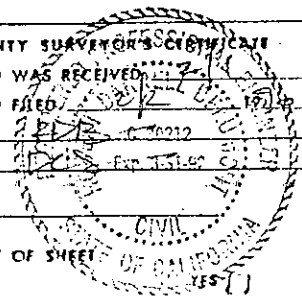
COUNTY SURVEYOR'S CERTIFICATE

THE CORNER RECORD WAS RECEIVED _____ 19____ AND EXAMINED AND FILED _____ 19____

BY: _____ TITLE: _____

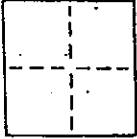
DOCUMENT No. _____

STATEMENT ON BACK OF SHEET _____



CORNER RECORD

COUNTY OF _____ T. _____ R. _____ MERIDIAN CALIFORNIA
 CORNER TYPE: GOVT. CORNER MEANDER RANCHO CONTROL OTHER
 CORNER IDENTIFICATION — DATE OF VISIT _____ 19__



AP#199-283-05

CORNER — LEFT AS FOUND FOUND AND TAGGED REESTABLISHED OBLITERATED CORNER REBUILT

PHYSICAL DESCRIPTION OF CORNER FOUND; EVIDENCE AND METHOD USED TO IDENTIFY OR REESTABLISH

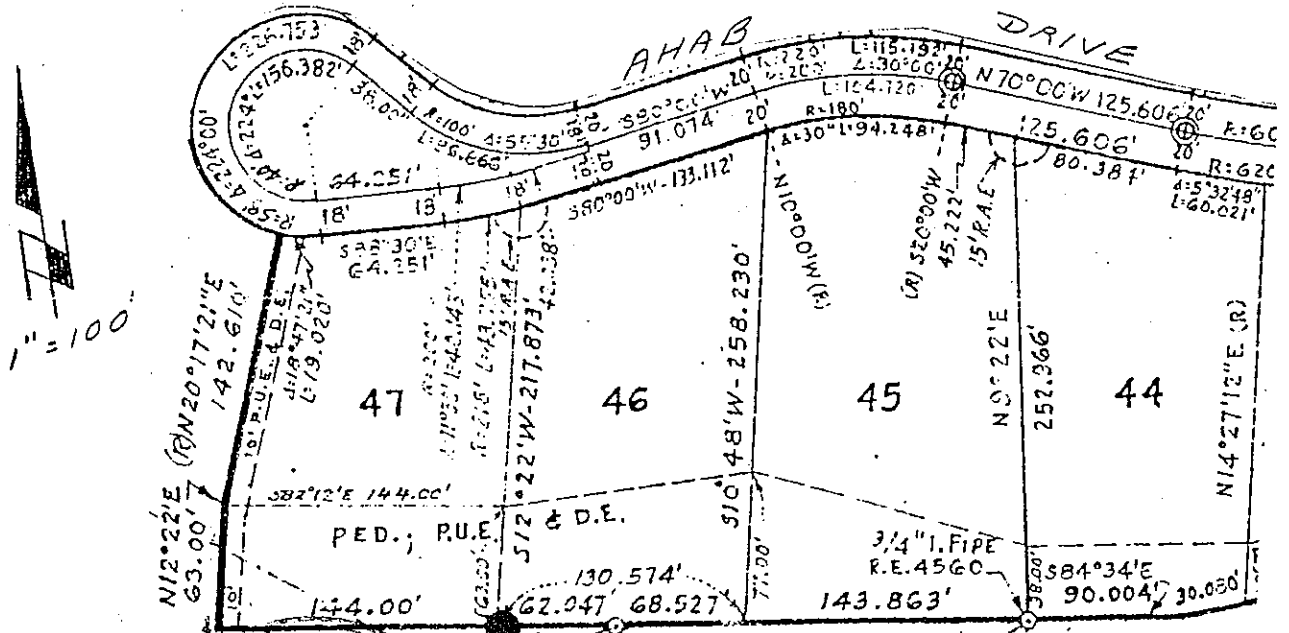
⊙ indicates standard County Street Monument found per 13 Maps 54

PHYSICAL DESCRIPTION OF MONUMENTS REBUILT OR PERPETUATED

● indicates set 3/4 inch iron pipe, tag RCE 17,486 at corner of Lot 46, Seacape Subdivision (13 Maps 54)

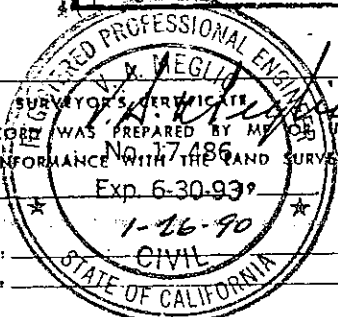
CALIFORNIA COORDINATE SYSTEM ORDER: FIRST SECOND THIRD
 STATIONS USED: NGS (USC & GS) STATE COUNTY OTHER STATION _____ STATION _____
 ZONE _____ ELEVATION _____ NORTHINGS (Y) _____ EASTINGS (X) _____

SKETCH: (Include reference file or witness points, remarks and topo of area)

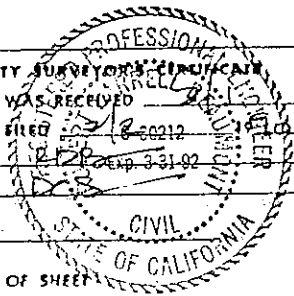


THIS CORNER RECORD WAS PREPARED BY ME OR UNDER MY DIRECTION IN CONFORMANCE WITH THE LAND SURVEYORS ACT ON _____

SIGNED: _____
 I.S. or R.C.E. No.: _____

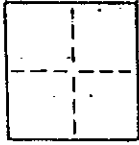


COUNTY SURVEYORS' CERTIFICATE
 THE CORNER RECORD WAS RECEIVED _____ 19__
 AND EXAMINED AND FILED _____
 BY: _____
 TITLE: _____
 DOCUMENT No. _____
 STATEMENT ON BACK OF SHEET _____



CORNER RECORD

COUNTY OF _____ T. _____ R. _____ MERIDIAN CALIFORNIA
 CORNER TYPE: GOVT. CORNER MEANDER RANCHO CONTROL OTHER
 CORNER IDENTIFICATION — DATE OF VISIT _____ 19____



AP# 199-283-05

CORNER — LEFT AS FOUND FOUND AND TAGGED REESTABLISHED OBLITERATED CORNER REBUILT

PHYSICAL DESCRIPTION OF CORNER FOUND; EVIDENCE AND METHOD USED TO IDENTIFY OR REESTABLISH

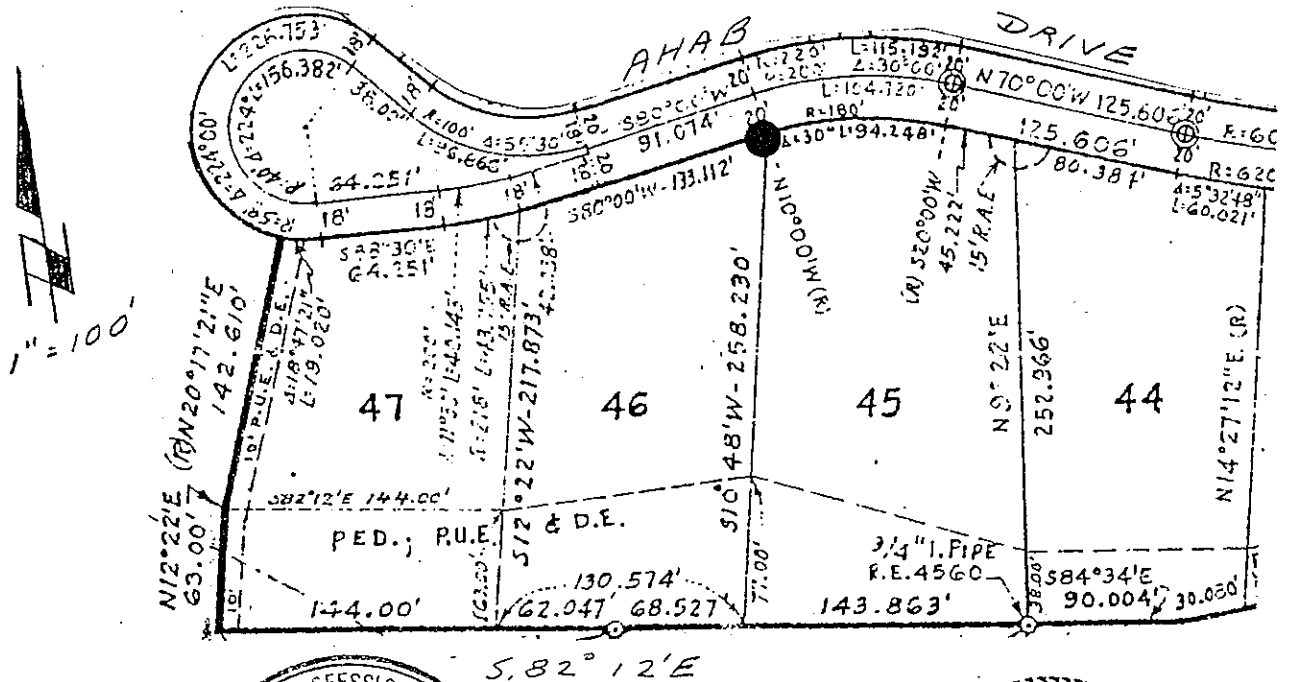
⊙ indicates standard County Street Monument found per 13 Maps 54

PHYSICAL DESCRIPTION OF MONUMENTS REBUILT OR PERPETUATED

● indicates set 3/4 inch iron pipe, tag RCE 17,486 at corner of Lot 46, Seacape Subdivision (13 Maps 54)

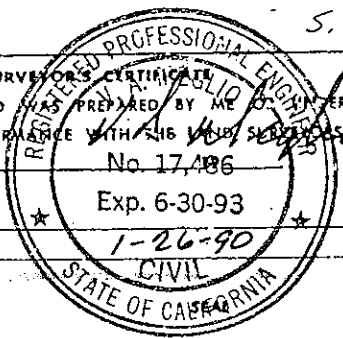
CALIFORNIA COORDINATE SYSTEM ORDER: FIRST SECOND THIRD
 STATIONS USED: NGS (USC & GS) STATE COUNTY OTHER STATION _____ STATION _____
 ZONE _____ ELEVATION _____ NORTHINGS (Y) _____ EASTINGS (X) _____

SKETCH: (Include reference tie or witness points, remarks and topo of area)



SURVEYOR'S CERTIFICATE
 THIS CORNER RECORD WAS PREPARED BY ME IN MY OWN PERSONAL AND PROFESSIONAL CAPACITY AND IN CONFORMANCE WITH THE PROVISIONS OF THE SURVEYING ACT OF 1907.
 No. 17,486

SIGNED: _____
 L.S. or R.C.E. No. _____



COUNTY SURVEYOR'S OFFICE
 THE CORNER RECORD WAS RECEIVED BY ME AND EXAMINED AND FILED IN THE PUBLIC RECORDS OF THE COUNTY OF _____ ON _____ 1970
 BY: _____
 TITLE: _____
 DOCUMENT No. _____
 STATEMENT ON BACK OF SHEET _____

