

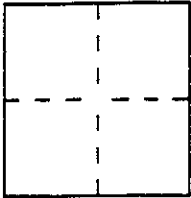
# CORNER RECORD

Document Number APN 199-281-02

City of MUIR BEACH

County of MARIN, California

Brief Legal Description LOT 32, 13 RM 54, "MAP OF SEACAPE", COUNTY OF MARIN, CA



### CORNER TYPE

Government Corner  Control   
 Meander  Property   
 Rancho  Other   
 Date of Survey \_\_\_\_\_

### COORDINATES (Optional)

N. \_\_\_\_\_  
 E. \_\_\_\_\_  
 Zone \_\_\_\_\_ Datum \_\_\_\_\_  
 Elev. \_\_\_\_\_

Corner — Left as found  Found and tagged  Established  Reestablished  Rebuilt

Identification and type of corner found: Evidence used to identify or procedure used to establish or reestablish the corner:  
 - FOUND AND HELD 2 CENTERLINE MONUMENTS PER 13 RM 54 (1/8" STEEL PIN W/ BRASS TAG RCE 8181 IN CONC., IN MON. WELL) AT INTERSECTION OF SEACAPE DR. AND STARBUCK DR.

- FOUND 1x2 HUB W/ BRASS TAG RCE 8181 AT N.W. CORNER OF LOT 32 (0.23' FROM CALCULATED CORNER)

A description of the physical condition of the monument as found and as set or reset: SET 3/4" I.D. IRON PIPE W/ PLASTIC CAP RCE 18221 AT REMAINING 3 PRIMARY CORNERS OF LOT 32. FIELD SURVEY PERFORMED AND MONUMENTS SET ON DEC. 21, 1995.

### SURVEYOR'S STATEMENT

This Corner Record was prepared by me or under my direction in conformance with the Land Surveyors' Act on FEBRUARY 1 1996.

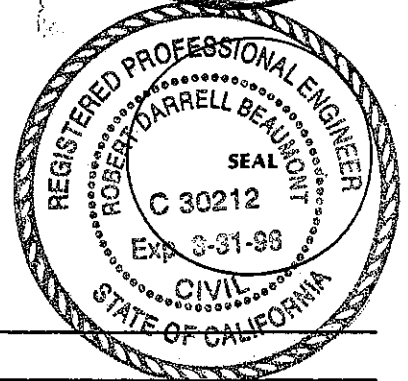
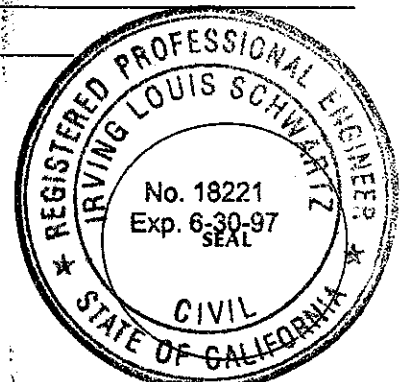
Signed [Signature] L.S. or R.C.E. Number C 18221

### COUNTY SURVEYOR'S STATEMENT

This Corner Record was received FEBRUARY 5 1996 and examined and filed 2-16 1996.

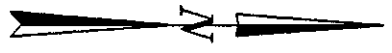
Signed [Signature] Title DCS

County Surveyor's Comment \_\_\_\_\_

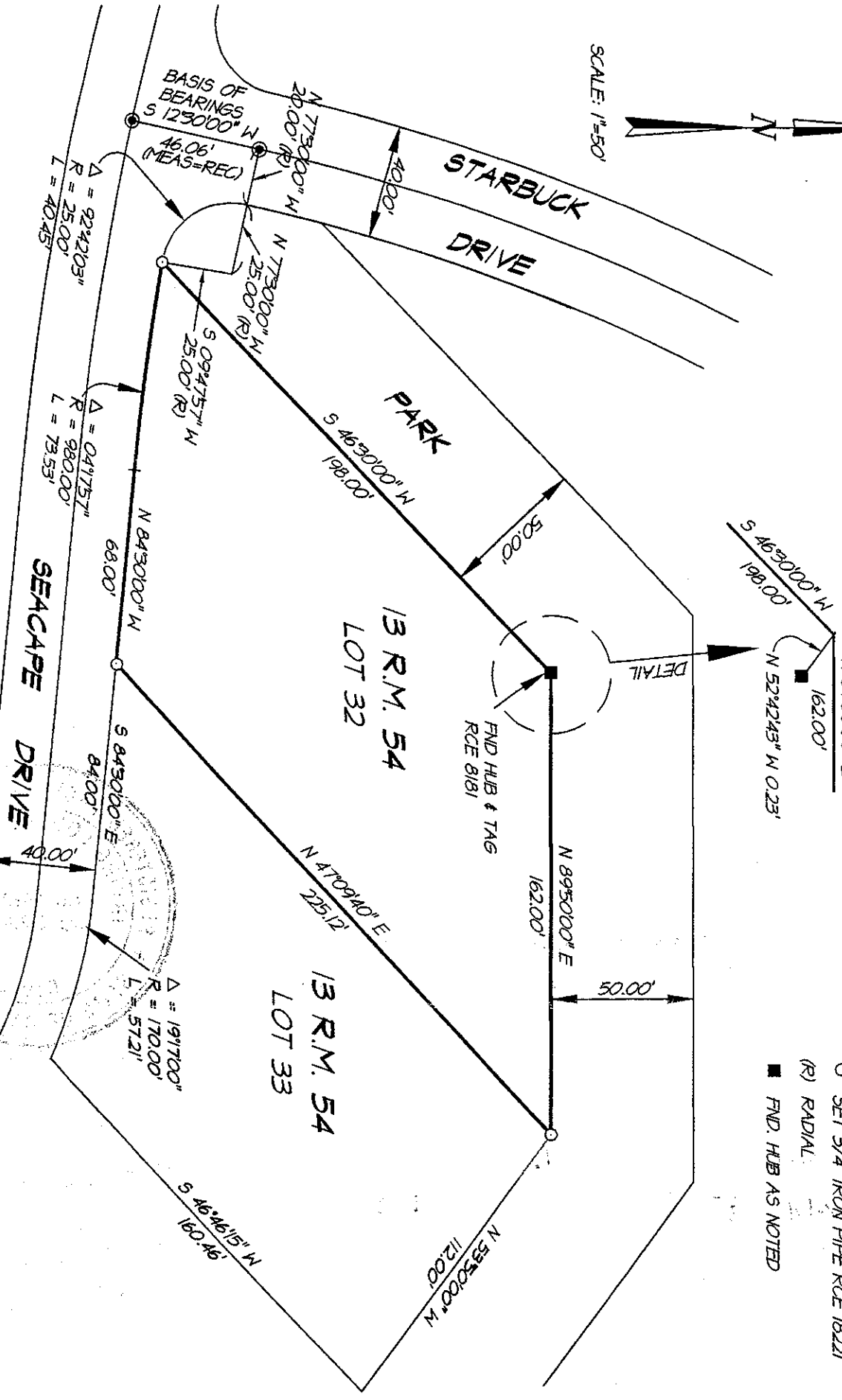


A.P.N. 199-281-02  
 D.M.G. FILE: 6560CR  
 D.M.G. DISC: 260  
 JOB NO.: 6560

SCALE: 1"=50'



NOTE:  
ALL DIMENSIONS SHOWN HEREON  
ARE PER 13 RM 54



- LEGEND**
- FND. 1/8" STEEL PIN W/ BRASS TAG
  - RCE 8181 IN MON. WELL
  - SET 3/4" IRON PIPE RCE 18221
  - (R) RADIAL
  - FND. HUB AS NOTED

FND HUB & TAG  
RCE 8181

DETAIL

13 R.M. 54  
LOT 32

13 R.M. 54  
LOT 33

STARBUCK DRIVE

SEACAPE DRIVE

PARK

BASIS OF BEARINGS  
 S 12°30'00" W  
 46.06' (MEAS=REC)

$\Delta = 92^{\circ}42'03''$   
 $R = 25.00'$   
 $L = 40.45'$

$\Delta = 04^{\circ}17'57''$   
 $R = 980.00'$   
 $L = 73.53'$

$\Delta = 191^{\circ}17'00''$   
 $R = 170.00'$   
 $L = 57.21'$

S 46°30'00" W  
 198.81

N 89°50'00" E  
 162.00'

N 52°42'43" W 0.23'

N 89°50'00" E

N 89°50'00" E

N 47°09'40" E  
 225.12'

S 46°46'15" W  
 160.46'

N 53°30'00" W  
 112.00'

N 84°30'00" W

S 84°30'00" E

S 84°30'00" E

S 84°30'00" E

S 84°30'00" E

S 84°30'00" E

S 84°30'00" E

S 84°30'00" E

S 84°30'00" E

S 84°30'00" E

S 84°30'00" E

S 84°30'00" E

S 84°30'00" E

S 84°30'00" E

S 84°30'00" E

S 84°30'00" E

S 84°30'00" E

S 84°30'00" E

S 84°30'00" E

S 84°30'00" E

S 84°30'00" E

S 84°30'00" E

S 84°30'00" E

S 84°30'00" E

S 84°30'00" E

S 84°30'00" E

S 84°30'00" E

S 84°30'00" E

S 84°30'00" E

S 84°30'00" E

S 84°30'00" E

S 84°30'00" E

S 84°30'00" E

S 84°30'00" E

S 84°30'00" E

S 84°30'00" E

S 84°30'00" E

S 84°30'00" E

S 84°30'00" E

S 84°30'00" E

S 84°30'00" E

S 84°30'00" E

S 84°30'00" E

S 84°30'00" E

S 84°30'00" E

S 84°30'00" E

S 84°30'00" E

S 84°30'00" E

S 84°30'00" E

S 84°30'00" E

S 84°30'00" E

S 84°30'00" E

S 84°30'00" E

S 84°30'00" E

S 84°30'00" E

S 84°30'00" E

S 84°30'00" E

S 84°30'00" E

S 84°30'00" E

S 84°30'00" E

S 84°30'00" E

S 84°30'00" E

S 84°30'00" E

S 84°30'00" E

S 84°30'00" E

S 84°30'00" E

S 84°30'00" E

S 84°30'00" E

S 84°30'00" E

S 84°30'00" E

S 84°30'00" E

S 84°30'00" E

S 84°30'00" E

S 84°30'00" E

S 84°30'00" E

S 84°30'00" E

S 84°30'00" E

S 84°30'00" E

S 84°30'00" E

S 84°30'00" E

S 84°30'00" E

S 84°30'00" E

S 84°30'00" E

S 84°30'00" E

S 84°30'00" E

S 84°30'00" E

S 84°30'00" E

S 84°30'00" E

S 84°30'00" E

S 84°30'00" E

S 84°30'00" E

S 84°30'00" E

S 84°30'00" E

S 84°30'00" E

S 84°30'00" E

S 84°30'00" E

S 84°30'00" E

S 84°30'00" E

S 84°30'00" E

S 84°30'00" E

S 84°30'00" E

S 84°30'00" E

S 84°30'00" E

S 84°30'00" E

S 84°30'00" E

S 84°30'00" E

S 84°30'00" E

S 84°30'00" E

S 84°30'00" E

S 84°30'00" E

S 84°30'00" E

S 84°30'00" E

S 84°30'00" E

S 84°30'00" E

S 84°30'00" E

S 84°30'00" E

S 84°30'00" E

S 84°30'00" E

S 84°30'00" E

S 84°30'00" E

S 84°30'00" E

S 84°30'00" E

S 84°30'00" E

S 84°30'00" E

S 84°30'00" E

S 84°30'00" E

S 84°30'00" E

S 84°30'00" E

S 84°30'00" E

S 84°30'00" E

S 84°30'00" E

S 84°30'00" E

S 84°30'00" E

S 84°30'00" E

S 84°30'00" E

S 84°30'00" E

S 84°30'00" E

S 84°30'00" E

S 84°30'00" E

S 84°30'00" E

S 84°30'00" E

S 84°30'00" E

S 84°30'00" E

S 84°30'00" E

S 84°30'00" E

S 84°30'00" E

S 84°30'00" E

S 84°30'00" E

S 84°30'00" E

S 84°30'00" E

S 84°30'00" E

S 84°30'00" E

S 84°30'00" E

S 84°30'00" E

S 84°30'00" E

S 84°30'00" E

S 84°30'00" E

S 84°30'00" E

S 84°30'00" E

S 84°30'00" E

S 84°30'00" E

S 84°30'00" E

S 84°30'00" E

S 84°30'00" E

S 84°30'00" E

S 84°30'00" E

S 84°30'00" E

S 84°30'00" E

S 84°30'00" E

S 84°30'00" E

S 84°30'00" E

S 84°30'00" E

S 84°30'00" E

S 84°30'00" E

S 84°30'00" E

S 84°30'00" E

S 84°30'00" E

S 84°30'00" E

S 84°30'00" E

S 84°30'00" E

S 84°30'00" E

S 84°30'00" E

S 84°30'00" E

S 84°30'00" E

S 84°30'00" E

S 84°30'00" E

S 84°30'00" E

S 84°30'00" E

S 84°30'00" E

S 84°30'00" E

S 84°30'00" E

S 84°30'00" E

S 84°30'00" E

S 84°30'00" E

S 84°30'00" E

S 84°30'00" E

S 84°30'00" E

S 84°30'00" E

S 84°30'00" E

S 84°30'00" E

S 84°30'00" E

S 84°30'00" E

S 84°30'00" E

S 84°30'00" E

S 84°30'00" E

S 84°30'00" E

S 84°30'00" E

S 84°30'00" E

S 84°30'00" E

S 84°30'00" E

S 84°30'00" E

S 84°30'00" E

S 84°30'00" E

S 84°30'00" E