

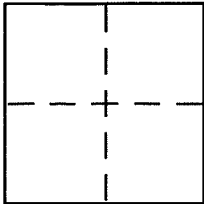
CORNER RECORD

Document Number A.P.N. 199-272-04

City of MUIR BEACH

County of MARIN, California

Brief Legal Description Lot 27 of Map of Seacape, 13 Maps 54, M.C.R.



CORNER TYPE

Government Corner Control
Meander Property
Rancho Other
Date of Survey 8.18.05

COORDINATES (Optional)

N. _____
E. _____
Zone _____ NAD27 NAD83
NAD83 Epoch _____
Elev. _____
Vert. Datum: NGVD29 NAVD88
Meas. Units: Metric Imperial

Corner - Left as found Found and tagged Established Reestablished Rebuilt

Identification and type of corner found: Evidence used to identify or procedure used to establish or reestablish the corner: Found Standard County Well Monument in the centerline of Starbuck Drive per Map of Seacape (13 Maps 54). Set #4 Rebars with alloy caps stamped "Brunner-PLS 4206" at the record positions of the N.W. & N.E. corners of lot 27 per the data shown on 13 Maps 54. A #4 rebar, not tagged was found near the N.W. corner of lot 27 and was not accepted as the corner.

A description of the physical condition of the monument as found and as set or reset: Found old decayed 2"x2" redwood hub, not tagged, at the S.W. corner of Lot 27 which was replaced with a #4 rebar and alloy cap stamped "Brunner. PLS 4206". A 2"x2" redwood hub & tag RCE 8181 was also found at the S.E. corner of lot 27. This monument is in good condition and was left as found.

SURVEYOR'S STATEMENT

This Corner Record was prepared by me or under my direction in conformance with the Land Surveyor's Act on 11.22 2005
Signed [Signature] P.L.S. or R.C.E. No. 4206

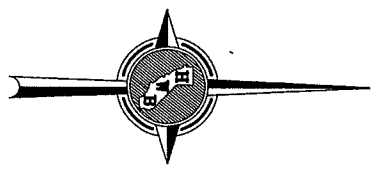
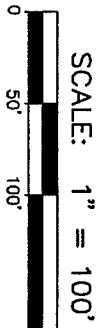


COUNTY SURVEYOR'S STATEMENT

This Corner Record was received NOVEMBER 28, 2005
and examined and filed DECEMBER 7, 2005
Signed [Signature] P.L.S. or R.C.E. No. 7128
Title COUNTY SURVEYOR



County Surveyor's Comment IT IS MY OPINION THAT THE FILING OF THIS CORNER RECORD DOES NOT COMPLY WITH BUSINESS AND PROFESSIONAL CODE 8773.2(a) AND 8765(d), BECAUSE THE DIMENSIONS MEASURED FOR THE LOT LINES OF LOT 27, MAP OF SEACAPE, 13 MAPS 54, DIFFER FROM THOSE SHOWN ON THE RECORDED MAP.



SCALE: 1" = 100'

REFERENCE INDEX

RECORDING DATA
13 MAPS 54

MAP OF SEACAPE

GENERAL NOTES

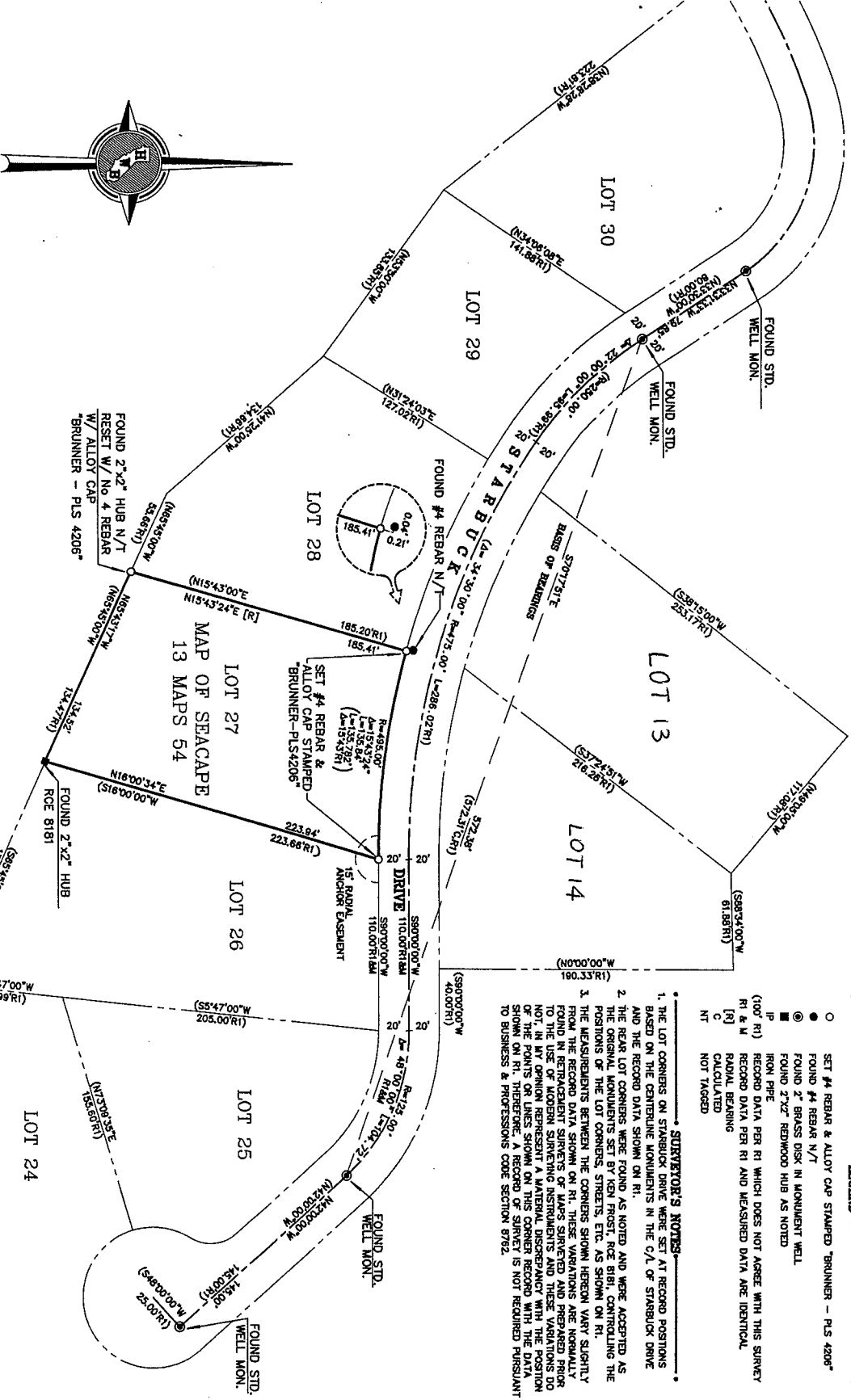
1. ALL DISTANCES AND DIMENSIONS SHOWN HEREON ARE IN FEET AND DECIMALS THEREOF
2. ALL TIES SHOWN HEREON ARE PERPENDICULAR UNLESS SHOWN OTHERWISE.
3. THIS CORNER RECORD IS BEING FILED IN ACCORDANCE WITH THE REQUIREMENTS OF BUSINESS & PROFESSIONS CODE SECTION 9755 (D) AND CALIFORNIA CODE OF REGULATIONS SECTION 454.

BASIS OF BEARINGS

N 7017 ST E BETWEEN FOUND STANDARD WELL MONUMENTS MARKING THE CENTERLINE OF STARBUCK DRIVE AS CALCULATED FROM RECORD DATA SHOWN ON RI.

STREVER'S NOTES

1. THE LOT CORNERS ON STARBUCK DRIVE WERE SET AT RECORD POSITIONS BASED ON THE RECORD DATA SHOWN ON RI.
2. THE NEAR LOT CORNERS WERE FOUND AS NOTED AND WERE ACCEPTED AS THE ORIGINAL MONUMENTS SET BY IAN FROST, REC BIRTH CONTROLLING THE POSITIONS OF THE LOT CORNERS, STREETS, ETC. AS SHOWN ON RI.
3. THE MEASUREMENTS BETWEEN THE CORNERS SHOWN HEREON VARY SLIGHTLY FROM THE RECORD DATA SHOWN ON RI. THESE VARIATIONS ARE NORMALLY FOUND IN RETRACED SURVEYS OF MAPS SURVEYED AND PREPARED PRIOR TO THE USE OF MODERN SURVEYING INSTRUMENTS AND THESE VARIATIONS DO NOT, IN MY OPINION REPRESENT A MATERIAL DISCREPANCY WITH THE POSITION OF THE POINTS OR LINES SHOWN ON THIS CORNER RECORD WITH THE DATA SHOWN ON RI. THEREFORE, A RECORD OF THIS SURVEY IS NOT REQUIRED PURSUANT TO BUSINESS & PROFESSIONS CODE SECTION 9752.



- LEGEND**
- SET #4 REBAR & ALLOY CAP STAMPED 'BRUNNER - PLS 4206'
 - FOUND #4 REBAR N/T
 - ⊙ FOUND 2" BRASS DISK IN MONUMENT WELL
 - FOUND 2" x 2" REMWOOD HUB AS NOTED
 - IP IRON PIPE
 - (100' RI) RECORD DATA PER RI WHICH DOES NOT AGREE WITH THIS SURVEY
 - [R] RI & M
 - [B] RADIAL BEARING
 - C CALCULATED
 - NT NOT TAGGED