

# CORNER RECORD

Agency Index CR24-006

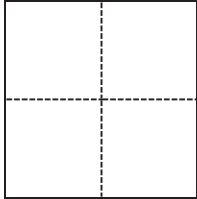
Document Number APN 199-271-11

City of Unincorporated County of Marin, California

Brief Legal Description Lot 17, Map of Seacape. 13 RM 54, Marin County Records.

### CORNER TYPE

### COORDINATES (Optional)



- Government Corner
- Meander
- Rancho
- Control
- Property
- Other

Date of Survey 06/09/2023

N. \_\_\_\_\_ E. \_\_\_\_\_

Elevation \_\_\_\_\_

Units  Metric  U.S. Survey Foot

Horizontal Datum \_\_\_\_\_

Zone \_\_\_\_\_ Epoch Date \_\_\_\_\_

Vertical Datum \_\_\_\_\_

Complies with Public Resources Code §§8801-8819

Complies with Public Resources Code §§8890-8902

PLS Act Ref.:  8765(d)  8771  8773  Other:

Corner/Monument:  Left as found  Established  Rebuilt  Pre-Construction

Found and tagged  Reestablished  Referenced  Post-Construction

Narrative of corner identified and monument as found, set, reset, replaced, or removed:

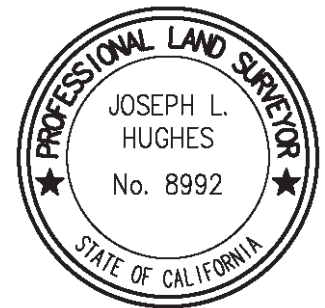
See sheet #2 for description(s):

Found monumentation as shown on Seacape 13 M 54, Marin County Records and Corner Record 199-201-03B. Set 1/2" iron pipes with yellow plastic caps stamped HUGHES PLS 8992 as shown on sheet 2.

### SURVEYOR'S STATEMENT

This Corner Record was prepared by me or under my direction in conformance with the Professional Land Surveyors' Act on March 11, 2024.

Signed *Joseph L. Hughes* P.L.S. or R.C.E. No. PLS 8992



### COUNTY SURVEYOR'S STATEMENT

This Corner Record was received March 11, 2024

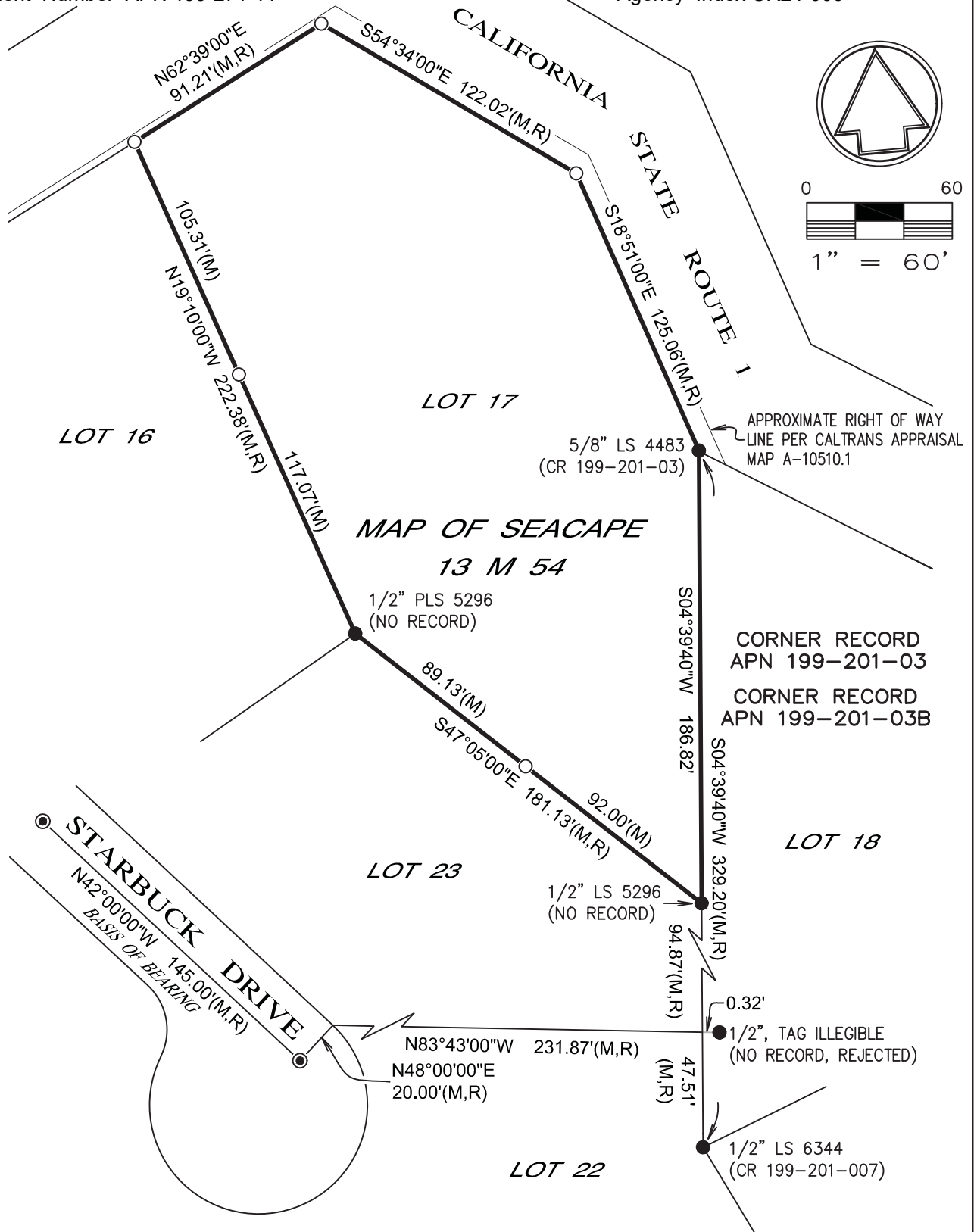
and examined and filed March 13, 2024.

Signed *T.W. Park* P.L.S.            No. 8176

Title County Surveyor

County Surveyor's Comment





**Legend**

- = 1/2" iron pipe and plastic cap set (stamped HUGHES PLS 8992)
- = Rebar and plastic cap found (size/stamped as noted)
- ⊙ = 1/16" pin in concrete in standard well monument found
- R = Seacape / 13 M 54
- M = Measured