

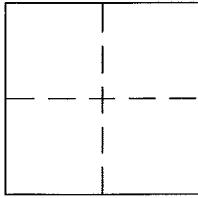
CORNER RECORD

Document Number APN 199-262-03

City of MUIR BEACH

County of MARIN, California

Brief Legal Description LOT 56 AS SHOWN ON THE MAP ENTITLED "MAP OF SEACAPE IN COUNTY OF MARIN, CALIFORNIA" VOL. 13 MAPS PAGES 54



CORNER TYPE

Government Corner Control
 Meander Property
 Rancho Other
 Date of Survey 11/24/2015

COORDINATES (Optional)

N. _____
 E. _____
 Zone _____ NAD27 NAD83
 NAD83 Epoch _____
 Elev. _____
 Vert. Datum: NGVD29 NAVD88
 Meas. Units: Metric Imperial

Corner - Left as found Found and tagged Established Reestablished Rebuilt

Identification and type of corner found: Evidence used to identify or procedure used to establish or reestablish the corner:

SEE PAGE 2

A description of the physical condition of the monument as found and as set or reset:

SEE PAGE 2

SURVEYOR'S STATEMENT

This Corner Record was prepared by me or under my direction in conformance with the Land Surveyor's Act on 2/9 2016

Signed [Signature] P.L.S. or R.C.E. No. 6784

COUNTY SURVEYOR'S STATEMENT

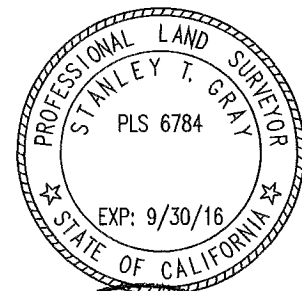
This Corner Record was received DECEMBER 15, 2015

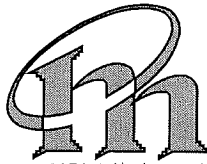
and examined and filed MARCH 14, 2016

Signed [Signature] P.L.S. or R.C.E. No. 7821

Title County Surveyor

County Surveyor's Comment _____

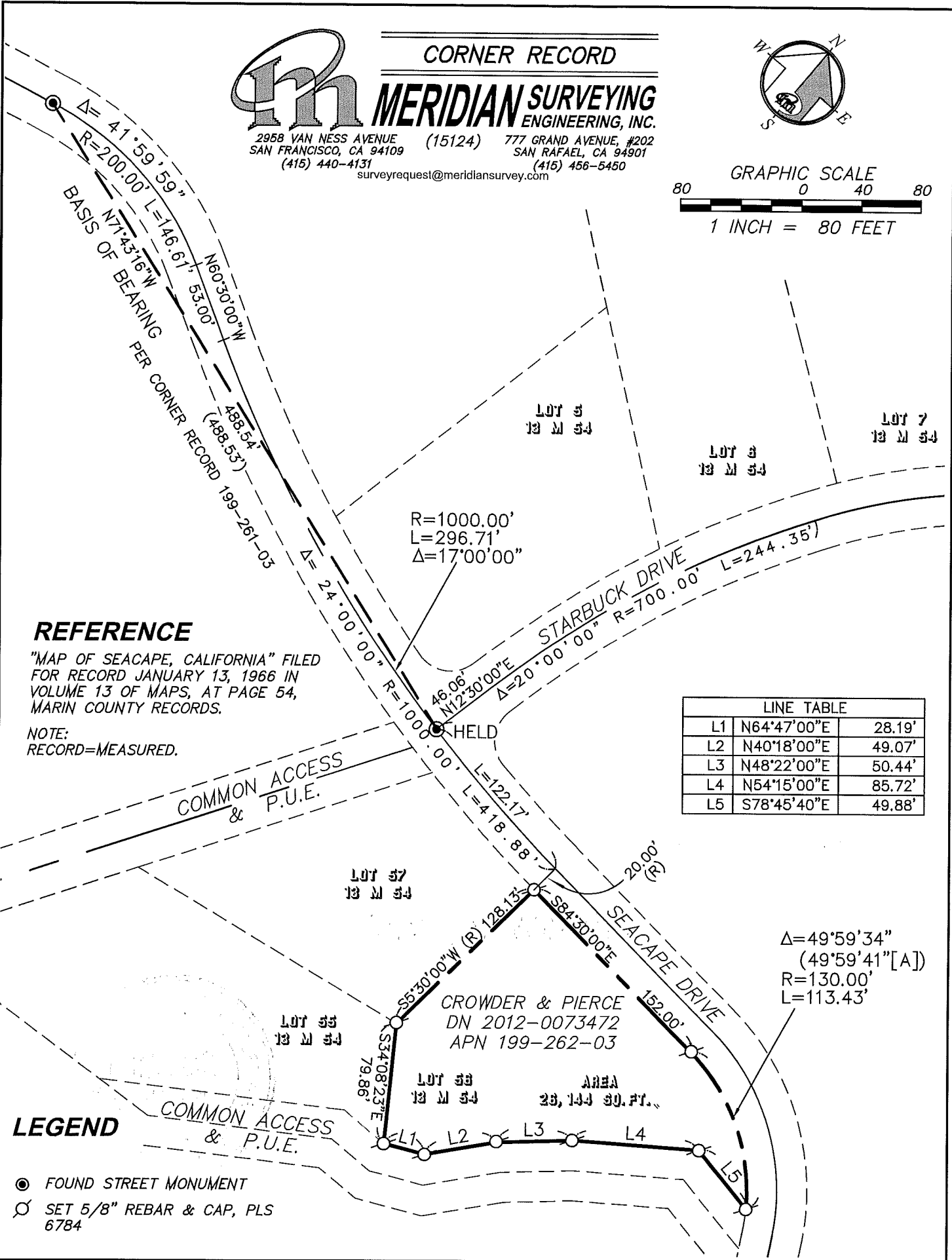
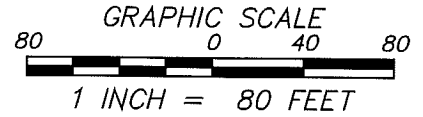
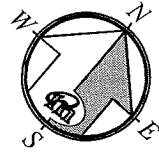




CORNER RECORD

MERIDIAN SURVEYING ENGINEERING, INC.

2958 VAN NESS AVENUE (15124) 777 GRAND AVENUE, #202
 SAN FRANCISCO, CA 94109 SAN RAFAEL, CA 94901
 (415) 440-4131 (415) 456-5450
 surveyrequest@meridiansurvey.com



REFERENCE

"MAP OF SEACAPE, CALIFORNIA" FILED FOR RECORD JANUARY 13, 1966 IN VOLUME 13 OF MAPS, AT PAGE 54, MARIN COUNTY RECORDS.

NOTE:
 RECORD=MEASURED.

LINE TABLE		
L1	N64°47'00"E	28.19'
L2	N40°18'00"E	49.07'
L3	N48°22'00"E	50.44'
L4	N54°15'00"E	85.72'
L5	S78°45'40"E	49.88'

LEGEND

- FOUND STREET MONUMENT
- ⊗ SET 5/8" REBAR & CAP, PLS 6784