

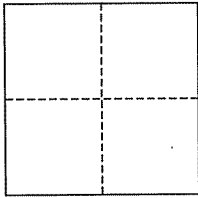
**CORNER RECORD**

Document Number 199-261-06

City of Muir Beach

County of Marin, California

Brief Legal Description Lot 6, 13 RM 54



**CORNER TYPE**

Government Corner  Control   
Meander  Property   
Rancho  Other   
Date of Survey \_\_\_\_\_

**COORDINATES (Optional)**

N. \_\_\_\_\_  
E. \_\_\_\_\_  
Zone \_\_\_\_\_ NAD27  NAD83   
NAD83 Epoch \_\_\_\_\_  
Elev. \_\_\_\_\_  
Vert. Datum: NGVD29  NAVD88   
Meas. Units: Metric  Imperial

**Corner-** Left as found  Found and tagged  Established  Reestablished  Rebuilt

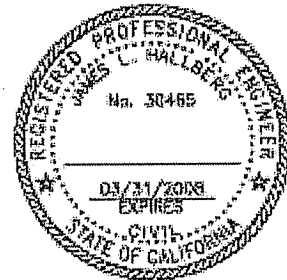
Identification and type of corner found: Evidence used to identify or procedure used to establish or reestablish the corner:  
Found Standard Street Monuments per 13 RM 54.

A description of the physical condition of the monument as found and as set or reset: Set 3/4" Iron Pipe & Plug (RCE 30465) and Rebar & Cap (RCE 30465), as shown.

**SURVEYOR'S STATEMENT**

This corner Record was prepared by me or under my direction in conformance with the Land Surveyor's Act on July 9, 2007

Signed Jay Dy P.L.S. or R.C.E. No. 30465



**COUNTY SURVEYOR'S STATEMENT**

This Corner Record was received JULY 10, 2007

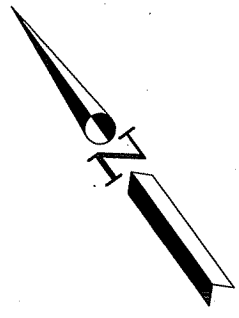
and examined and filed JULY 12, 2007

Signed \_\_\_\_\_ P.L.S. or R.C.E. No. 7128

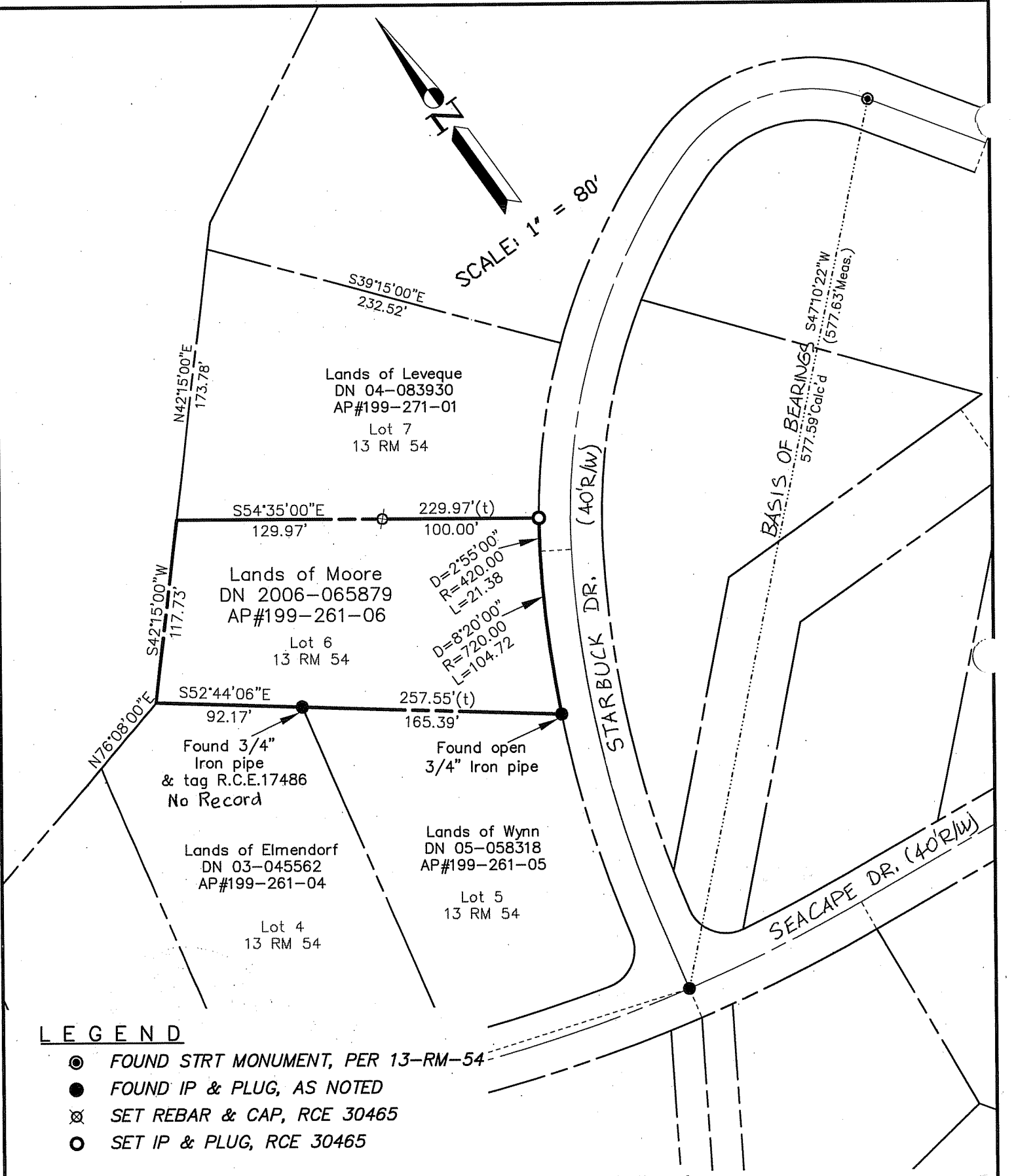
Title COUNTY SURVEYOR



**County Surveyor's Comment** \_\_\_\_\_



SCALE: 1" = 80'



**LEGEND**

- ⊙ FOUND STRT MONUMENT, PER 13-RM-54
- FOUND IP & PLUG, AS NOTED
- ⊗ SET REBAR & CAP, RCE 30465
- SET IP & PLUG, RCE 30465

Note: All distances are in feet and decimals thereof.

SHEET	1	OF	1
SCALE:	1" = 80'	DESIGN:	PR
DATE:	Jul. 2007	DRAWN:	SdA
FILE:	2007-056	CHECKED:	J.L.H

**J.L. ENGINEERING**  
 CIVIL ENGINEERS-LAND SURVEYORS  
 1539 4th ST., SAN RAFAEL, CA. 94901 (415) 457-6647

**Corner Record**

Lands Moore of - 5 Starbuck Dr.  
 APN 199-261-06, Muir Beach, Marin County, CA