

CORNER RECORD

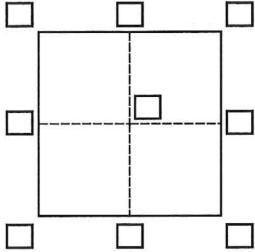
Agency Index

DPW# 18-057

Document Number AP#199-261-05

City of Muir Beach County of Marin, California

Brief Legal Description Lot 5, 13 RM 54



CORNER TYPE

Government Corner Control
 Meander Property
 Rancho Other

Date of Survey August 30, 2018

COORDINATES (Optional)

N. _____ E. _____

Elevation _____

Units Metric U.S. Survey Foot

Horizontal Datum _____

Zone _____ Epoch Date _____

Vertical Datum _____

Complies with Public Resources Code §§8801-8819

Complies with Public Resources Code §§8890-8902

PLS Act Ref.: 8765(d) 8771 8773 Other:

Corner/Monument: Left as found Established Rebuilt Pre-Construction

Found and tagged Reestablished Referenced Post-Construction

Narrative of corner identified and monument as found, set, reset, replaced, or removed:

See sheet #2 for description(s):

All points found and set per 13 RM 54 & CR#199-261-06 filed July 2007

SURVEYOR'S STATEMENT

This Corner Record was prepared by me or under my direction in conformance with

the Professional Land Surveyors' Act on November 14, 2018

Signed [Signature] P.L.S. or R.C.E. No. 30465



COUNTY SURVEYOR'S STATEMENT

This Corner Record was received SEPTEMBER 10, 2018

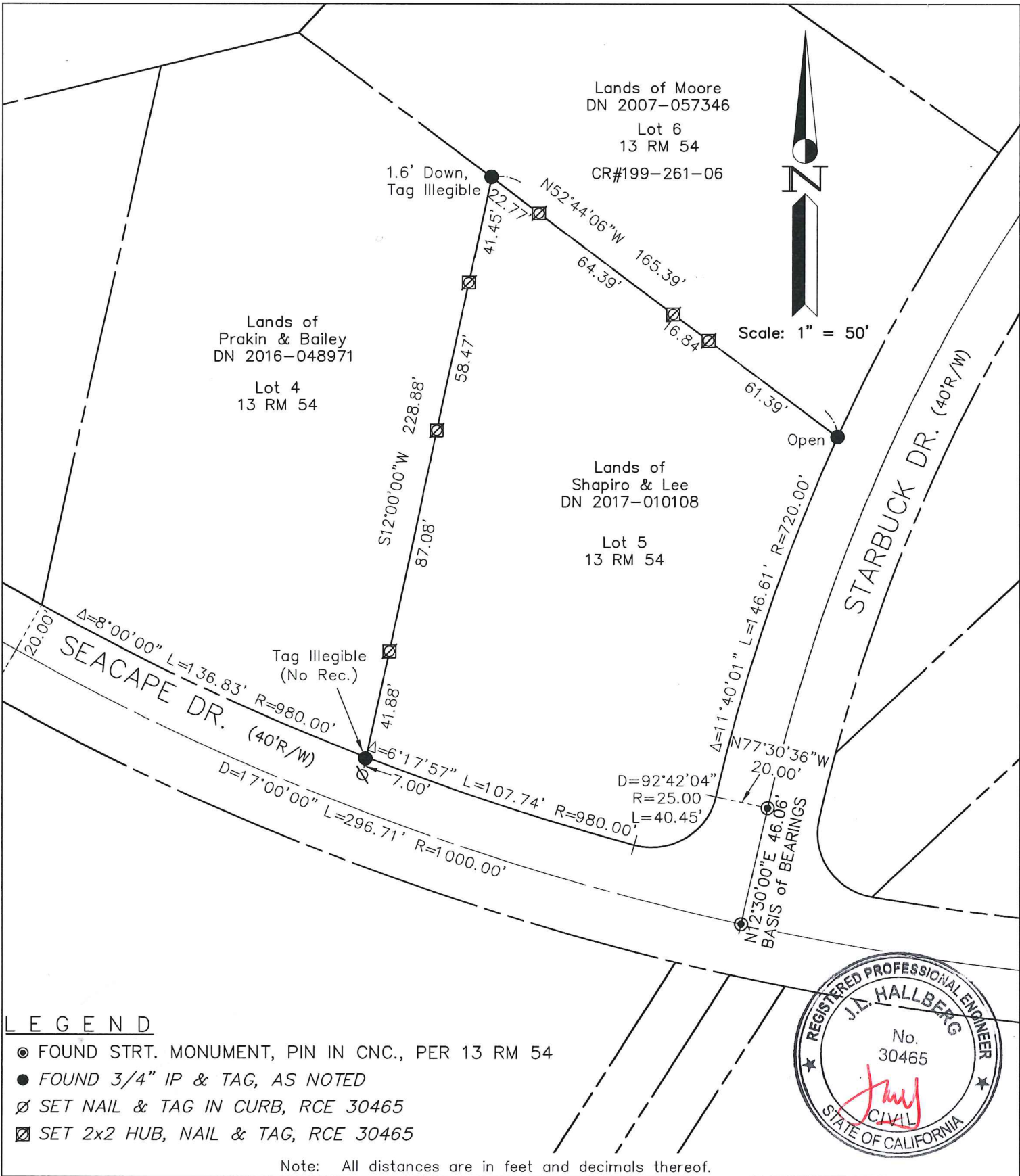
and examined and filed DEC. 11, 2018

Signed [Signature] P.L.S. or R.C.E. No. 9292

Title DEPUTY C.S.

County Surveyor's Comment





LEGEND

- FOUND STRT. MONUMENT, PIN IN CNC., PER 13 RM 54
- FOUND 3/4" IP & TAG, AS NOTED
- ∅ SET NAIL & TAG IN CURB, RCE 30465
- ☒ SET 2x2 HUB, NAIL & TAG, RCE 30465

Note: All distances are in feet and decimals thereof.



Linetype Legend	
	Subject parcel
	Parcel boundary
	Old boundary, easement
	Boundary tie
	Right of Way center-line
	Fence
	Basis of Bearings

Date: Aug 2018 Scale: 1" = 50'

J.L. ENGINEERING
 1539 4th ST.
 San Rafael, CA. 94901
 (415) 457-6647

2018-056\DWG\2018-056-BASE,CREC

Corner Record

Lands of Shapiro/Lee - 1 Starbuck Dr.
 APN 199-261-05, Muir Beach, Marin County, CA

Sheet: 1 of 2