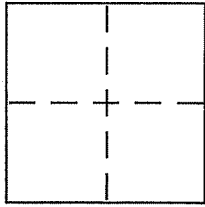


CORNER RECORD

Document Number APN 199-234-20  
County of MARIN, California

City of MUIR BEACH

Brief Legal Description PARCEL 3 - LANDS OF SCHOFIELD - VOLUME 6 OF MAPS, PAGE 67 M.C.R. AND HARLOW



CORNER TYPE

Government Corner  Control   
Meander  Property   
Rancho  Other   
Date of Survey \_\_\_\_\_

COORDINATES (Optional)

N. \_\_\_\_\_  
E. \_\_\_\_\_  
Zone \_\_\_\_\_ NAD27  NAD83   
NAD83 Epoch \_\_\_\_\_  
Elev. \_\_\_\_\_  
Vert. Datum: NGVD29  NAVD88   
Meas. Units: Metric  Imperial

Corner - Left as found  Found and tagged  Established  Reestablished  Rebuilt

Identification and type of corner found: Evidence used to identify or procedure used to establish or reestablish the corner:

FOUND IRON BOLT AND 1/2" IRON PIPE AS SHOWN ON ABOVE REFERENCED MAP. RECORD DISTANCES AND ANGLES WERE HELD TO REESTABLISH PARCEL 3 LOT CORNERS

A description of the physical condition of the monument as found and as set or reset: NO MONUMENTS FOUND AT ANY OF PARCEL 3 LOT CORNERS. SET 3/4" IRON PIPES AT ALL OF LOT CORNERS. SEE PAGE 2 OF 2 HEREIN.

SURVEYOR'S STATEMENT

This Corner Record was prepared by me or under my direction in conformance with the Land Surveyor's Act on NOVEMBER 12, 2010

Signed Fred M. Phelps P.L.S. or P.C.E. No. LS 4483



COUNTY SURVEYOR'S STATEMENT

This Corner Record was received NOVEMBER 16, 2010

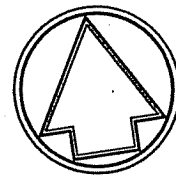
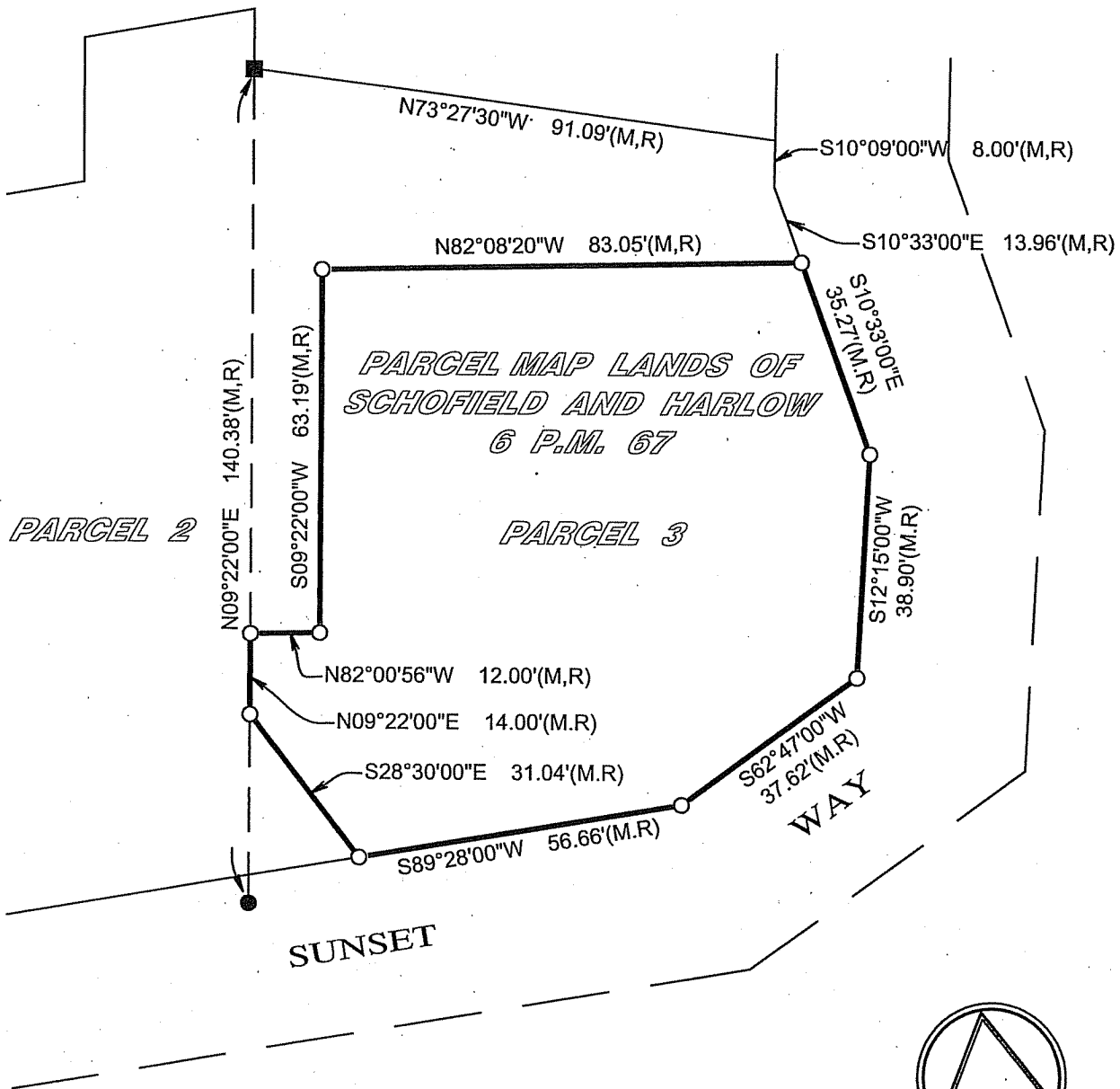
and examined and filed DECEMBER 14, 2010

Signed [Signature] P.L.S. or P.C.E. No. 7128

Title COUNTY SURVEYOR

County Surveyor's Comment \_\_\_\_\_





1" = 30'

**Legend**

- O = 3/4" iron pipe set (tagged LS 4483)
- = 1/2" iron pipe found (no tag)
- = 1" iron bolt found
- R = Parcel Map / Lands of Schofield and Harlow / 6 P.M. 67
- M = Measured
- C = Calculated