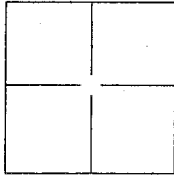


CORNER RECORD

Document Number APN 199-233-06
County of Marin, California

City of Muir Beach
Brief Legal Description Lot 14 - 5 RM 17



CORNER TYPE

Government Corner Control
Meander Property
Rancho Other

Date of Survey August 5, 2014

COORDINATES(Optional)

N. _____
E. _____
Zone _____ NAD27 NAD83
NAD83 Epoch _____
Elev. _____
Vert. Datum: NGVD29 NADV88
Meas. Units: Metric Imperial

Corner - Left as found Found and tagged Established Reestablished Rebuilt

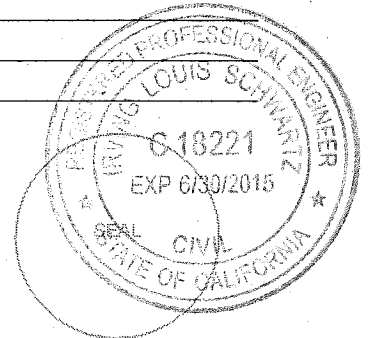
Identification and type of corner found: Evidence used to identify or procedure used to establish or reestablish the corner:
Found 3/4" iron pipe, not tagged, in monument well and found mag nail w/ 1.5" brass washer stamped
"PLS 4694", both as shown on Corner Record for APN 199-232-04 filed 10/23/2012 w/ County of Marin Public
Works were held for Basis of Bearings for survey taken as S 48°44'00" E. Said iron pipe and brass washer are
a measured distance apart of 224.36 feet, same as calculated from referenced Corner Record.

A description of the physical condition of the monument as found and as set or reset: _____
Set 3/4" iron pipe (3) and 1/2" rebar (2) with yellow cap stamped with "RCE 18221" at property corner
locations as shown on Exhibit A, Page 2 of 2.

SURVEYOR'S STATEMENT

This Corner Record was prepared by me or under my direction in conformance with
the Land Surveyor's Act on August 18, 2014

Signed [Signature] P.L.S. or R.C.E. No.: 18221



COUNTY SURVEYOR'S STATEMENT

This Corner Record was received 08/20, 2014 and examined
and filed SEPTEMBER 2, 2014

Signed [Signature] P.L.S. or R.C.E. No.: _____

Title DEPUTY

County Surveyor's Comment _____



- REFERENCES**
- ① CORNER RECORD FOR APN 199-232-04 FILED 10/23/2012
 - ② 11 OS 83
 - ③ 2001 RS 17
 - ④ 5 RM 17

LEGEND

- FND SURVEY MON. AS NOTED
 - SET 3/4" IRON PIPE W/ YELLOW CAP EMBOSSED "RCE 18221"
 - ⊗ SET 1/2" REBAR W/ YELLOW CAP EMBOSSED "RCE 18221"
- 17.20'(15.65' ④) RECORD DATA DIFFERS FROM MEASURED PER REFERENCE AS NOTED

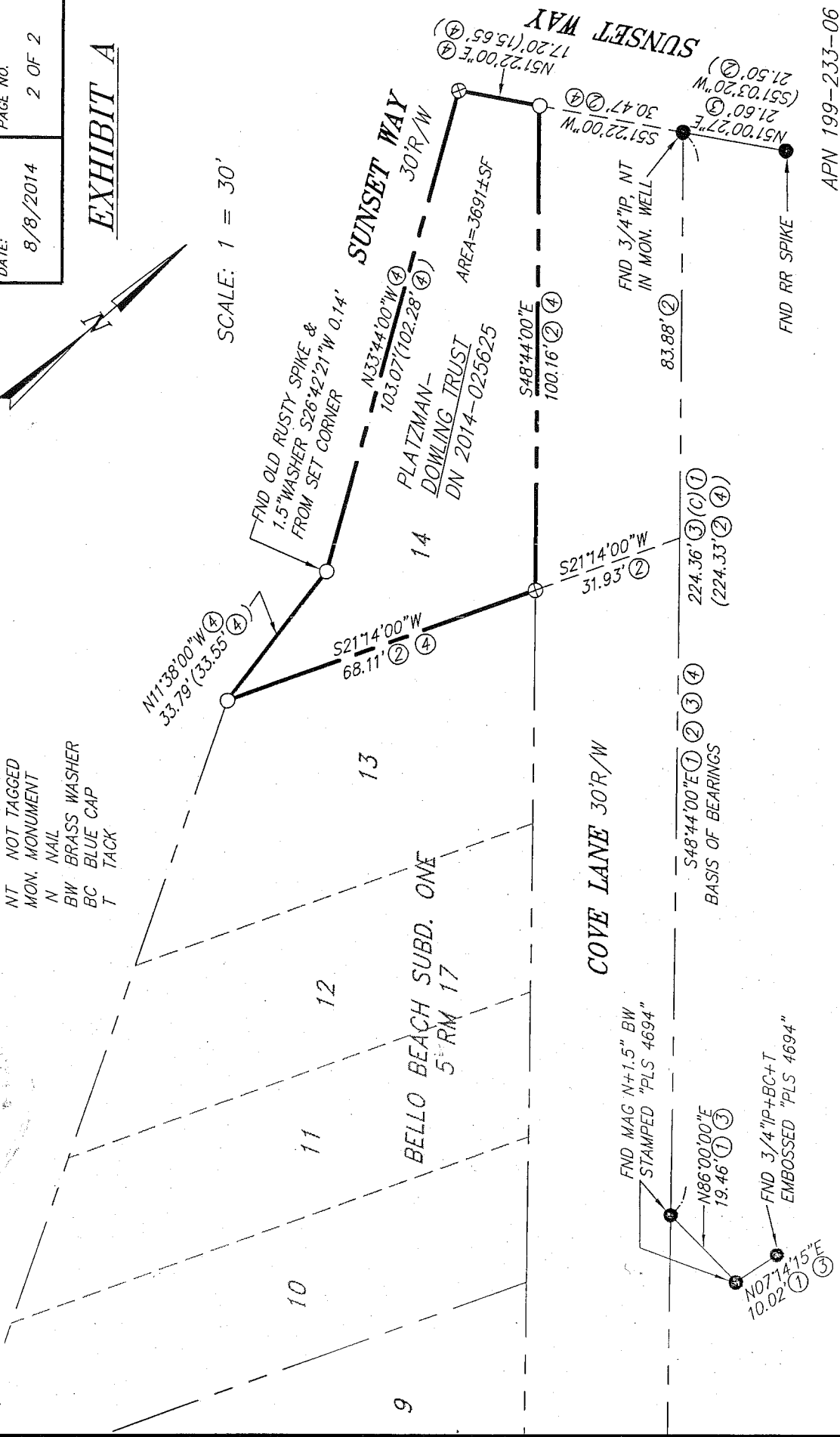
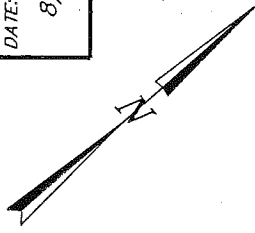
- FND FOUND
- IP IRON PIPE
- NT NOT TAGGED
- MON. MONUMENT
- N NAIL
- BW BRASS WASHER
- BC BLUE CAP
- T TACK

ILS ASSOCIATES, INC.®
 Civil Engineering & Land Surveying
 79 Galli Drive, Suite A
 Novato, Ca 94949-5717
 (415)883-9200 FAX (415)883-2763

DRAWN: SW	JOB NO: 8889
DATE: 8/8/2014	PAGE NO: 2 OF 2

EXHIBIT A

SCALE: 1 = 30'



APN 199-233-06