

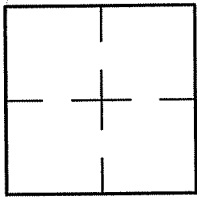
CORNER RECORD

Document Number A.P. 199-232-04

City of MUIR BEACH

County of MARIN, California

Brief Legal Description 33 O.S. 75, 2001 M 17



CORNER TYPE		COORDINATES (Optional)	
Government Corner	<input type="checkbox"/>	Control	<input type="checkbox"/>
Meander	<input type="checkbox"/>	Property	<input checked="" type="checkbox"/>
Rancho	<input type="checkbox"/>	Other	<input type="checkbox"/>
Date of Survey <u>08/2012</u>			

N. _____
 E. _____
 Zone _____ NAD27 NAD83
 NAD83 Epoch _____
 Elev. _____
 Vert. Datum: NGVD29 NAVD88
 Meas. Units: Metric Imperial

Corner- Left as found Found and tagged Established Reestablished Rebuilt

Identification and type of corner found: Evidence used to identify or procedure used to establish or reestablish the corner:
REESTABLISHED PORTIONS OF THE BOUNDARY LINES AS SHOWN ON 33 O.S. 75 AND 2001 M 17 USING
POINTS THAT ARE SHOWN ON BOTH MAPS AND AS SHOWN ON SHEET 2.

A description of the physical condition of the monument as found and as set or reset: SEE SHEET 2.

SURVEYOR'S STATEMENT

This Corner Record was prepared by me or under my direction in conformance with

the Land Surveyor's Act on SEPTEMBER 20, 2012

Signed Lawrence P. Doyle P.L.S. or R.C.E. No. P.L.S. 4694



COUNTY SURVEYOR'S STATEMENT

This Corner Record was received SEPTEMBER 26, 2012

and examined and filed OCTOBER 23, 2012

Signed [Signature] P.L.S. or R.C.E. No. 7128

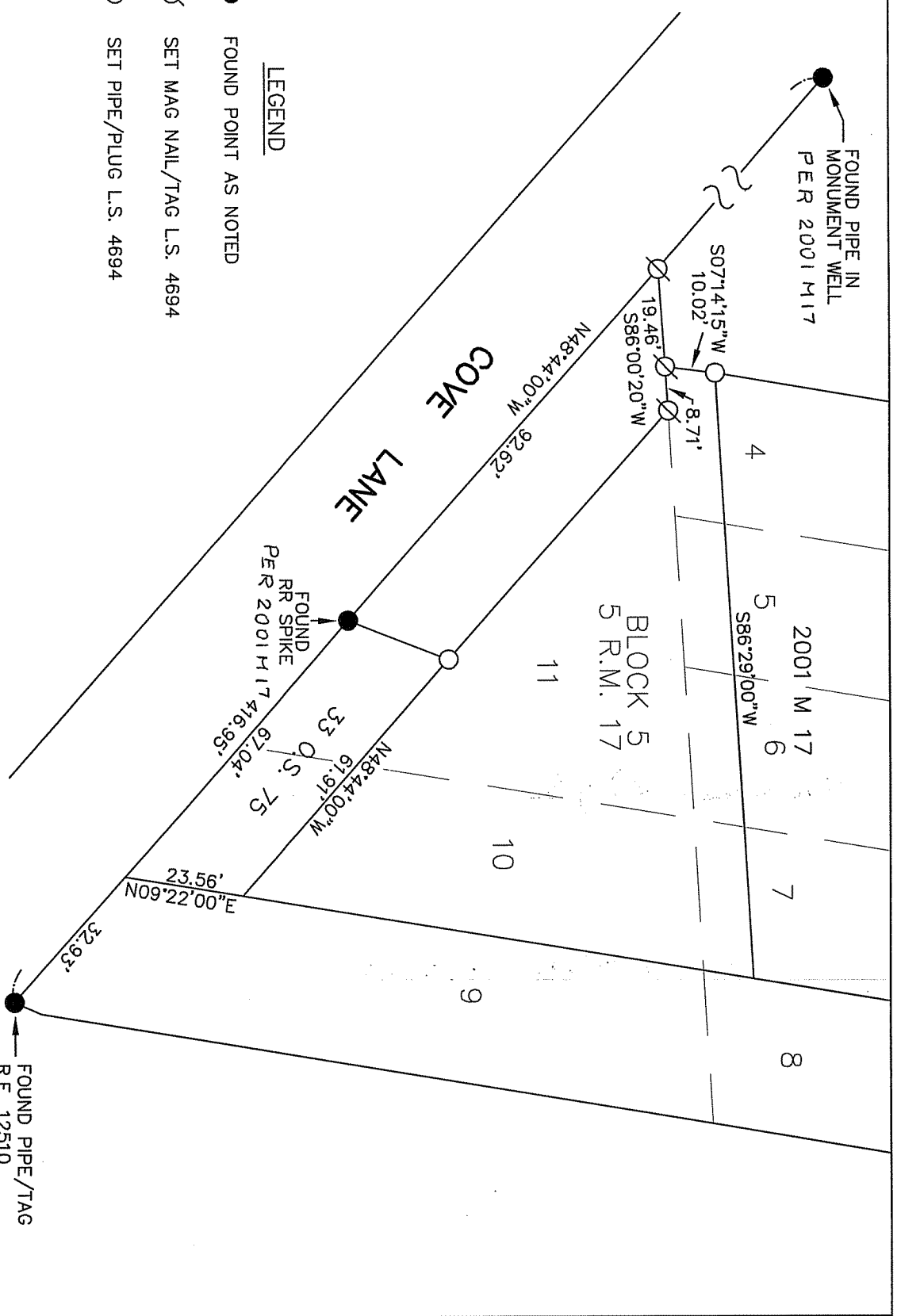
Title COUNTY SURVEYOR

County Surveyor's Comment _____





FOUND PIPE IN MONUMENT WELL PER 2001 M 17

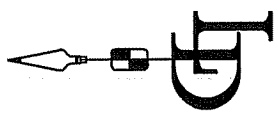


LEGEND

- FOUND POINT AS NOTED
- ∅ SET MAG NAIL/TAG L.S. 4694
- SET PIPE/PLUG L.S. 4694

BASIS OF BEARING

THE BASIS OF BEARING IS N48°44'00"W BETWEEN A FOUND PIPE/TAG R.E. 12510 AND A FOUND PIPE IN A MONUMENT WELL PER 33 O.S. 75 AND 2001 M 17.



CORNER RECORD	
33 O.S. 75, 2001 M 17	
MARIN COUNTY CALIFORNIA	
LAWRENCE P. DOYLE	
LAND SURVEYOR/CIVIL ENGINEER	
100 HELENS LANE MILL VALLEY CA 94941 (415-388-9585)	
SCALE: 1" = 30'	DRAWN BY:
DATE: 8/2012	SHEET 2 OF 2
DRAWING NO. 2238	