

CORNER RECORD



JERRICO ASSOCIATES
SUITE 27
77 MARK DRIVE
SAN RAFAEL, CA 94903

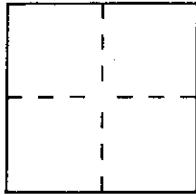
7109

Document Number 199-224-24

City of Muir Beach

County of Marin, California

Brief Legal Description Lots 6,7, 19 Block 3 Bello Beach Sub. 1, 5 RM 17



CORNER TYPE

COORDINATES
(Optional)

Government Corner Control
Meander Property
Rancho Other
Date of Survey December 21, 1994

N _____
E _____
Zone _____ Datum _____
Elev. _____

Corner — Left as found Found and tagged Established Reestablished Rebuilt

Identification and type of corner found: Evidence used to identify or procedure used to establish or reestablish the corner:

- (A) Found 3/4" IP RCE illegible.
- (B) Found old 1/2" IP.
- (C) Found rebar LS 4694
- (D) Found rebar LS 4694

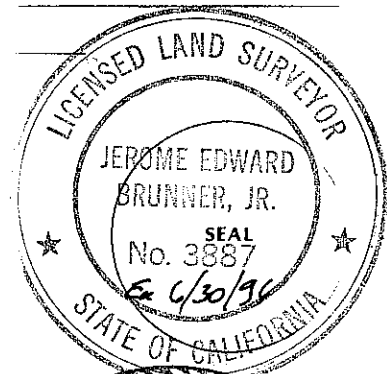
A description of the physical condition of the monument as found and as set or reset: _____

- (E) Set nail/LS 3887 in conc.
- (F) Set #5 rebar/cap LS 3887.
- (G) Set #5 rebar/cap LS 3887
- (H) Set tk/LS 3887 in fence runner.

SURVEYOR'S STATEMENT

This Corner Record was prepared by me or under my direction in conformance with the Land Surveyors' Act on December 21, 19 94.

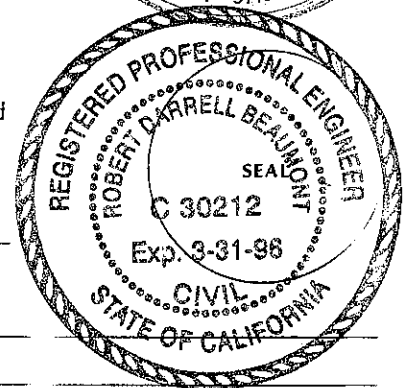
Signed JEB Brunner L.S. or R.C.E. Number LS 3887



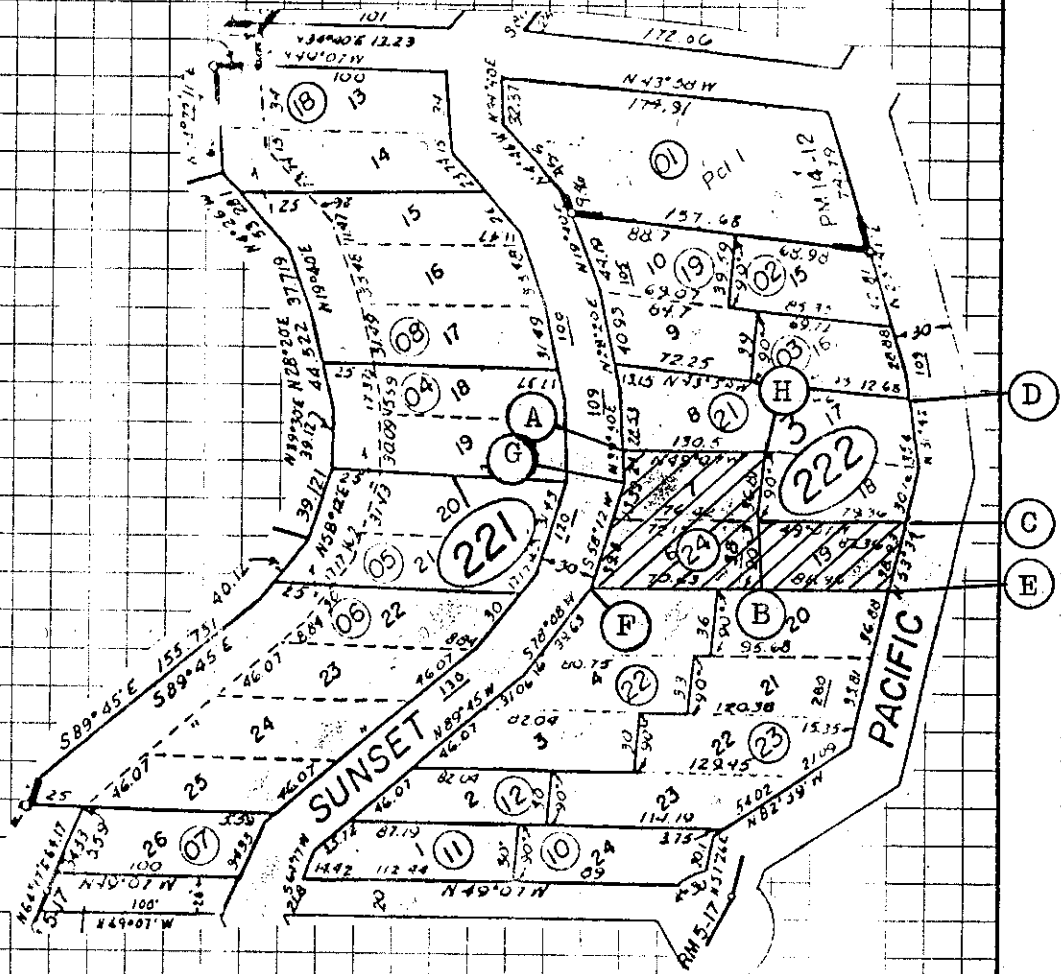
COUNTY SURVEYOR'S STATEMENT

This Corner Record was received 1-27 1995 and examined and filed 1-27 1995.

Signed RDB Title DES



County Surveyor's Comment _____



Bello Beach Sub. I, R.M. BK. 5, Pg. 17