

CORNER RECORD



JERRICO ASSOCIATES

SUITE 27
77 MARK DRIVE
SAN RAFAEL, CA 94903

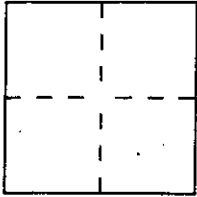
7138

Document Number 199-221-18

City of Muir Beach

County of Marin, California

Brief Legal Description Lot 13 & 14 Block 1 Bello Beach Sub. 1 5 RM 17



CORNER TYPE

Government Corner Control
Meander Property
Rancho Other
Date of Survey May 18, 1995

COORDINATES (Optional)

N. _____
E. _____
Zone _____ Datum _____
Elev. _____

Corner — Left as found Found and tagged Established Reestablished Rebuilt

Identification and type of corner found: Evidence used to identify or procedure used to establish or reestablish the corner:

(A) Fd. 3/4" IP in 2" IP in conc.

(B) Fd. 1/2 " IP

A description of the physical condition of the monument as found and as set or reset:

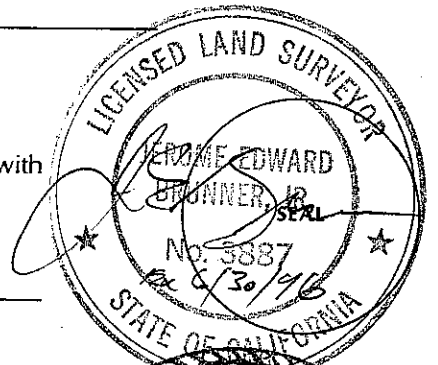
(F)(E)(D)(C) Set #5 rebar and wired tag LS 3887

(G)(H) Set rebar and cap LS 3887

SURVEYOR'S STATEMENT

This Corner Record was prepared by me or under my direction in conformance with the Land Surveyors' Act on May 18 1995.

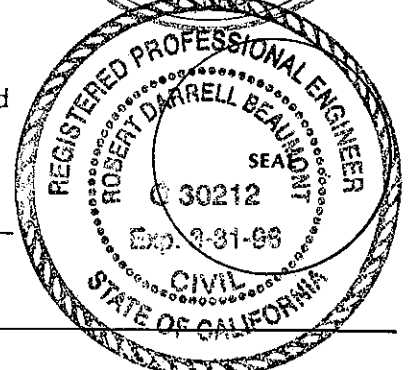
Signed [Signature] L.S. or R.C.E. Number LS 3887



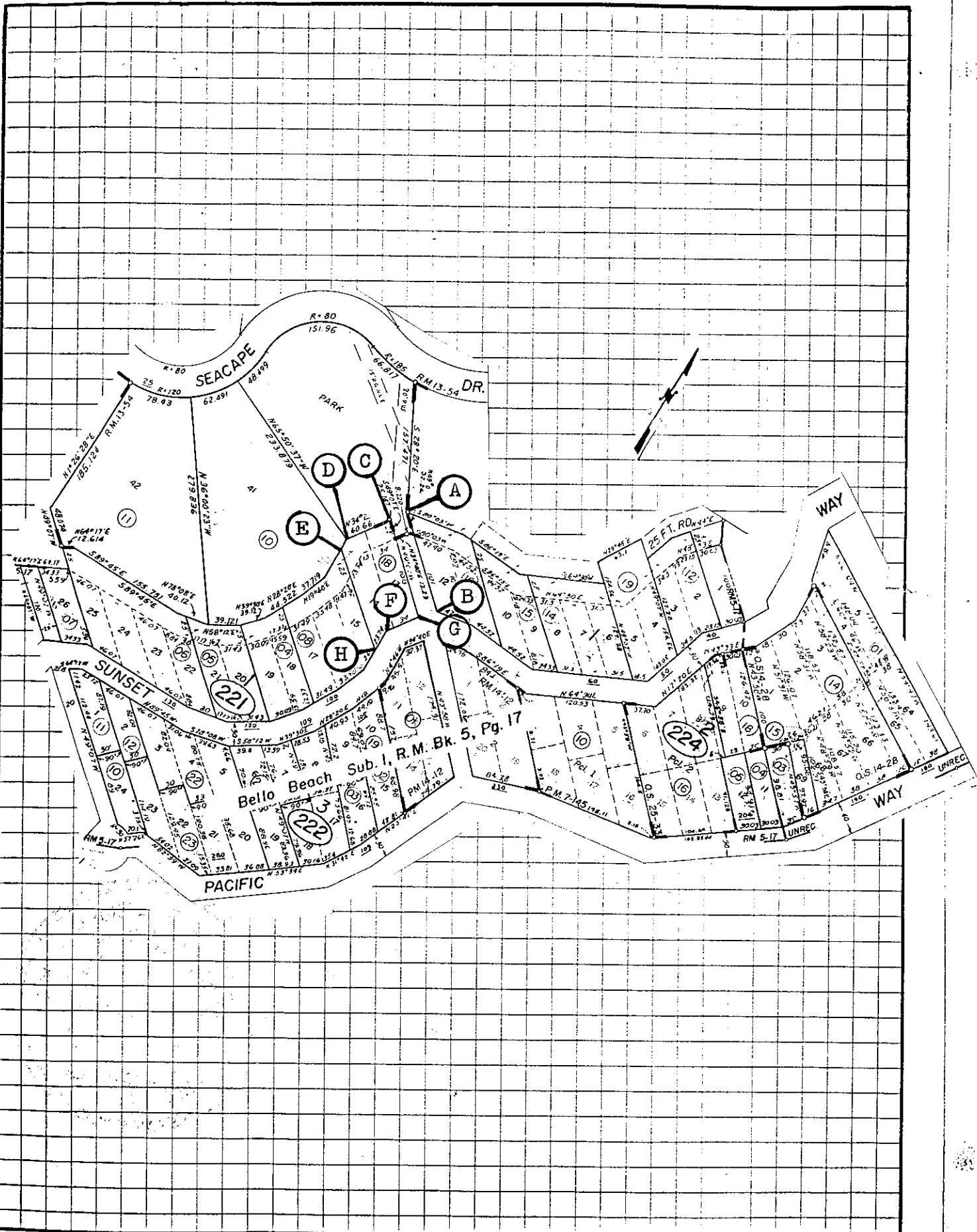
COUNTY SURVEYOR'S STATEMENT

This Corner Record was received 5-24 1995 and examined and filed 5-24 1995.

Signed [Signature] Title Des



County Surveyor's Comment





JERRICO ASSOCIATES
 SUITE 27
 77 MARK DRIVE
 SAN RAFAEL, CA 94903

7435
 see 7138

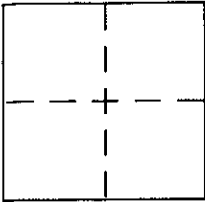
CORNER RECORD

Document Number 199-221-18

City of Muir Beach

County of Marin, California

Brief Legal Description Lot 13 and 14, Block 1 Bello Beach Sub. 1 5 RM 17



CORNER TYPE

Government Corner Control
 Meander Property
 Rancho Other
 Date of Survey July 18, 2001

COORDINATES (Optional)

N. _____
 E. _____
 Zone _____ NAD27 NAD83
 NAD83 Epoch _____
 Elev. _____
 Vert. Datum: NGVD29 NAVD88
 Meas. Units: Metric Imperial

Corner - Left as found Found and tagged Established Reestablished Rebuilt

Identification and type of corner found: Evidence used to identify or procedure used to establish or reestablish the corner:

- G** Found 3/4" IP in 2" IP in cone.
- H** Found 1/2" IP.
- A B C** Found rebar and cap LS 3887.
- F** Found rebar/ no cap, re-capped w/LS 3887.

A description of the physical condition of the monument as found and as set or reset:

- E D** Re-set rebar and cap LS 3887.

SURVEYOR'S STATEMENT

This Corner Record was prepared by me or under my direction in conformance with the Land Surveyor's Act on July 18, 2001

Signed [Signature] P.L.S or R.C.E. No. LS 3887

COUNTY SURVEYOR'S STATEMENT

This Corner Record was received July 19, 2001

and examined and filed July 19, 2001

Signed [Signature] P.L.S or R.C.E. No. 7128

Title DEPUTY

County Surveyor's Comment _____

