

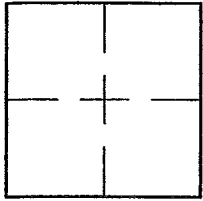
CORNER RECORD

Document Number A.P. 199-221-05

City of MUIR BEACH

County of MARIN, California

Brief Legal Description 2015 M 64



CORNER TYPE

COORDINATES (Optional)

Government Corner

Control

Meander

Property

Rancho

Other

Date of Survey 2/9/16

N. \_\_\_\_\_

E. \_\_\_\_\_

Zone            NAD27  NAD83

NAD83 Epoch \_\_\_\_\_

Elev. \_\_\_\_\_

Vert. Datum: NGVD29  NAVD88

Meas. Units: Metric  Imperial

Corner- Left as found  Found and tagged  Established  Reestablished  Rebuilt

Identification and type of corner found: Evidence used to identify or procedure used to establish or reestablish the corner:

SET ADDITIONAL POINTS BETWEEN A FOUND NAIL/TAG IN DRIVEWAY AND A FOUND 3/4" PIPE/PLUG PER 2015 M 64 AND AS SHOWN ON SHEET 2.

A description of the physical condition of the monument as found and as set or reset: SEE SHEET 2.

SURVEYOR'S STATEMENT

This Corner Record was prepared by me or under my direction in conformance with

the Land Surveyor's Act on FEBRUARY 10, 2016

Signed Lawrence P. Doyle P.L.S. or R.C.E. No. P.L.S. 4694



COUNTY SURVEYOR'S STATEMENT

This Corner Record was received FEBRUARY 19, 2016

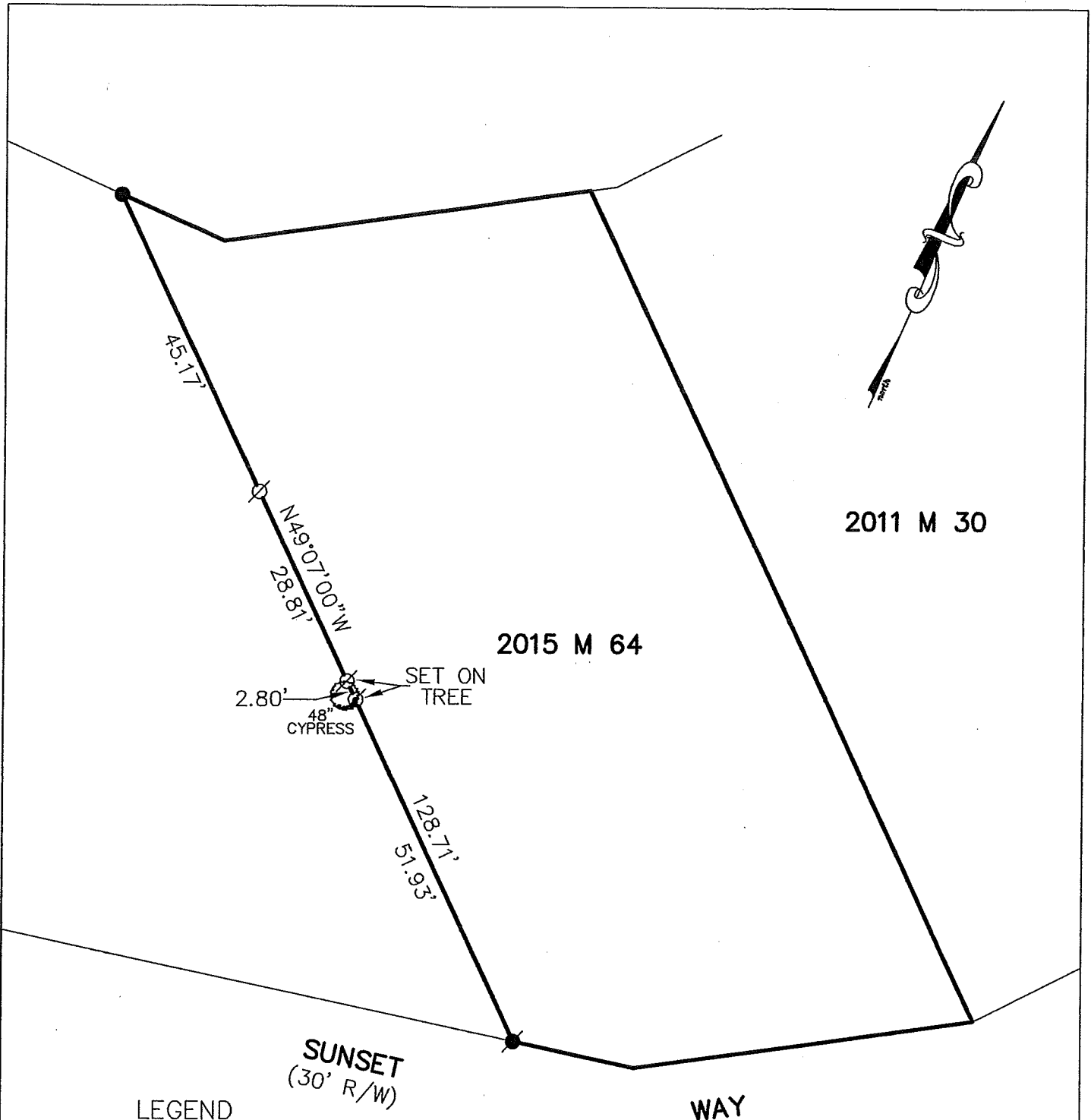
and examined and filed MARCH 11, 2016

Signed [Signature] P.L.S. or R.C.E. No. 7821

Title County Surveyor



County Surveyor's Comment \_\_\_\_\_



2011 M 30

2015 M 64

2.80'  
48" CYPRESS  
SET ON TREE

SUNSET  
(30' R/W)

WAY

LEGEND

- FOUND 3/4" PIPE/PLUG L.S. 5814 PER 2015 M 64
- ⊙ FOUND NAIL/TAG L.S. 5814 PER 2015 M 64
- ∅ SET NAIL/TAG L.S. 4694

BASIS OF BEARING

THE BASIS OF BEARING FOR THIS SURVEY IS N49°07'00"W BETWEEN FOUND 3/4" PIPES/PLUGS L.S. 5814 PER 2015 M 64



<b>CORNER RECORD</b>		
2015 M 64		
MUIR BEACH	MARIN COUNTY	CALIFORNIA
SCALE: 1" = 20'	DRAWN BY:	
DATE: 2/10/16	<b>LAWRENCE P. DOYLE</b>	
LAND SURVEYOR/CIVIL ENGINEER		
100 HELENS LANE MILL VALLEY CA 94941 (415-388-9585)		
DRAWING NO.		2565