

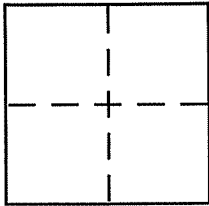
CORNER RECORD

Document Number \_\_\_\_\_

City of MUIR BEACH

County of MARIN, California

Brief Legal Description LOT 19, MAP OF SEACAPE, VOLUME 13 MAPS AT PAGE 54



CORNER TYPE

- Government Corner  Control
- Meander  Property
- Rancho  Other
- Date of Survey \_\_\_\_\_

COORDINATES (Optional)

- N. \_\_\_\_\_
- E. \_\_\_\_\_
- Zone \_\_\_\_\_ NAD27  NAD83
- NAD83 Epoch \_\_\_\_\_
- Elev. \_\_\_\_\_
- Vert. Datum: NGVD29  NAVD88
- Meas. Units: Metric  Imperial

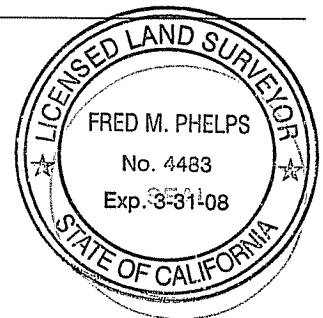
Corner - Left as found  Found and tagged  Established  Reestablished  Rebuilt

Identification and type of corner found: Evidence used to identify or procedure used to establish or reestablish the corner:  
Found 5/8" rebar tagged LS 7053 at the Southeast and Southwest corners of "LANDS OF M.B.C.S.D." per Volume 13 MAPS 54 at "Fd. COR. Hub" positions. Used said rebar as basis of bearing (S63°58'W, 150.00) MEASURED AND RECORD to reestablish Lot 19 Lot LINES AS SHOWN ON PAGE 2 OF 2 HEREIN.

A description of the physical condition of the monument as found and as set or reset:  
Set 3/4" iron pipe monuments tagged LS 4483 at record positions per said "MAP OF SEACAPE" Vol. 13 MAPS 54, for Lot 19 as shown on page 2 of 2 herein.

SURVEYOR'S STATEMENT

This Corner Record was prepared by me or under my direction in conformance with the Land Surveyor's Act on JULY 27, 2006  
 Signed FRED M. PHELPS P.L.S. or R.C.E. No. LS 4483



COUNTY SURVEYOR'S STATEMENT

This Corner Record was received JULY 31, 2006  
 and examined and filed AUGUST 18, 2006  
 Signed \_\_\_\_\_ P.L.S. or R.C.E. No. 7128  
 Title COUNTY SURVEYOR

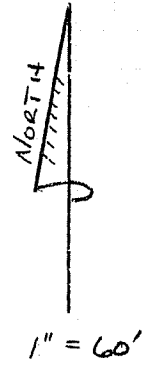


County Surveyor's Comment \_\_\_\_\_

\*NOTE: MAP BEARING SHOWN AS  $S3^{\circ}55'W$ ; OBVIOUS DRAFTING ERROR WHEN HOLDING OTHER MAP INFORMATION 13 MAPS 54.

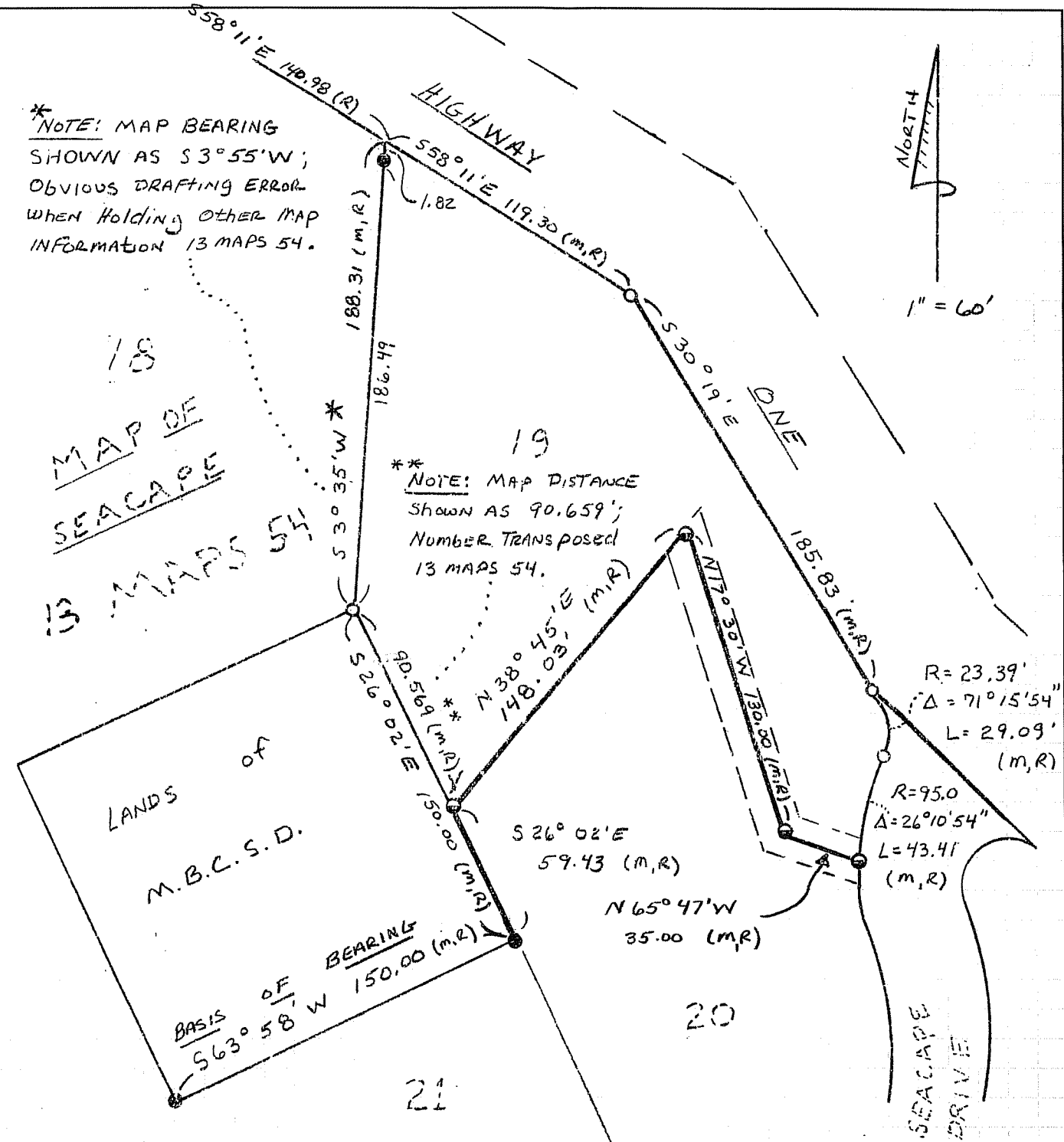
18  
MAP OF SEACAPE  
13 MAPS 54

19  
\*\*NOTE: MAP DISTANCE SHOWN AS 90.659'; NUMBER TRANSPOSED 13 MAPS 54.



LANDS OF M.B.C.S.D.

BASIS OF BEARING  
 $S63^{\circ}58'W$  150.00 (M,R)



○ - 3/4" IRON PIPE, SET (TAGGED LS4483)

⊙ - 3/4" IRON PIPE, FOUND (TAGGED LS4483)

⊙ - 5/8" REBAR, FOUND (TAGGED LS7053)

} SEE PREVIOUSLY FILED CORNER RECORDS  
APN 199-201-03-04

M - MEASURED

R - RECORD (BOOK 13 OF MAPS, PAGE 54)