

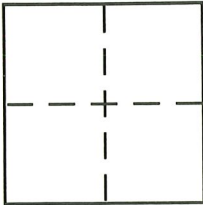
CORNER RECORD

Document Number _____

City of MUIR BEACH

County of MARIN, California

Brief Legal Description LOT 19, MAP OF SEACAPE, Volume 13 OF MAPS AT Page 54



CORNER TYPE

- Government Corner Control
- Meander Property
- Rancho Other
- Date of Survey _____

COORDINATES (Optional)

- N. _____
- E. _____
- Zone _____ NAD27 NAD83
- NAD83 Epoch _____
- Elev. _____
- Vert. Datum: NGVD29 NAVD88
- Meas. Units: Metric Imperial

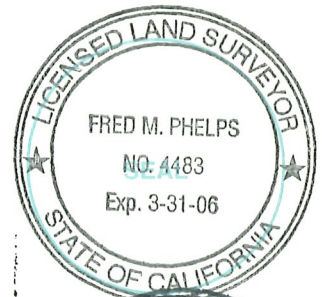
Corner - Left as found Found and tagged Established Reestablished Rebuilt

Identification and type of corner found: Evidence used to identify or procedure used to establish or reestablish the corner:
Found 5/8" REBAR tagged LS 7053 at the Southeast and Southwest
CORNERS of "LANDS of M.B.C.S.D." per Volume 13 MAPS page 54 at "Fd. Cor.
Hub" positions. Used said rebar as basis of bearing (S63°58'W, 150.00)
measured and record to reestablish LOT 19 southerly LOT LINES
AS SHOWN ON PAGE 2 OF 2 HEREIN.

A description of the physical condition of the monument as found and as set or reset:
Set 3/4" IRON PIPE MONUMENTS, tagged LS 4483, at record
positions per said "MAP OF SEACAPE" Vol. 13 MAPS 54, for LOT
19 southerly LINES AS SHOWN ON PAGE 2 OF 2 HEREIN.

SURVEYOR'S STATEMENT

This Corner Record was prepared by me or under my direction in conformance with
 the Land Surveyor's Act on 10-18-2005
 Signed Fred M. Phelps P.L.S. or R.C.E. No. LS 4483

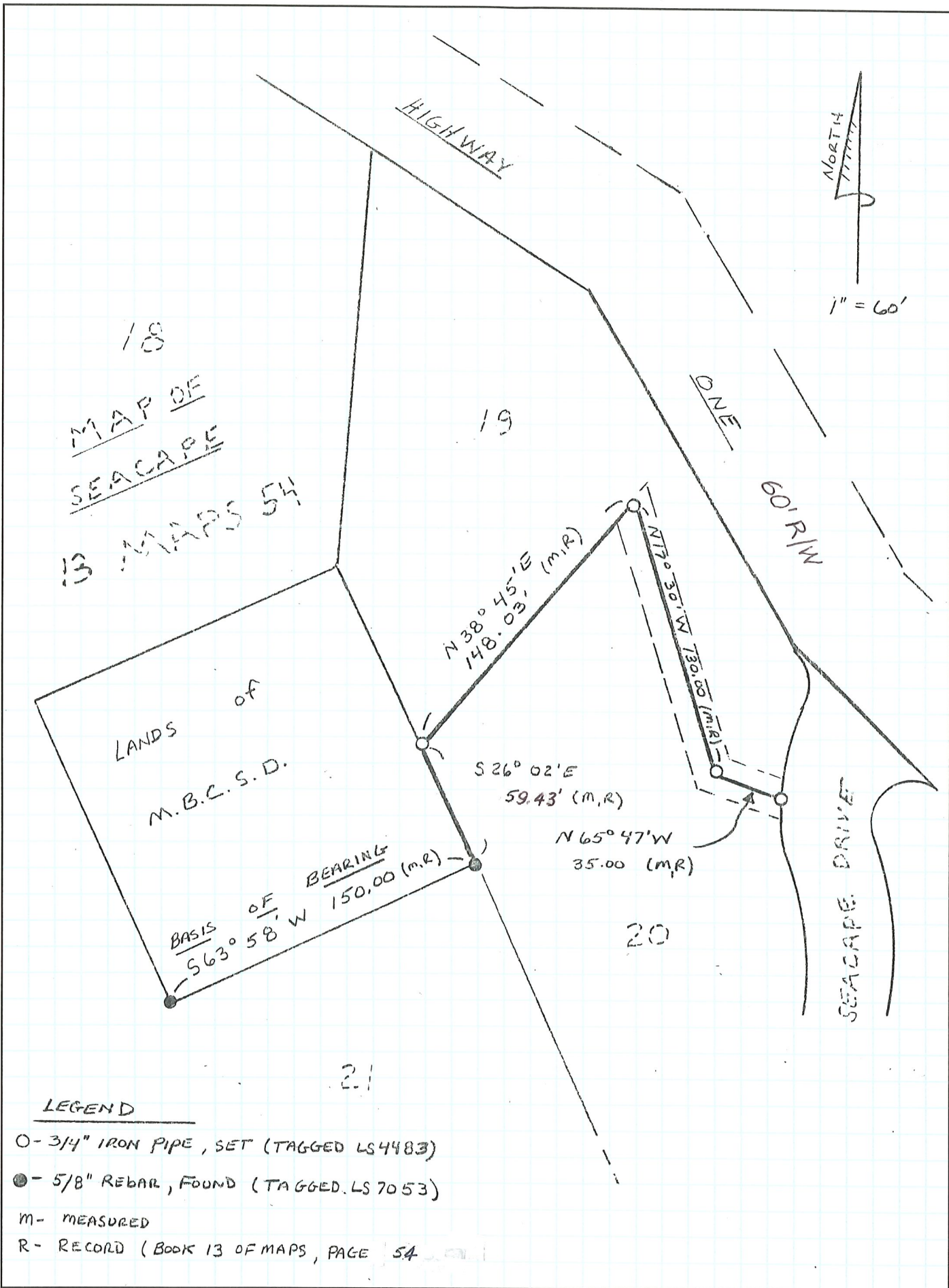


COUNTY SURVEYOR'S STATEMENT

This Corner Record was received OCTOBER 21, 2005
 and examined and filed NOVEMBER 29, 2005
 Signed [Signature] P.L.S. or R.C.E. No. 7128
 Title COUNTY SURVEYOR



County Surveyor's Comment _____



LEGEND

○ - 3/4" IRON PIPE, SET (TAGGED LS4483)

● - 5/8" REBAR, FOUND (TAGGED LS7053)

M - MEASURED

R - RECORD (BOOK 13 OF MAPS, PAGE 54)