

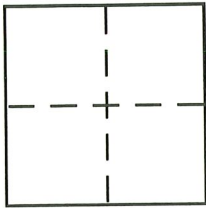
CORNER RECORD

Document Number _____

City of MUIR BEACH

County of MARIN, California

Brief Legal Description LOT 19, MAP OF SEACAPE, VOLUME 13 MAPS AT PAGE 54



CORNER TYPE

- Government Corner Control
- Meander Property
- Rancho Other
- Date of Survey _____

COORDINATES (Optional)

- N. _____
- E. _____
- Zone _____ NAD27 NAD83
- NAD83 Epoch _____
- Elev. _____
- Vert. Datum: NGVD29 NAVD88
- Meas. Units: Metric Imperial

Corner - Left as found Found and tagged Established Reestablished Rebuilt

Identification and type of corner found: Evidence used to identify or procedure used to establish or reestablish the corner:
Found 5/8" Rebar tagged LS 7053 at the Southeast and Southwest corners
of "LANDS OF M.B.C.S.D." per Volume 13 MAPS 54 AT "Fd. COR. Hub" positions.
Used SAID REBAR AS BASIS OF BEARING (S 63° 58' W, 150.00)
MEASURED AND RECORD TO REESTABLISH LOT 19 Lot
LINES AS SHOWN ON PAGE 2 OF 2 HEREIN.

A description of the physical condition of the monument as found and as set or reset:
Set 3/4" iron pipe monuments tagged LS 4483 at record
positions per SAID "MAP OF SEACAPE" Vol. 13 MAPS 54, for
LOT 19 AS SHOWN ON PAGE 2 OF 2 HEREIN.

SURVEYOR'S STATEMENT

This Corner Record was prepared by me or under my direction in conformance with
 the Land Surveyor's Act on JULY 27, 2006
 Signed FRED M. PHELPS P.L.S. or R.C.E. No. LS 4483

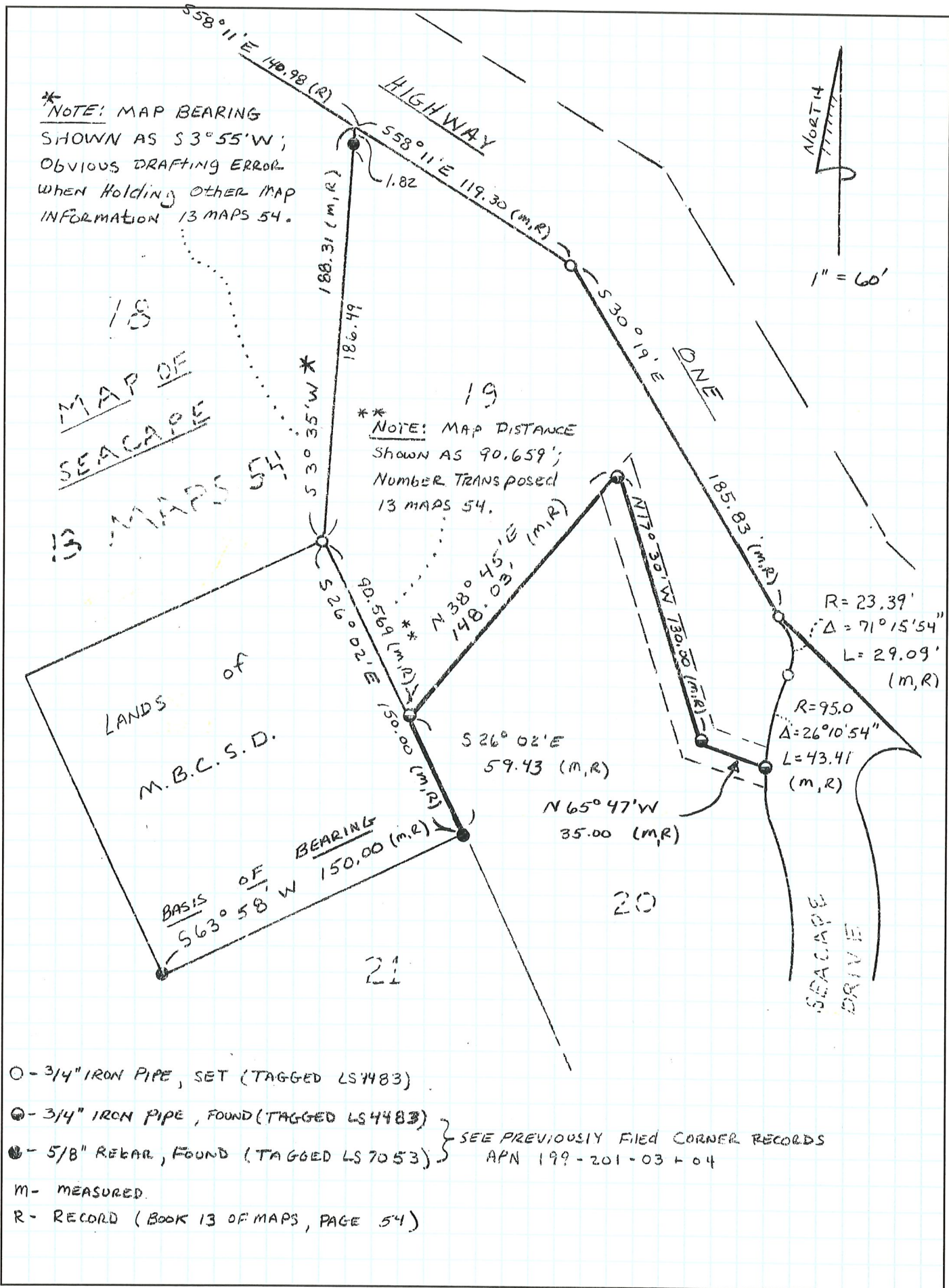


COUNTY SURVEYOR'S STATEMENT

This Corner Record was received JULY 31, 2006
 and examined and filed AUGUST 18, 2006
 Signed [Signature] P.L.S. or R.C.E. No. 7128
 Title COUNTY SURVEYOR



County Surveyor's Comment _____



○ - 3/4" IRON PIPE, SET (TAGGED LS4483)

● - 3/4" IRON PIPE, FOUND (TAGGED LS4483)

● - 5/8" REBAR, FOUND (TAGGED LS7053)

} SEE PREVIOUSLY FILED CORNER RECORDS
APN 199-201-03-04

M - MEASURED.

R - RECORD (BOOK 13 OF MAPS, PAGE 54)