

CORNER RECORD

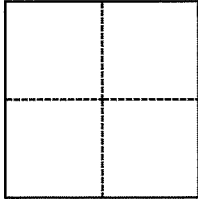
Agency Index 20-061

Document Number APN 199-201-03

City of Unincorporated County of Marin, California

Brief Legal Description Lot 18, Map of Seacape, 13 RM 54, Marin County Records.

CORNER TYPE



- Government Corner
- Meander
- Rancho
- Control
- Property
- Other

Date of Survey July 16, 2020

COORDINATES (Optional)

N. _____ E. _____

Elevation _____

Units Metric U.S. Survey Foot

Horizontal Datum _____

Zone _____ Epoch Date _____

Vertical Datum _____

Complies with Public Resources Code §§8801-8819

Complies with Public Resources Code §§8890-8902

PLS Act Ref.: 8765(d) 8771 8773 Other:

Corner/Monument: Left as found Established Rebuilt Pre-Construction

Found and tagged Reestablished Referenced Post-Construction

Narrative of corner identified and monument as found, set, reset, replaced, or removed:

See sheet #2 for description(s):

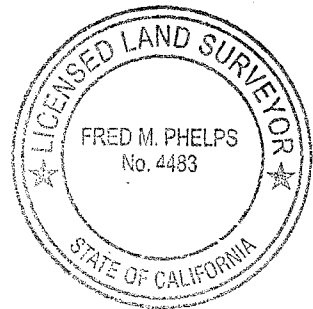
Found monumentation as shown on Map of Seacape, 13 RM 54, Marin County Records. Set 5/8" rebar tagged LS 4483, as shown on sheet 2.

SURVEYOR'S STATEMENT

This Corner Record was prepared by me or under my direction in conformance with

the Professional Land Surveyors' Act on July 20, 2020

Signed Fred M. Phelps P.L.S. or R.C.E. No. LS 4483



COUNTY SURVEYOR'S STATEMENT

This Corner Record was received _____

and examined and filed Nov. 3, 2021

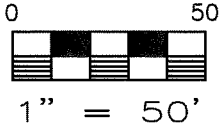
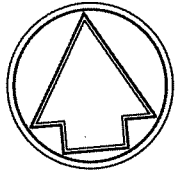
Signed _____ P.L.S. or R.C.E. No. 9292

Title DEPUTY

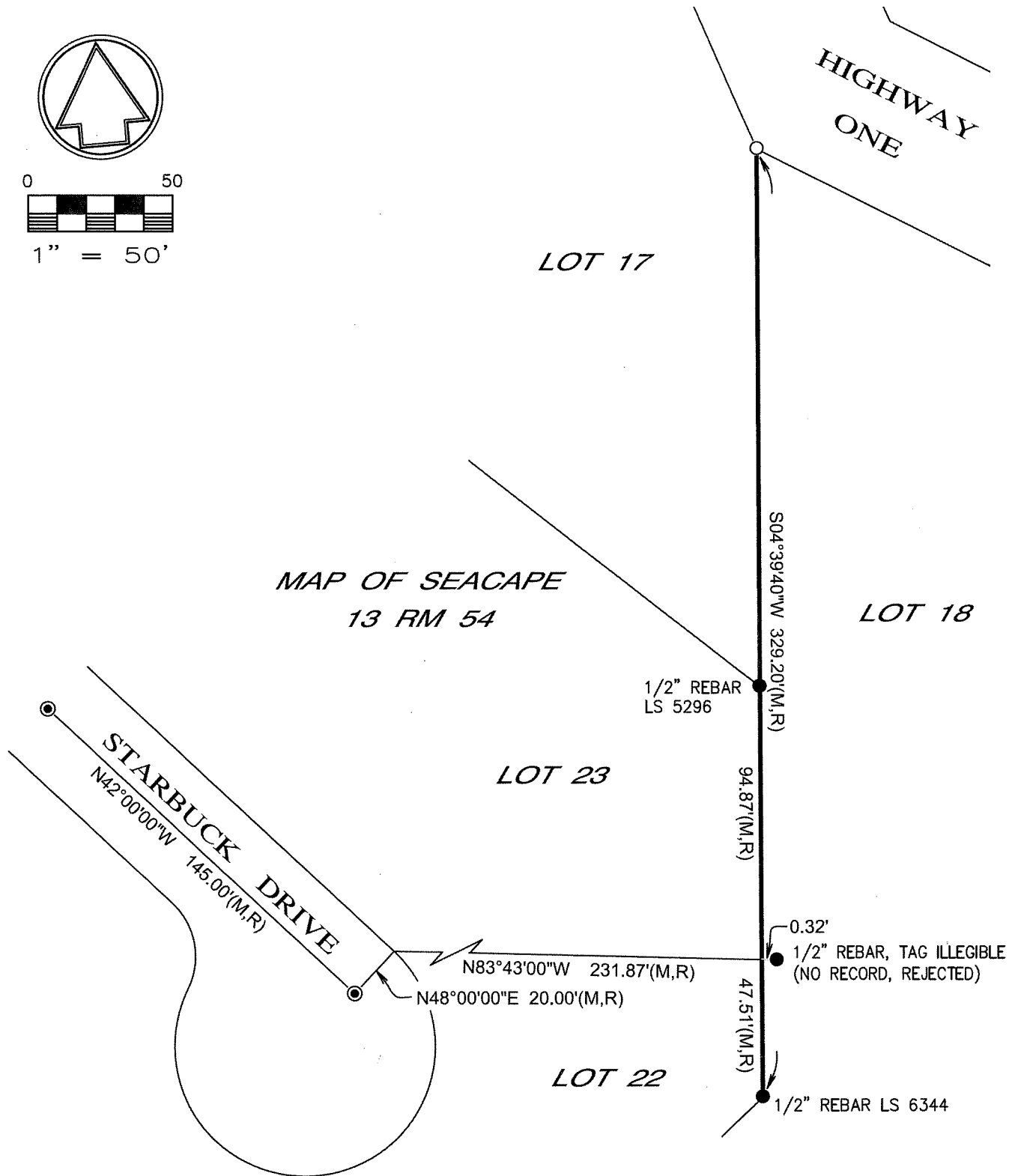
County Surveyor's Comment

APN 199-201-03





MAP OF SEACAPE
13 RM 54



Legend

- = 5/8" rebar set (tagged LS 4483)
- = Rebar found (size/tagged as noted)
- ⊙ = Pin in standard well monument found
- R = Seacape / 13 RM 54
- M = Measured
- IP = Iron pipe