

CORNER RECORD

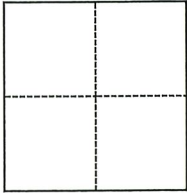
Agency Index

DPW#19-045

Document Number ADJ 197-110-05

City of FAIRFAX County of MARIN, California

Brief Legal Description MONUMENT SHOWN ON MAP 23 RS 14 NEAR LANDS OF BOY SCOUTS.



CORNER TYPE

- Government Corner
- Meander
- Rancho
- Control
- Property
- Other

Date of Survey _____

COORDINATES (Optional)

N. _____ E. _____

Elevation _____

Units Metric U.S. Survey Foot

Horizontal Datum _____

Zone _____ Epoch Date _____

Vertical Datum _____

Complies with Public Resources Code §§8801-8819

Complies with Public Resources Code §§8890-8902

PLS Act Ref.: 8765(d) 8771 8773 Other:

Corner/Monument: Left as found Established Rebuilt Pre-Construction

Found and tagged Reestablished Referenced Post-Construction

Narrative of corner identified and monument as found, set, reset, replaced, or removed:

See sheet #2 for description(s):

FOUND STANDARD STREET MONUMENT WITH BRASS DISC STAMPED R.C.E. 23341 NEAR THE LANDS OF THE BOY SCOUTS OF AMERICA AS SHOWN ON 23 RS 14; SET FOUR REFERENCE TIES; TO BE RE-ESTABLISHED WITH COUNTY OF MARIN WELL MONUMENT PER UCS DWG #300. (SEE ATTACHED SKETCH) NO DETERMINATION WAS MADE AS TO THE VALIDITY OF THE MONUMENT SHOWN HEREON OR ITS RELATION TO PROPERTY LINES IN THE AREA.

SURVEYOR'S STATEMENT

This Corner Record was prepared by me or under my direction in conformance with

the Professional Land Surveyors' Act on 06/20/22

Signed [Signature] P.L.S. or R.C.E. No. 9292



COUNTY SURVEYOR'S STATEMENT

This Corner Record was received MAY 9, 2019

and examined and filed 6/20/22

Signed [Signature] P.L.S. or R.C.E. No. 8176

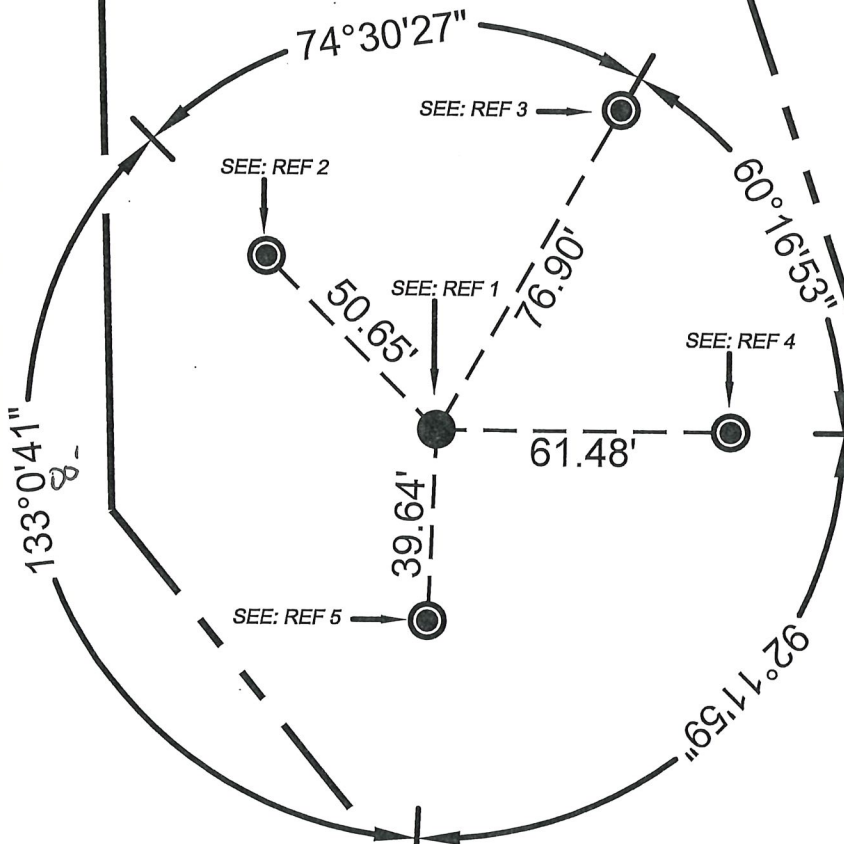
Title County Surveyor

County Surveyor's Comment



A.P.N.
174-070-38

LANDS OF
ROSS ETAL
23 RS 14



A.P.N.
197-110-05
#3125 SIR FRANCIS DRAKE BLVD

SIR FRANCIS DRAKE BLVD.

LANDS OF THE BOY
SCOUTS OF AMERICA AS
SHOWN ON 23 RS 14

- REF 1: FOUND STANDARD STREET MONUMENT WITH BRASS DISC STAMPED RCE 23341 PER 23 RS 14 REPLACED WITH STANDARD COUNTY MONUMENT PER UNIFORM CONST STANDARDS #300.
- REF 2: SET WASHER STAMPED "MARIN COUNTY SURVEYOR" ON TREE STUMP.
- REF 3: SET WASHER STAMPED "MARIN COUNTY SURVEYOR" IN SIDE OF TREE.
- REF 4: SET WASHER STAMPED "MARIN COUNTY SURVEYOR" IN SIDE OF TREE.
- REF 5: SET WASHER STAMPED "MARIN COUNTY SURVEYOR" ON UTILITY POLE STUMP.

COUNTY OF MARIN
DEPARTMENT OF PUBLIC WORKS
SURVEY SECTION

SCALE: 1"=40'

CORNER RECORD

JOB No. 2019-015