

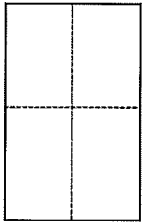
CORNER RECORD

Document Number APN 197-051-16

City of FAIRFAX

County of MARIN, California

Brief Legal Description Parcel One, 25 P.M. 53, Marin County Records



CORNER TYPE

Government Corner Control
Meaneder Property
Rancho Other
Date of Survey _____

COORDINATES (Optional)

N. _____
E. _____
Zone _____ NAD27 NAD83
NAD83 Epoch _____
Elev. _____
Vert. Datum: NGVD29 NAVD88
Meas. Units: Metric Imperial

Corner – Left as found Found and tagged Established Reestablished Rebuilt

Identification and type of corner found: Evidence used to identify or procedure used to establish or reestablish the corner:

Found front lot corners on Bolinas Rd. per 25 P.M. 53 (see reverse)

A description of the physical condition of the monument as found and as set or reset:

1/2" Iron Pipe tagged LS 7237 (see reverse)

SURVEYOR'S STATEMENT

This Corner Record was prepared by me or under my direction in conformance with

the Land Surveyor's Act on MARCH 4 2013

Signed Michael E. Ford P.L.S. or R.C.E. No. 7237



COUNTY SURVEYOR'S STATEMENT

This Corner Record was received MARCH 11, 2013

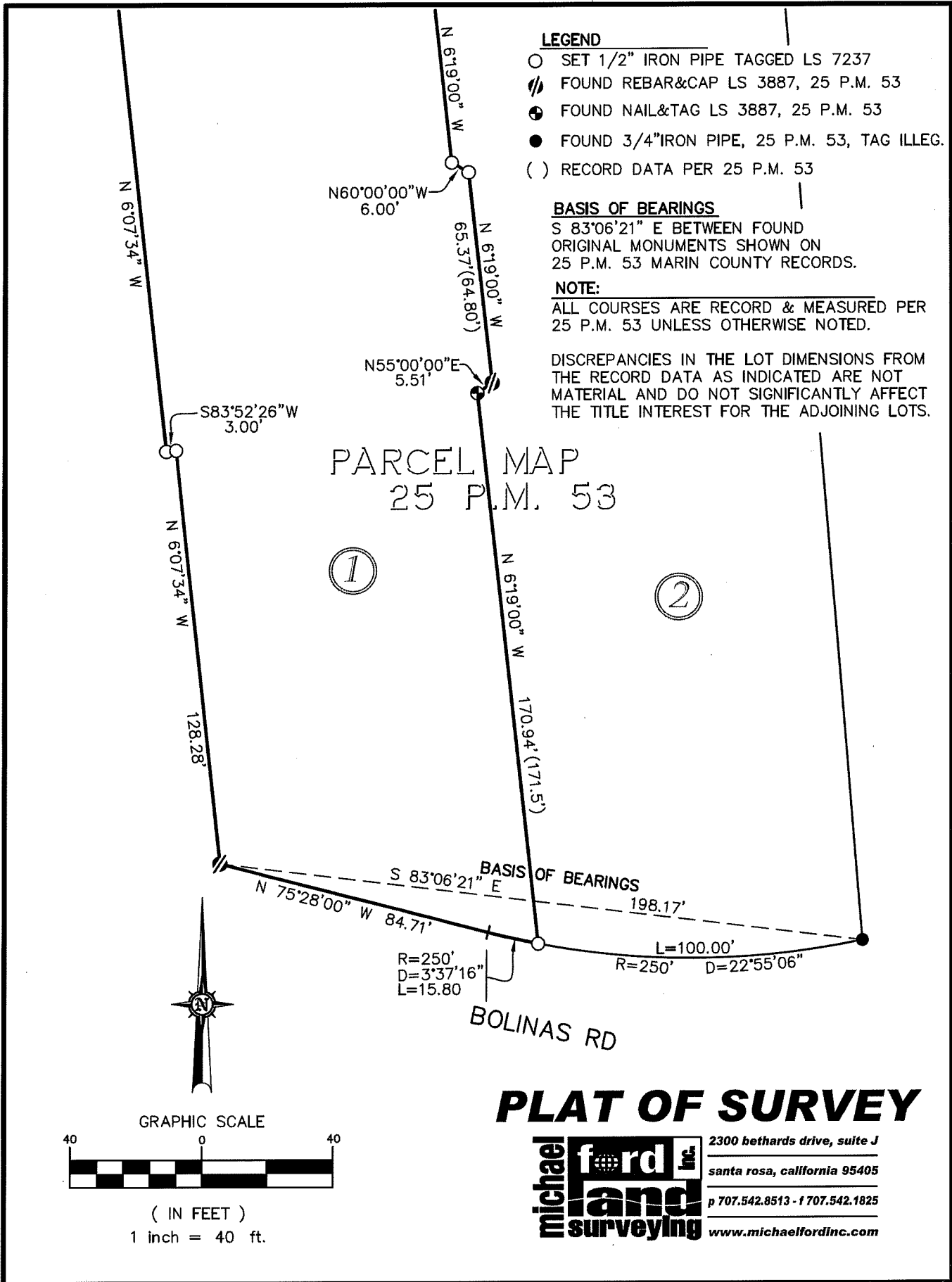
and examined and filed APRIL 17, 2013

Signed Richard G. Simonitch P.L.S. or R.C.E. No. 7128

Title DEP. COUNTY SURVEYOR



County Surveyor's Comment



PLAT OF SURVEY



2300 bethards drive, suite J
santa rosa, california 95405
p 707.542.8513 - f 707.542.1825
www.michaelfordinc.com