

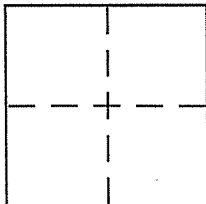
CORNER RECORD

Document Number 195-340-74

City of Stinson Beach

County of _____, California

Brief Legal Description Lot 83 of 18 Parcel Maps 8 & 9 RM 62



CORNER TYPE

Government Corner Control
Meander Property
Rancho Other
Date of Survey 1/26/06

COORDINATES (Optional)

N. _____
E. _____
Zone _____ NAD27 NAD83
NAD83 Epoch _____
Elev. _____
Vert. Datum: NGVD29 NAVD83
Meas. Units: Metric Imperial

Corner - Left as found Found and tagged Established Reestablished Rebuilt

Identification and type of corner found: Evidence used to identify or procedure used to establish or reestablish the corner:

See page 2 of 2

A description of the physical condition of the monument as found and as set or reset:

See page 2 of 2

SURVEYOR'S STATEMENT

This Corner Record was prepared by me or under my direction in conformance with the Land Surveyor's Act on 3/21/06

Signed [Signature] P.L.S or R.C.E. No. 6784

COUNTY SURVEYOR'S STATEMENT

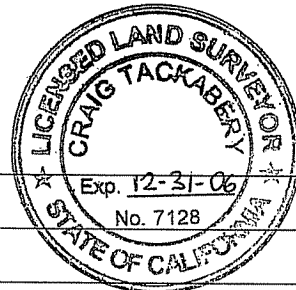
This Corner Record was received MARCH 23, 2006

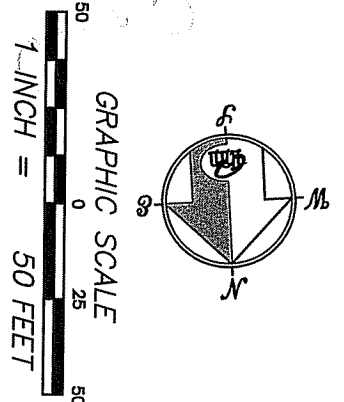
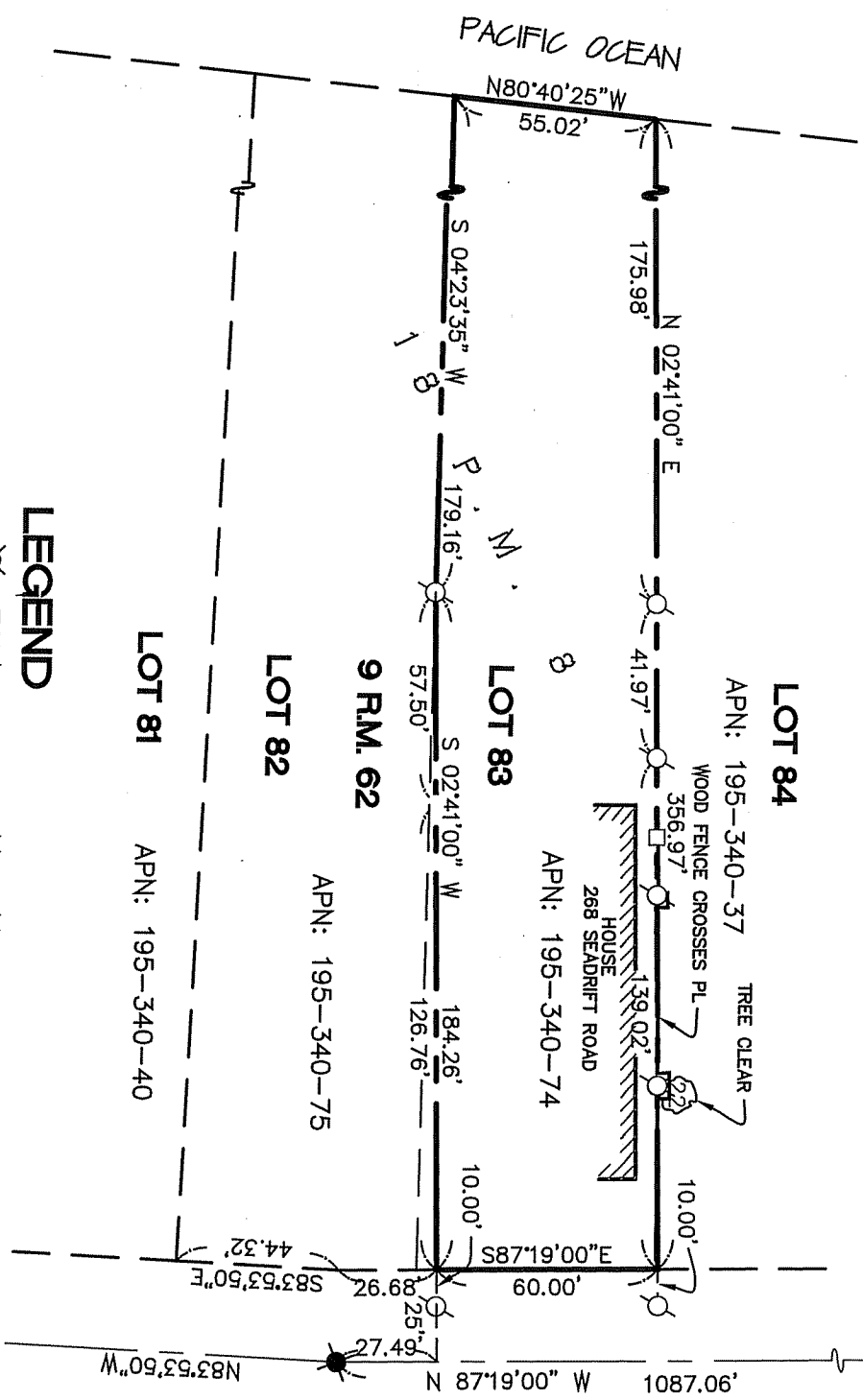
and examined and filed APRIL 5, 2006

Signed [Signature] P.L.S or R.C.E. No. 7128

Title COUNTY SURVEYOR

County Surveyor's Comment _____





LEGEND

- FOUND STREET MONUMENT
- SET 5/8" REBAR WITH CAP, PLS 6784
- SET BRASS NAIL AND TAG, PLS 6784 IN WOOD FENCE
- SET HUB, BRASS TACK & TAG, PLS 6784

NOTE
RECORD=MEASURED

REFERENCE
 "PARCEL MAP, LANDS OF SETRAKIAN..., STINSON BEACH, CALIFORNIA" FILED FOR RECORD 7 MAY 1980 IN BOOK 18 OF PARCEL MAPS, AT PAGE 8, MARIN COUNTY RECORDS.

CORNER RECORD

MERIDIAN SURVEYING ENGINEERING, INC.
 1812 UNION STREET
 SAN FRANCISCO, CA 94133
 (415) 440-4131
 info@meridiansurvey.com
 06004
 777 GRAND AVENUE, SUITE 202
 SAN RAFAEL, CA 94901
 (415) 456-5450