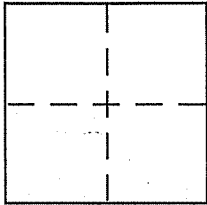


CORNER RECORD

Document Number 195-340-52
County of Marin, California

City of Stinson Beach

Brief Legal Description Lot 172, 11 Maps 51



CORNER TYPE

Government Corner Control
Meander Property
Rancho Other
Date of Survey June 29, 2006

COORDINATES (Optional)

N. _____
E. _____
Zone _____ NAD27 NAD83
NAD83 Epoch _____
Elev. _____
Vert. Datum: NGVD29 NAVD88
Meas. Units: Metric Imperial

Corner - Left as found Found and tagged Established Reestablished Rebuilt

Identification and type of corner found: Evidence used to identify or procedure used to establish or reestablish the corner:

See page 2 of 2

A description of the physical condition of the monument as found and as set or reset:

See page 2 of 2

SURVEYOR'S STATEMENT

This Corner Record was prepared by me or under my direction in conformance with the Land Surveyor's Act on 8/1/06

Signed [Signature] P.L.S or R.C.E. No. 6784

COUNTY SURVEYOR'S STATEMENT

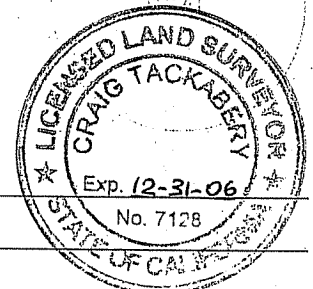
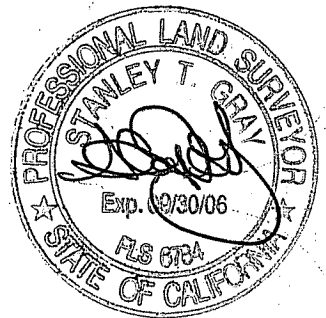
This Corner Record was received 8-25-06

and examined and filed 9-25-06

Signed [Signature] P.L.S or R.C.E. No. 7128

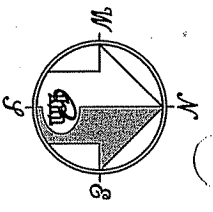
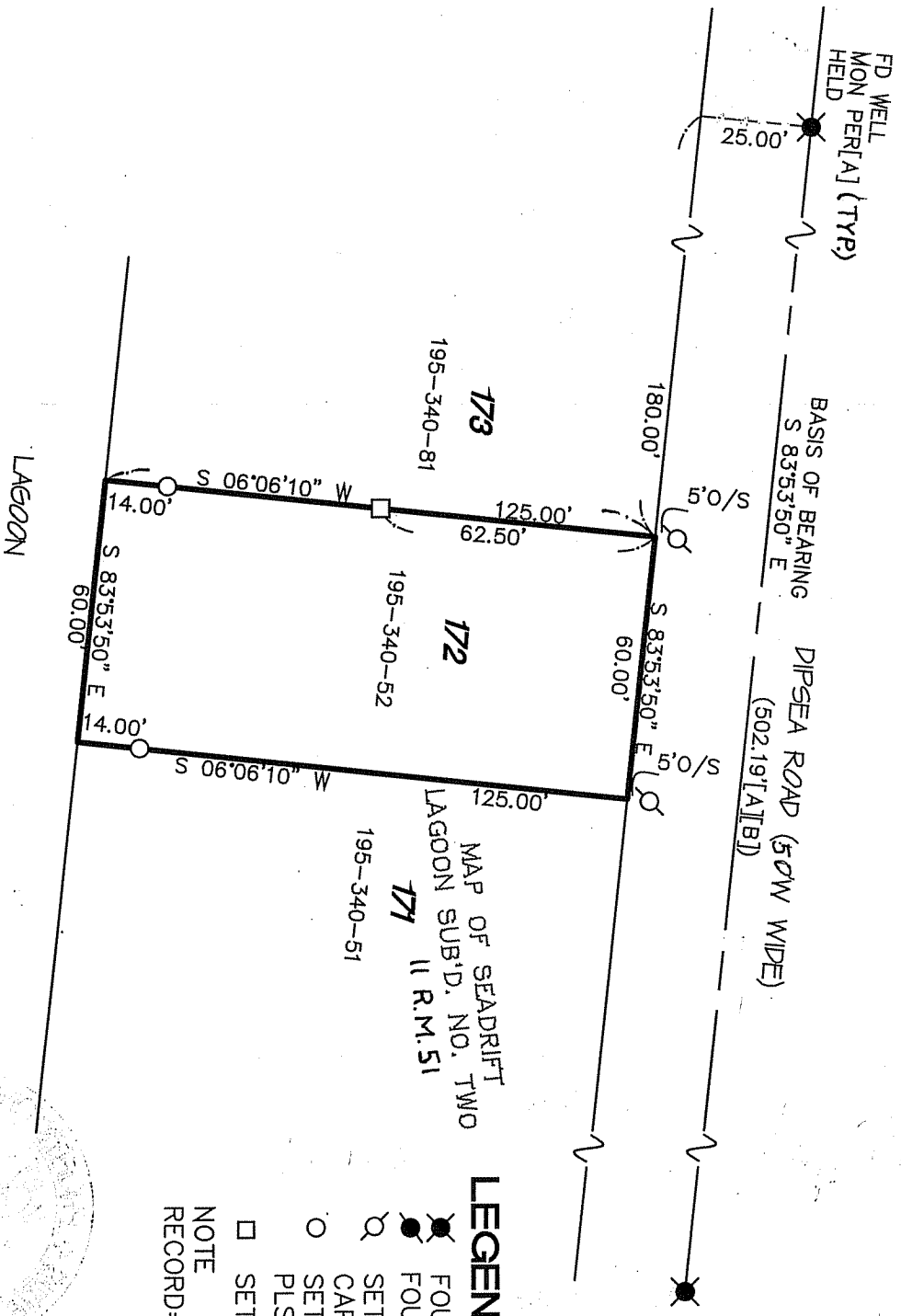
Title COUNTY SURVEYOR

County Surveyor's Comment _____



REFERENCE

[A] "MAP OF SEADRIFT LAGOON SUB'D. NO. TWO" FILED FOR RECORD 11 RM 51 MARIN COUNTY RECORDS.
 [B] RECORD OF SURVEY RECORDED 12/17/1986 IN BOOK 22 OF SURVEYS AT PAGE 33.



LEGEND

- FOUND AS NOTED
- FOUND AS NOTED
- SET 5/8" REBAR WITH CAP, PLS 6784
- SET NAIL AND BRASS TAG, PLS 6784
- SET HUB AND TACK

NOTE
 RECORD=MEASURED

CORNER RECORD



MERIDIAN SURVEYING ENGINEERING, INC.

1812 UNION STREET SAN FRANCISCO, CA 94123 (415) 440-4131
 777 GRAND AVENUE SUITE 202 SAN RAFAEL, CA 94901 (415) 456-5450

06089 info@meridiansurvey.com