

L. A. Stevens & Associates, Inc.  
Professional Land Surveyors  
Novato, California

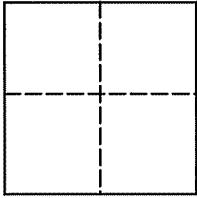
**Lands of Seefeld Trust, et. al.**  
**Job #: 11-1319**

**CORNER RECORD**

Document Number 195-340-44

Town of Stinson Beach, County of Marin, California

Brief Legal Description: Being Lot 77 of that certain map entitled "Map of Seadrift Subdivision No. 2", filed for record November 5, 1956 in Volume 9 of Maps at Page 92, Marin County Records.



**CORNER TYPE**

Government Corner  Control   
Meander  Property   
Rancho  Other   
Date of Survey March 22, 2011

**COORDINATES (Optional)**

N \_\_\_\_\_  
E \_\_\_\_\_  
Zone \_\_\_\_\_ NAD27  NAD83   
NAD 83 Epoch \_\_\_\_\_  
Elev. \_\_\_\_\_  
Vert. Datum: NGVD29  NAVD88   
Meas. Units: Metric  Imperial

Corner - Left as found  Found and tagged  Established  Reestablished  Rebuilt

Identification and type of corner found: Evidence used to identify or procedure used to establish or reestablish the corner:  
See Page 2 of 2

A description of the physical condition of the monument as found and as set or reset:  
See Page 2 of 2

**SURVEYOR'S STATEMENT**

This Corner Record was prepared by me or under my direction in conformance with  
The Land Surveyor's Act on March 24, 2010.

Signed [Signature] P.L.S. 6649



**COUNTY SURVEYOR'S STATEMENT**

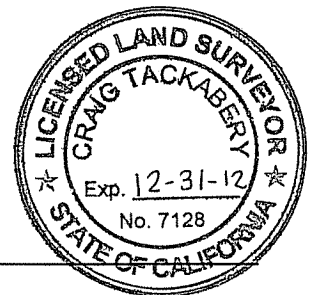
This Corner Record was received MARCH 31, 2011

and examined and filed APRIL 20, 2011

Signed [Signature] P.L.S. or R.G.E. No. 7128

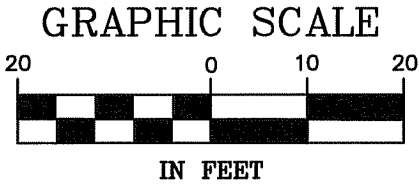
Title COUNTY SURVEYOR

County Surveyors' Comment \_\_\_\_\_

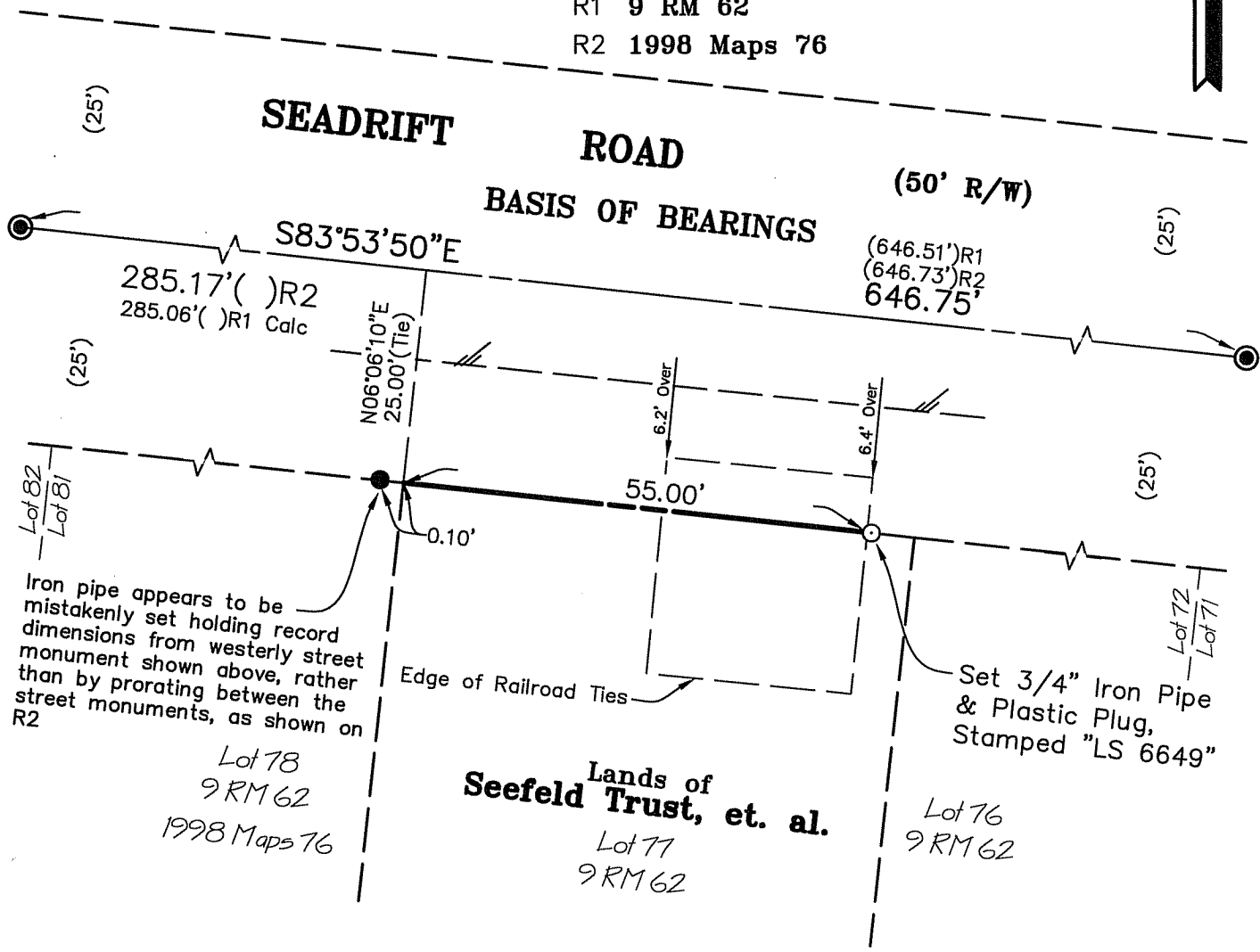


All distances shown are in feet and decimals thereof

# LEGEND



- ⊙ Found Pin In Concrete, In Hand hole, per R1
  - Found 3/4" Iron Pipe & Plastic Plug, Stamped "LS 4760", per R2
  - Edge of Asphalt Concrete Pavement
- R1 9 RM 62  
R2 1998 Maps 76



## Corner Record Lands of Seefeld Trust, et. al.

(Lot 77, 9 RM 62)

Stinson Beach Marin County California  
Scale: 1" = 20' March 2011

L.A. Stevens & Associates, Inc.

Professional Land Surveyors \* (415) 382-7713  
7 Commercial Blvd., Suite 1 \* Novato, CA 94949

Lawrence A. Stevens, PLS 6649

Job # 11-1319

Page 2 Of 2