

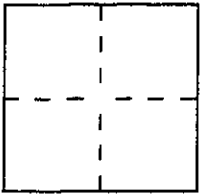
CORNER RECORD

Document Number A.P.# 195-340-40&75

City of STINSON BEACH

County of MARIN, California

Brief Legal Description NE CORNER 18 P.M. 8 & SE CORNER LOT 81 9 R.M. 62  
A.P. 195-340, 40 & 75



CORNER TYPE

Government Corner  Control   
Meander  Property   
Rancho  Other   
Date of Survey \_\_\_\_\_

COORDINATES  
(Optional)

N. \_\_\_\_\_  
E. \_\_\_\_\_  
Zone \_\_\_\_\_ Datum \_\_\_\_\_  
Elev. \_\_\_\_\_

Corner — Left as found  Found and tagged  Established  Reestablished  Rebuilt

Identification and type of corner found: Evidence used to identify or procedure used to establish or reestablish the corner:

THE CORNERS WERE REESTABLISHED FROM THE STREET  
MONUMENTS AS SHOWN ON "MAP OF SEADRIFT  
SUBDIVISION No. TWO" 9 RM 62

A description of the physical condition of the monument as found and as set or reset:

SET 1/2" DIAMETER REBARS & CAP P.L.S. 4694

SURVEYOR'S STATEMENT

This Corner Record was prepared by me or under my direction in conformance with  
the Land Surveyors' Act on APRIL 21 1998.

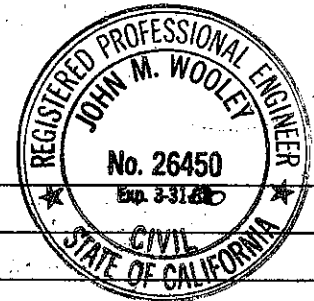
Signed Lawrence P. Doyle L.S. or R.C.E. Number P.L.S. 4694



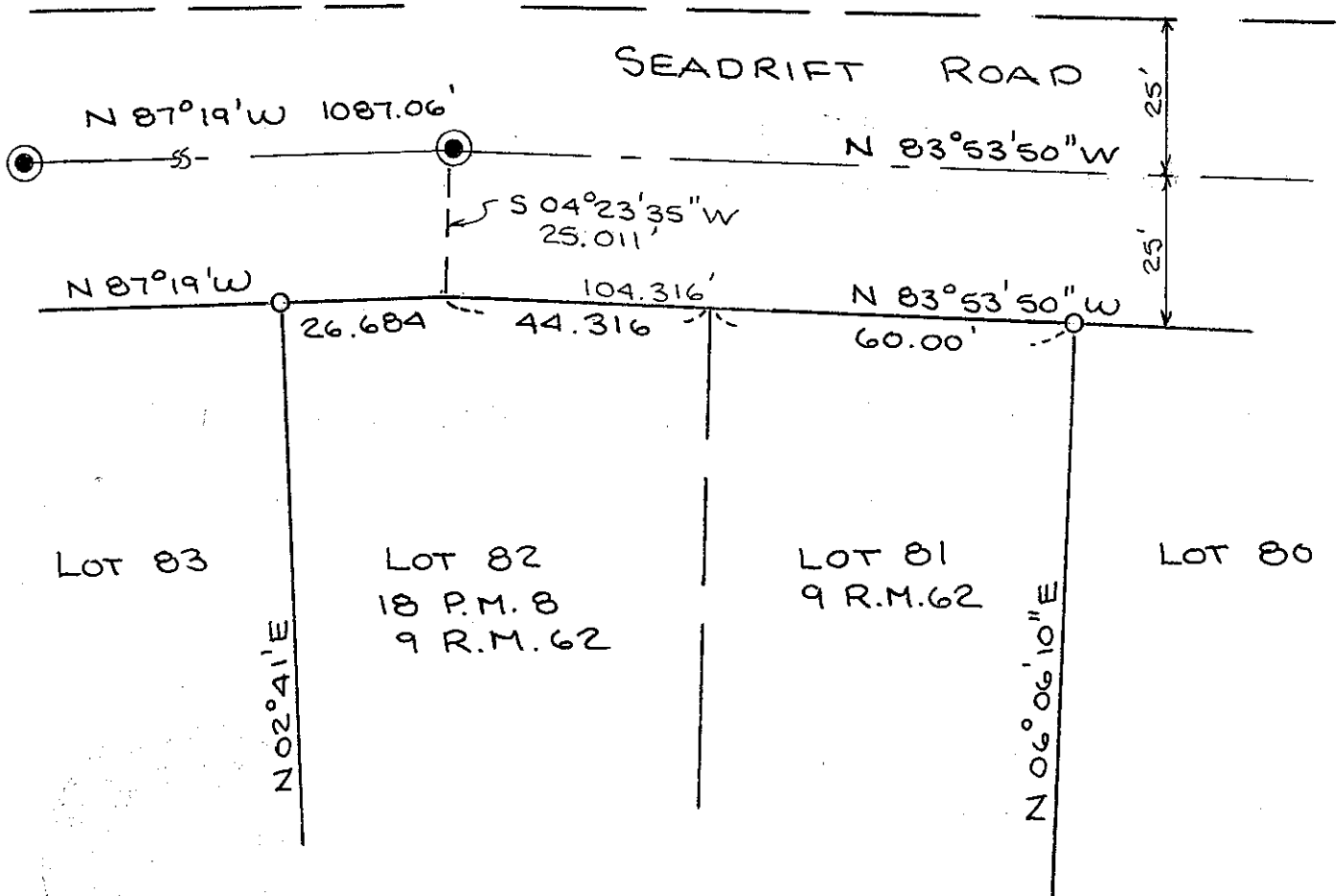
COUNTY SURVEYOR'S STATEMENT

This Corner Record was received JULY 21 1998 and examined  
and filed JULY 22 1998.

Signed John M. Wooley Title DEPUTY



County Surveyor's Comment \_\_\_\_\_



LEGEND

- ⊙ FOUND STREET MONUMENT
- SET 1/2" REBAR & CAP P.L.S. 4694

"BASIS OF BEARING"  
 N 87°19' WEST BETWEEN FOUND  
 MONUMENTS ON SEADRIFT ROAD AS  
 SHOWN ON 9 R M 62