

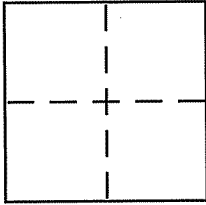
CORNER RECORD

Document Number 195-331-35

City of STINSON BEACH

County of MARIN, California

Brief Legal Description LOT 42 PER 10 MAPS 95, MCR



CORNER TYPE

Government Corner Control
Meander Property
Rancho Other
Date of Survey AUG 12, 2009

COORDINATES (Optional)

N. _____
E. _____
Zone _____ NAD27 NAD83
NAD83 Epoch _____
Elev. _____
Vert. Datum: NGVD29 NAVD88
Meas. Units: Metric Imperial

Corner - Left as found Found and tagged Established Reestablished Rebuilt

Identification and type of corner found: Evidence used to identify or procedure used to establish or reestablish the corner:

SEE PAGE 2

A description of the physical condition of the monument as found and as set or reset:

SEE PAGE 2

SURVEYOR'S STATEMENT

This Corner Record was prepared by me or under my direction in conformance with the Land Surveyor's Act on AUGUST 18 2009

Signed [Signature] P.L.S. or R.C.E. No. 7950



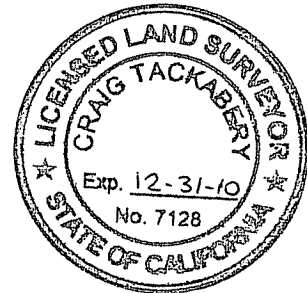
COUNTY SURVEYOR'S STATEMENT

This Corner Record was received AUGUST 21, 2009

and examined and filed SEPTEMBER 9, 2009

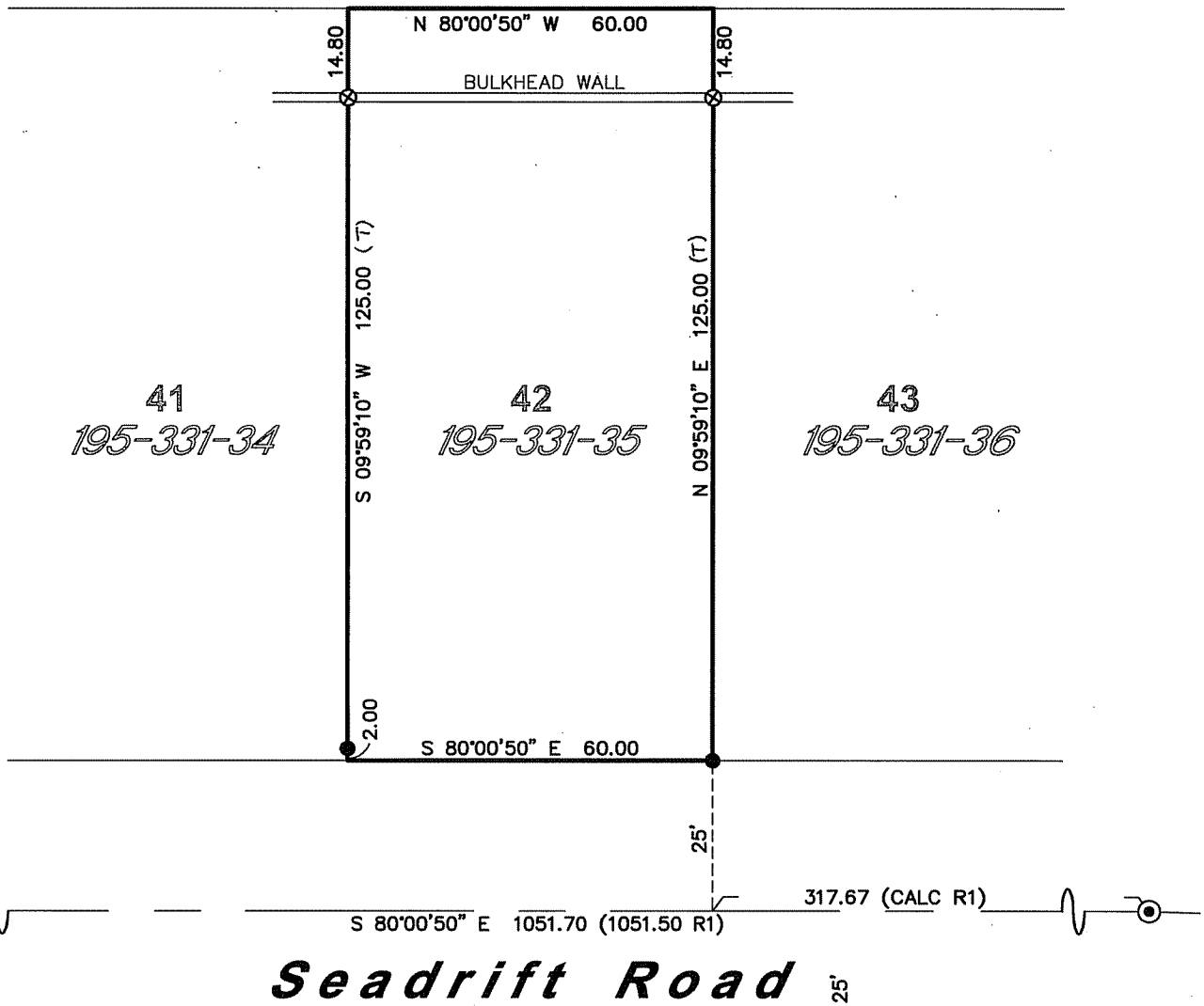
Signed [Signature] P.L.S. or R.C.E. No. 7128

Title COUNTY SURVEYOR



County Surveyor's Comment _____

Seadrift Lagoon



LEGEND

- SET 3/4" INCH IRON PIPE, TAGGED
PLS 7950
- ⊗ SET BRASS NAIL & TAG, PLS 7950
- ⊙ FOUND STANDARD MONUMENT WELL
WITH CONCRETE MONUMENT AND 1/8"
IRON PIN, NO TAG
- R1 SEADRIFT LAGOON SUB. NO. ONE, 10
MAPS, 95, MARIN COUNTY RECORDS
- (T) TOTAL


STEVEN J. LAFRANCHI & ASSOCIATES, INC.
CIVIL ENGINEERS - LAND SURVEYORS - LAND PLANNERS
 PETALUMA MARINA BUSINESS CENTER
 775 BAYWOOD DRIVE, SUITE 312
 PETALUMA, CALIFORNIA 94954
 707-762-3122 FAX 707-762-3239

NORTH
 SCALE: 1" = 30'