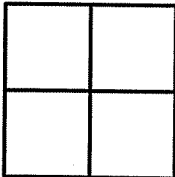


CORNER RECORD

Document Number APN: 195-331-21

City of STINSON BEACH County of Marin State of California.

Brief Legal Description: LOT 72 - Subdivision Map of Sea Drift Subd. No. Two, 9 R.M. 62



CORNER TYPE:

Government Corner Control
Meander Property
Rancho Other
Date of Survey _____

COORDINATES:

[Optional]
N> _____
E> _____
Zone _____ Datum _____
Elev> _____

CORNER: ----- Left as found Found & Tagged Established Reestablished Rebuilt

Identification & Type of Corner Found: Evidence used to identify or procedure used to establish or reestablish the corner:

FOUND MONUMENTS PER OFFICIAL RECORD MAP. - 9 R.M. 62

A description of the physical condition of the monument as found and as set or reset:
Original corners not found: Set points as shown on reverse.



SURVEYOR'S STATEMENT:

The corner record was prepared by me or under my direction in conformance with the Land Surveyors' Act on JUNE 2006 2006 _____

Signed : Douglas J. Matteson RCE# 18200

COUNTY SURVEYORS STATEMENT:

This corner record was received: JUNE 13, 2006
and filed JULY 18, 2006

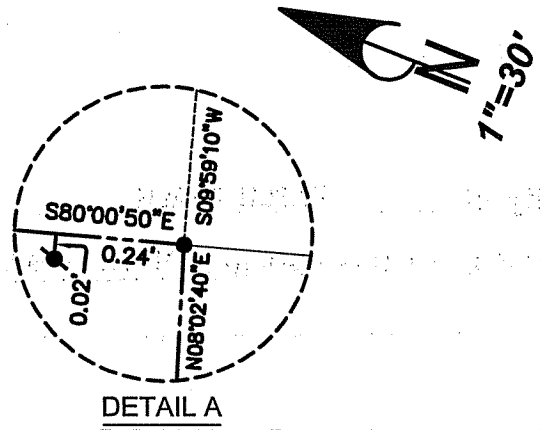
Signed _____ Title: COUNTY SURVEYOR



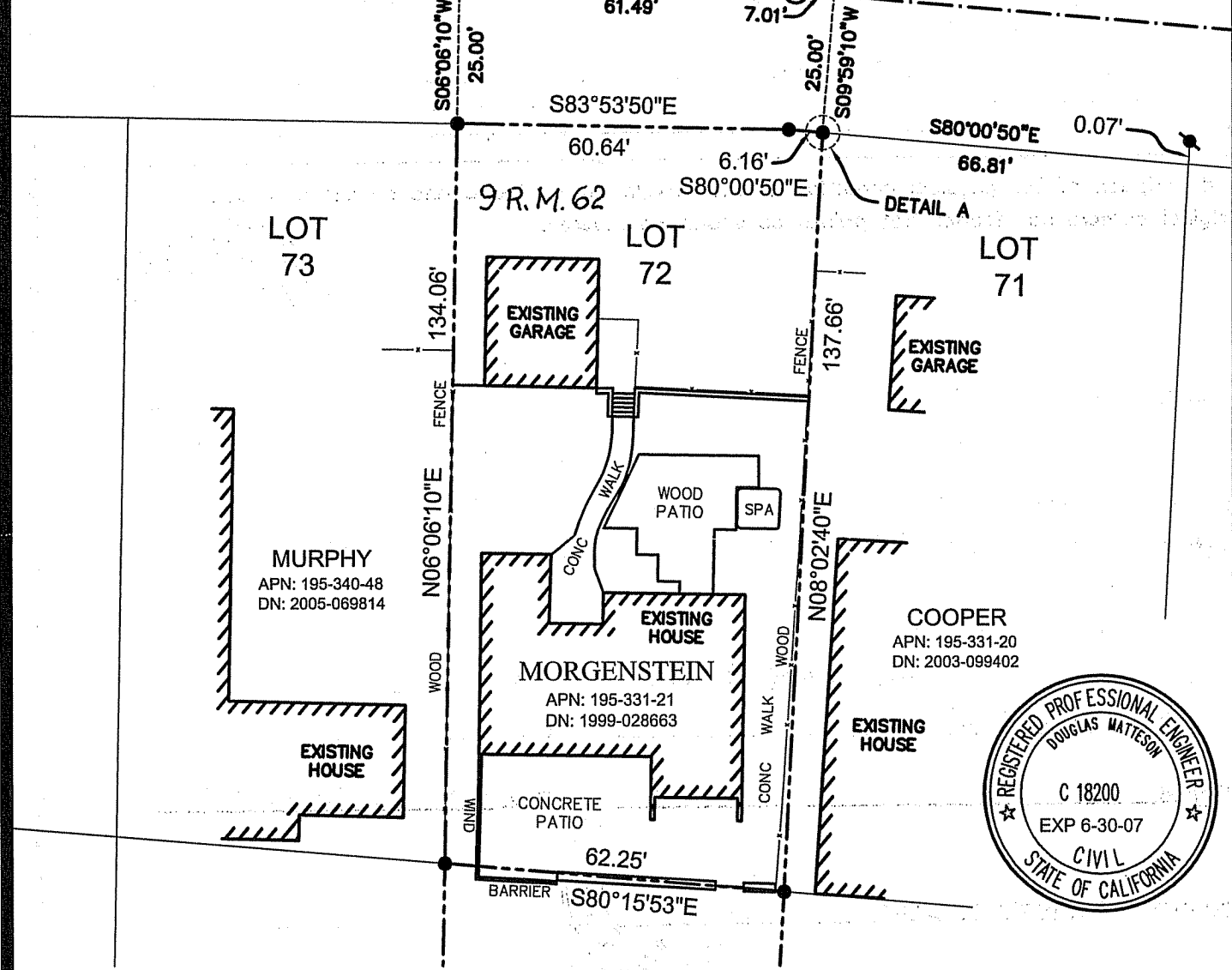
COUNTY SURVEYOR'S COMMENT _____

LEGEND

- ⊙ FOUND NAIL IN CONCRETE PER 9 R.M. 62, U.N.O.
- SET REBAR AND PLASTIC CAP R.C.E. 18200, U.N.O.
- ⊙ FOUND 1/2" IRON PIPE NAIL & TAG, L.S. 3835, U.N.O.
- U.N.O. UNLESS NOTED OTHERWISE
- SUBJECT PROPERTY LINES
- - - - EXTENSION LINE
- (M) MEASURED
- (R) RECORDED



SEADRIFT ROAD
 BASIS OF BEARING
 S83°53'50"E 646.51'(R) 646.66'(M)



MURPHY
 APN: 195-340-48
 DN: 2005-069814

MORGENSTEIN
 APN: 195-331-21
 DN: 1999-028663

COOPER
 APN: 195-331-20
 DN: 2003-099402



MATTESON ENGINEERING AND SURVEYING
 SUITE 210A 200 GATE FIVE SAUSALITO ,CA

APN: 195-331-21